

Reclaiming the New Westminster Waterfront

Peter Hall, Simon Fraser University,
Vancouver, B.C.

This research was supported by the Social Sciences and Humanities Research Council.



Social Sciences and Humanities
Research Council of Canada

Conseil de recherches en
sciences humaines du Canada

Canada 

Outline

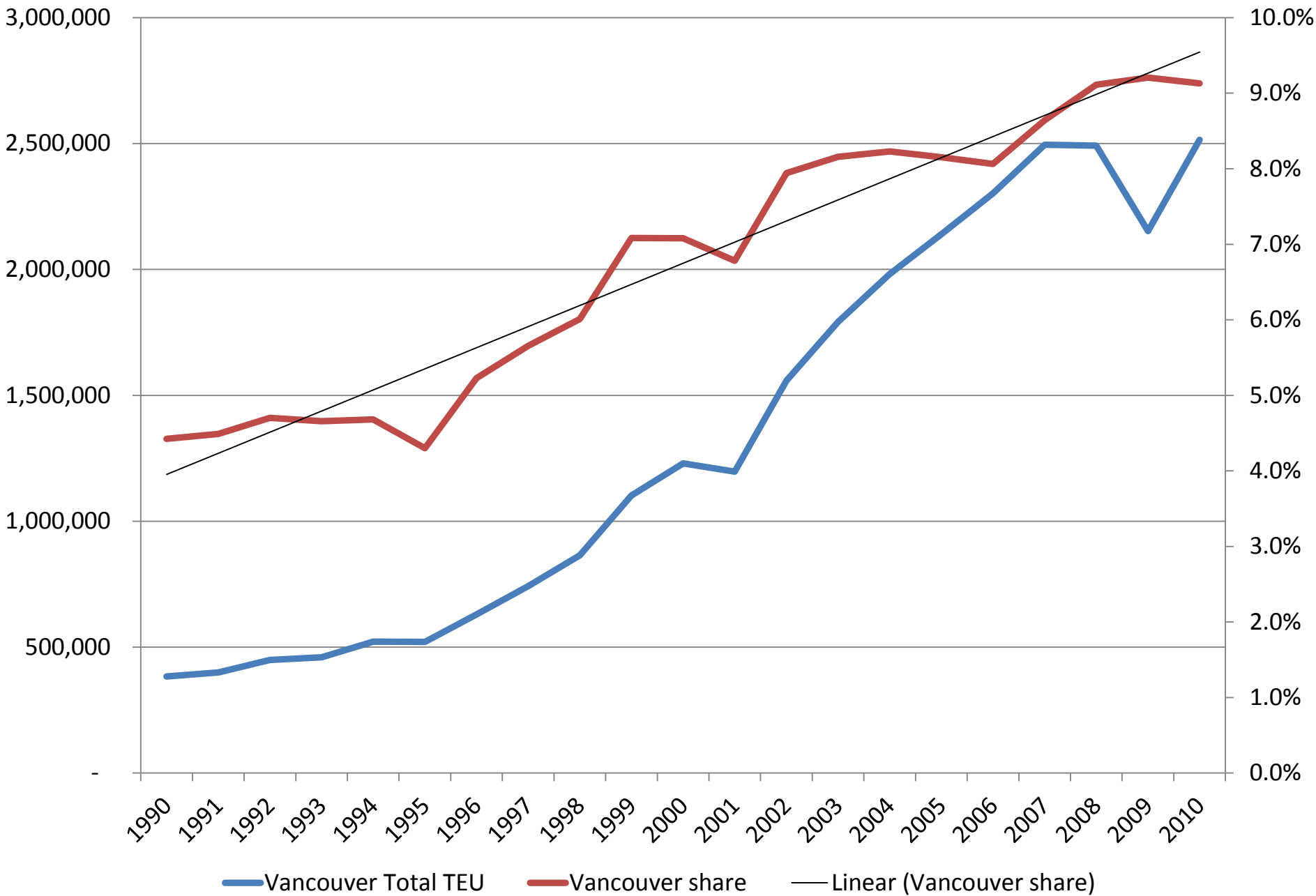
- Port-cities and the problem of waterfront work
- New Westminster
- Reclaiming work on the waterfront



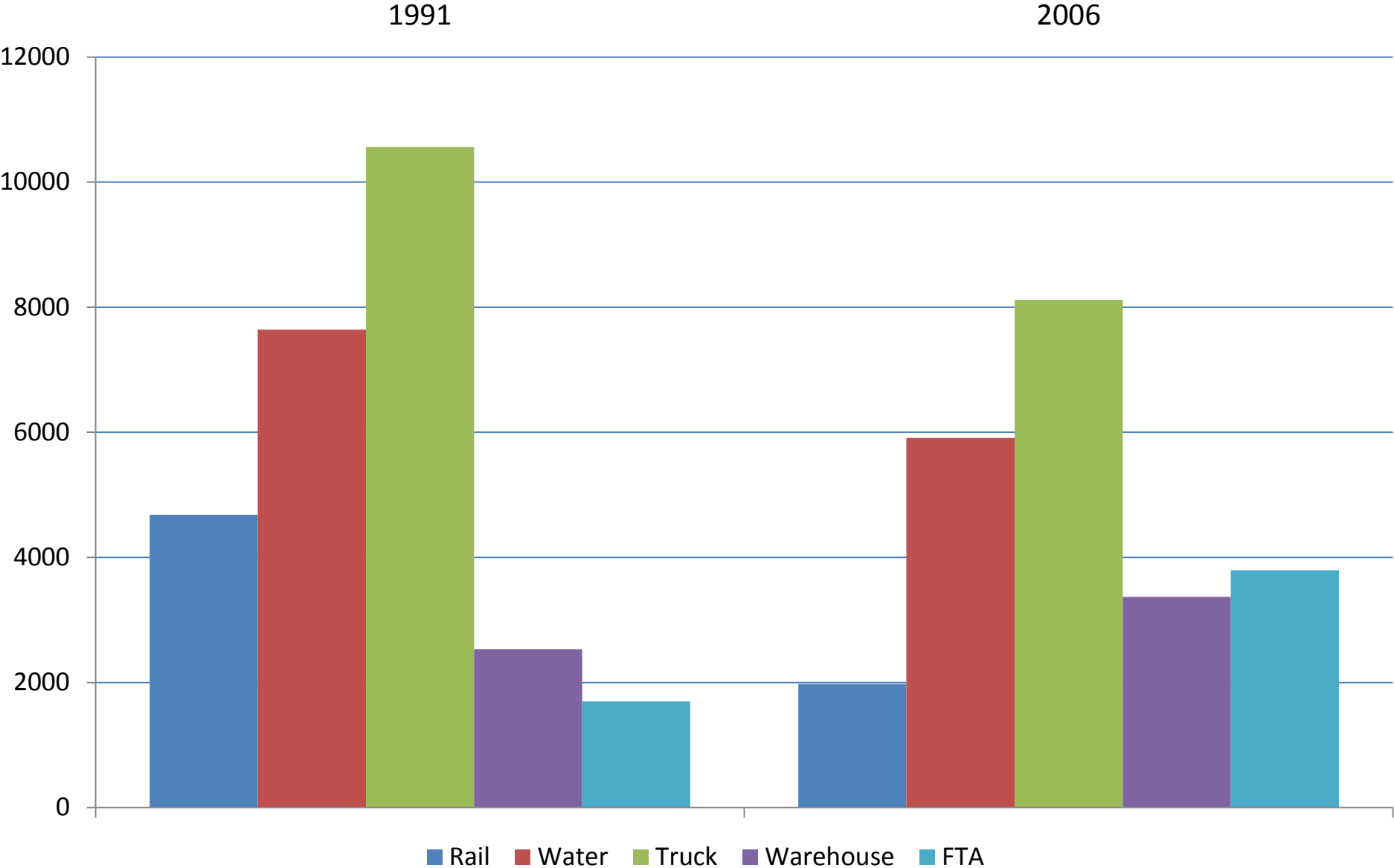


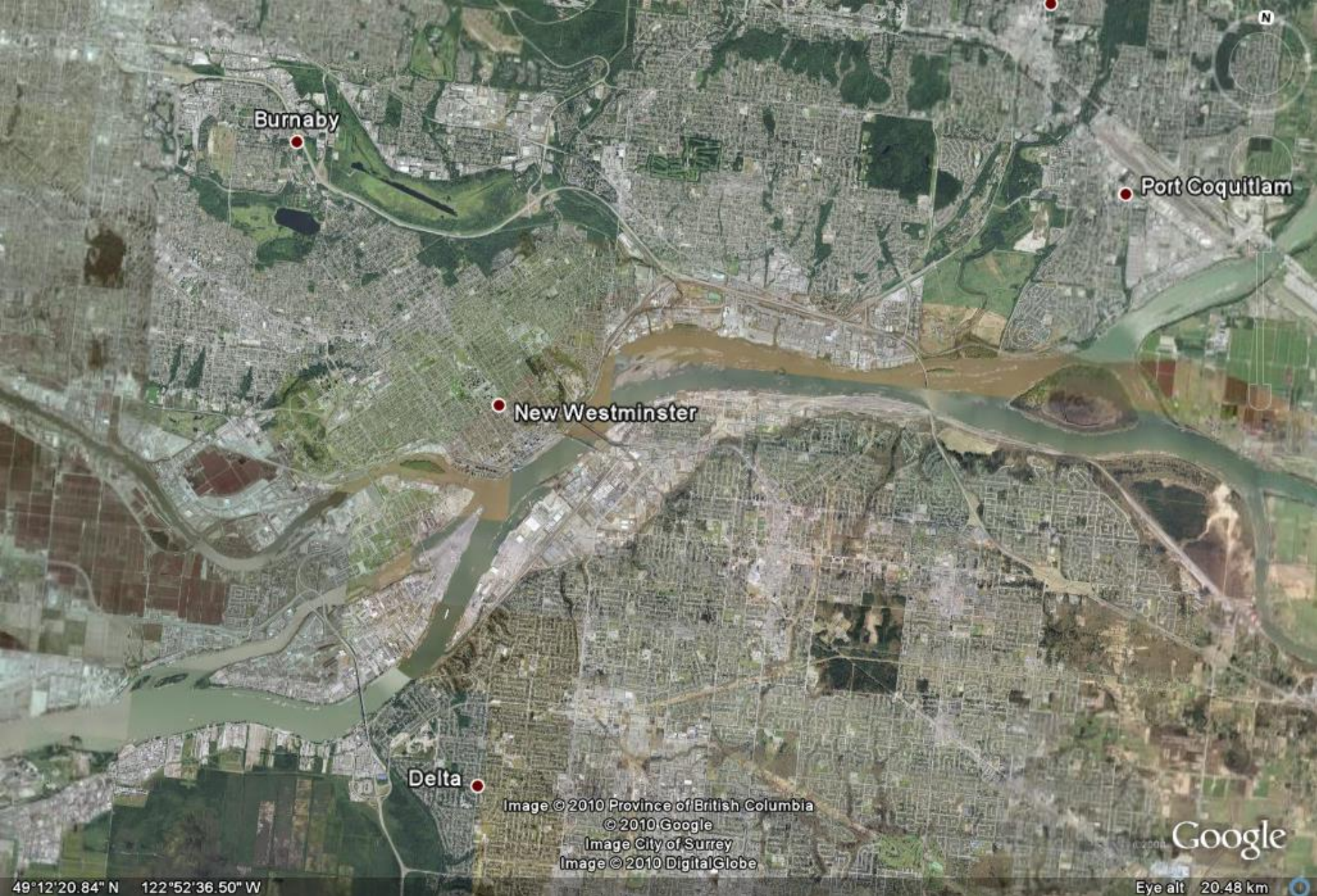


Vancouver ports' 20 year container growth



Port-logistics employment in Metro Vancouver declined slightly and changed a lot between 1991 and 2006





New Westminster portion of Fraser River, British Columbia, Canada

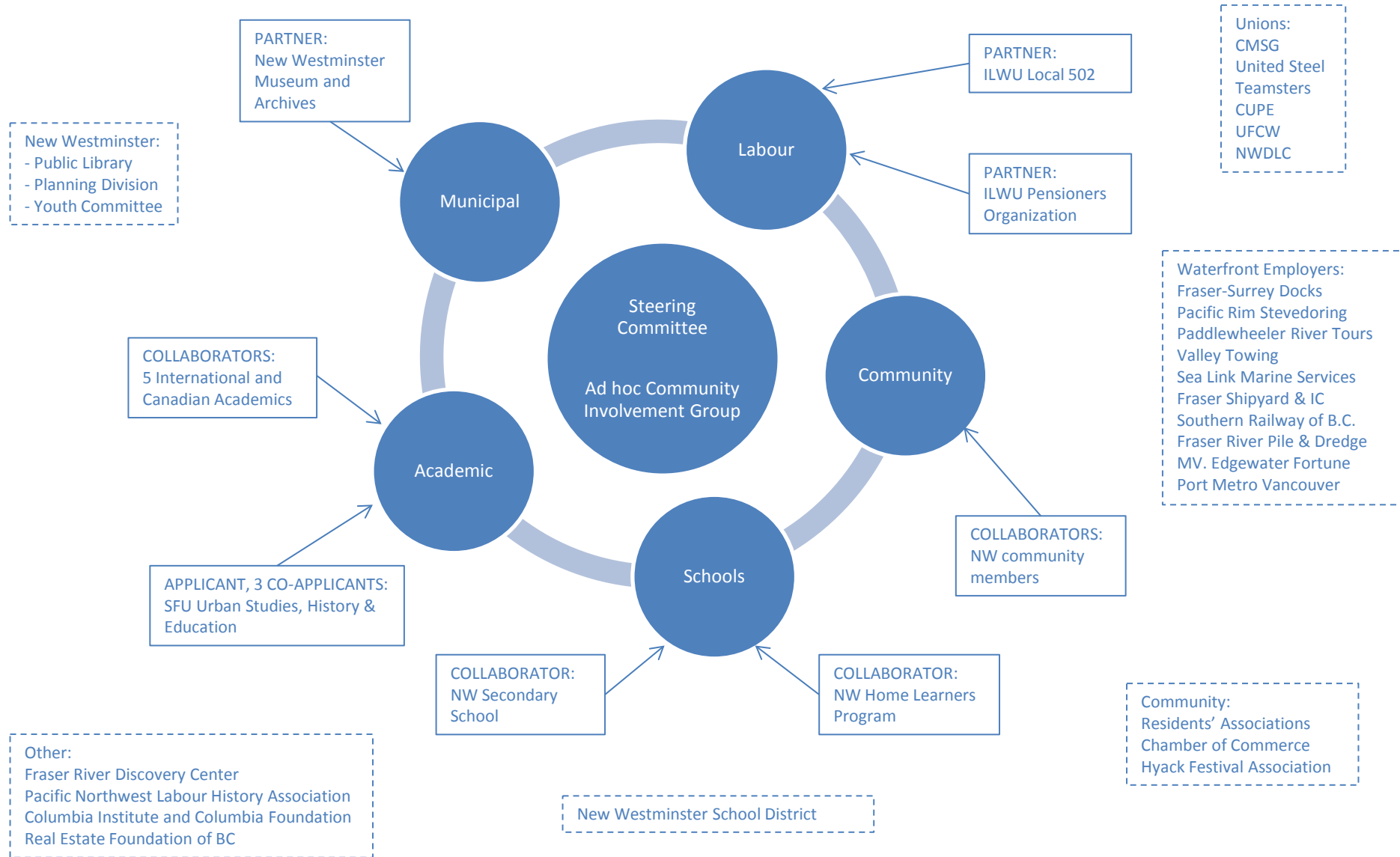








Reclaiming the New Westminster Waterfront PDG Structure: Current and Potential Future Partners/Contributors



Activities

- Year 1 (2012-13):
 - Website
 - Mapping the working waterfront
 - Oral history training and initial collection
 - Pilot projects in schools
- Year 2 (2013-14):
 - Documenting local perspectives
 - Oral history collection and analysis
 - Curriculum development and testing
 - Public lectures by Canadian and International academics
- Year 3 (2014-15):
 - Archiving
 - Museum exhibit and programming
 - Workshop, planning for future



SFU SIMON FRASER UNIVERSITY ENGAGING THE WORLD

SFU.CA Burnaby | Surrey | Vancouver

SFU Online | A-Z Links | Search sfu.ca

- Home
- Partners
- Documents
- Pilot in the Schools
- Contact and How to Get Involved
- FAQs
- Links
- User Area

(Re)Claiming the New Westminster Waterfront



In the past half-century, port cities all over the world have discovered that their once-industrial waterfronts are now attractive sites for recreation, commercial and residential development. Today, when we speak about the urban waterfront, most of us envision an aesthetically pleasing place of consumption rather than a place of work. But our new, urban waterfronts are still places of work – not necessarily the same kinds of work that was done in the past, but work nonetheless.

(Re)Claiming the New Westminster Waterfront, brings together a diverse set of community and Simon Fraser University partners to collect and share the stories of the people who worked on the waterfront in New Westminster. The Community Partners include the [New Westminster Museum and Archives](#), the [International Longshore and Warehouse Union Canada - Pensioners' Organization](#) and [Local 502](#), as well as individuals from the local schools and the community.

Our understanding of history is incomplete without the experiences and perspectives of ordinary, working people. Too often ordinary citizens mistakenly feel that they have nothing special to contribute to our understanding of the past. Thus, community and SFU researchers are collecting the stories of workers on the New Westminster waterfront, with a special focus on the men and women who worked on the river and waterfront from the end of World War II till today. This period has been one of intense innovation in the transportation and other industries, and it is critical to capture the memories of workers who were part of it.









WESTMINSTER PRIDE VANCOUVER BC

K de K
VANCOUVER BC



<http://www.sfu.ca/waterfront.html>

Thank you!

This research was supported by the Social Sciences and Humanities Research Council.



Social Sciences and Humanities
Research Council of Canada

Conseil de recherches en
sciences humaines du Canada

Canada 