

# Foss Waterway Seaport

Maritime Heritage, Education and Recreation Center



The Waterfront Gathering Place  
for Our Community

Contemporary Photos/ Jan  
Adams

# Foss Waterway Seaport

*The mission of the Foss Waterway Seaport is to celebrate Tacoma's rich maritime heritage—past, present, and future.*



# Foss Waterway Seaport

*The mission of the Foss Waterway Seaport is to celebrate Tacoma's rich maritime heritage—past, present, and future.*



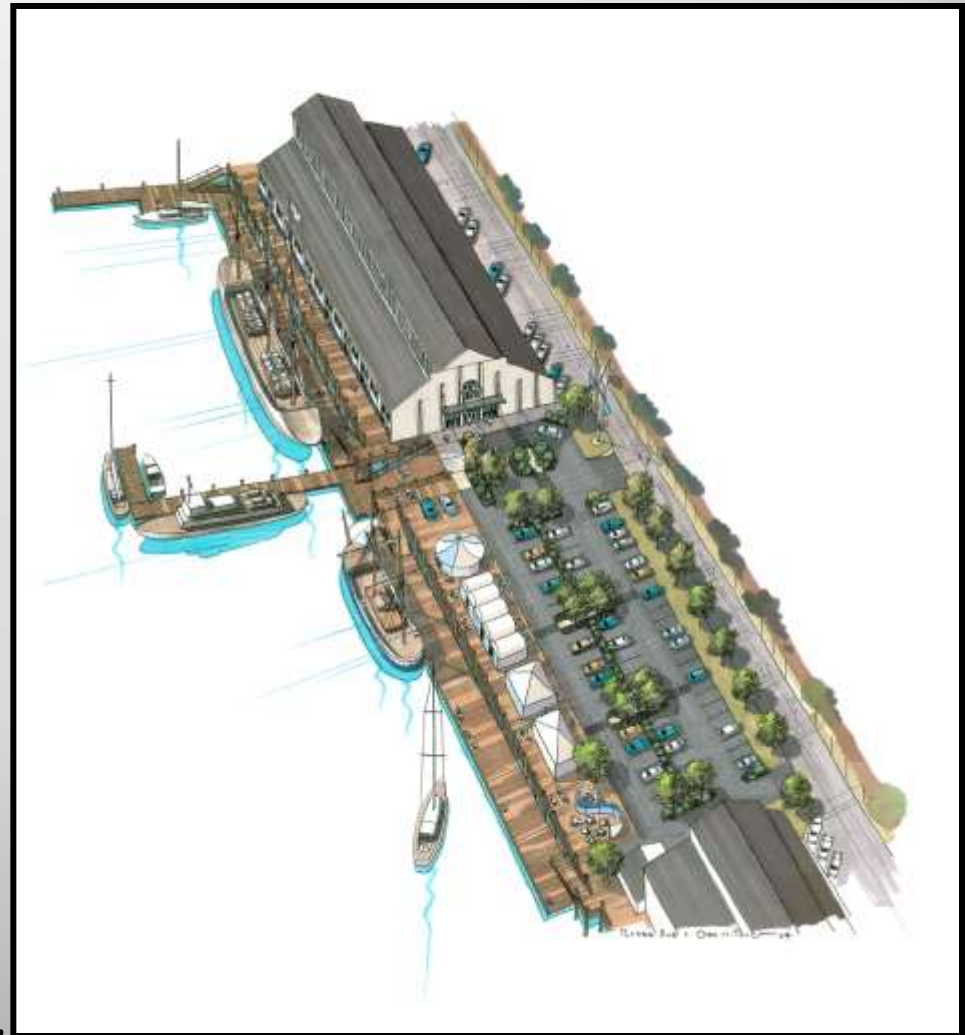
# Foss Waterway Seaport

More than just another museum!

Three Project Components:

- **Restores** historic 45,000 square-foot publically-owned Balfour Dock building
- **Redevelops** waterfront esplanade and adjacent open space
- **Reestablishes** Tacoma's access and use of the Thea Foss Waterway

The Seaport project fulfills the City's Shoreline Master Plan to provide public access to on-water activities from the downtown core.



# Building a Lasting Legacy

By Preserving and Revitalizing an historic building



Rehabilitate 113 year old Building  
for another century of service

# Building a Lasting Legacy

By Preserving and Revitalizing an historic building



Provide education programs for all ages

Marine and Environmental Science Learning Center

Adult Boating Education Programs

Children's Learning Center

Waterfront Meeting, Seminar and Events Venue

# Building a Lasting Legacy

By Preserving and Revitalizing an historic building



On-water activities

On the water education

Events & festivals

Guest Moorage

# Building a Lasting Legacy



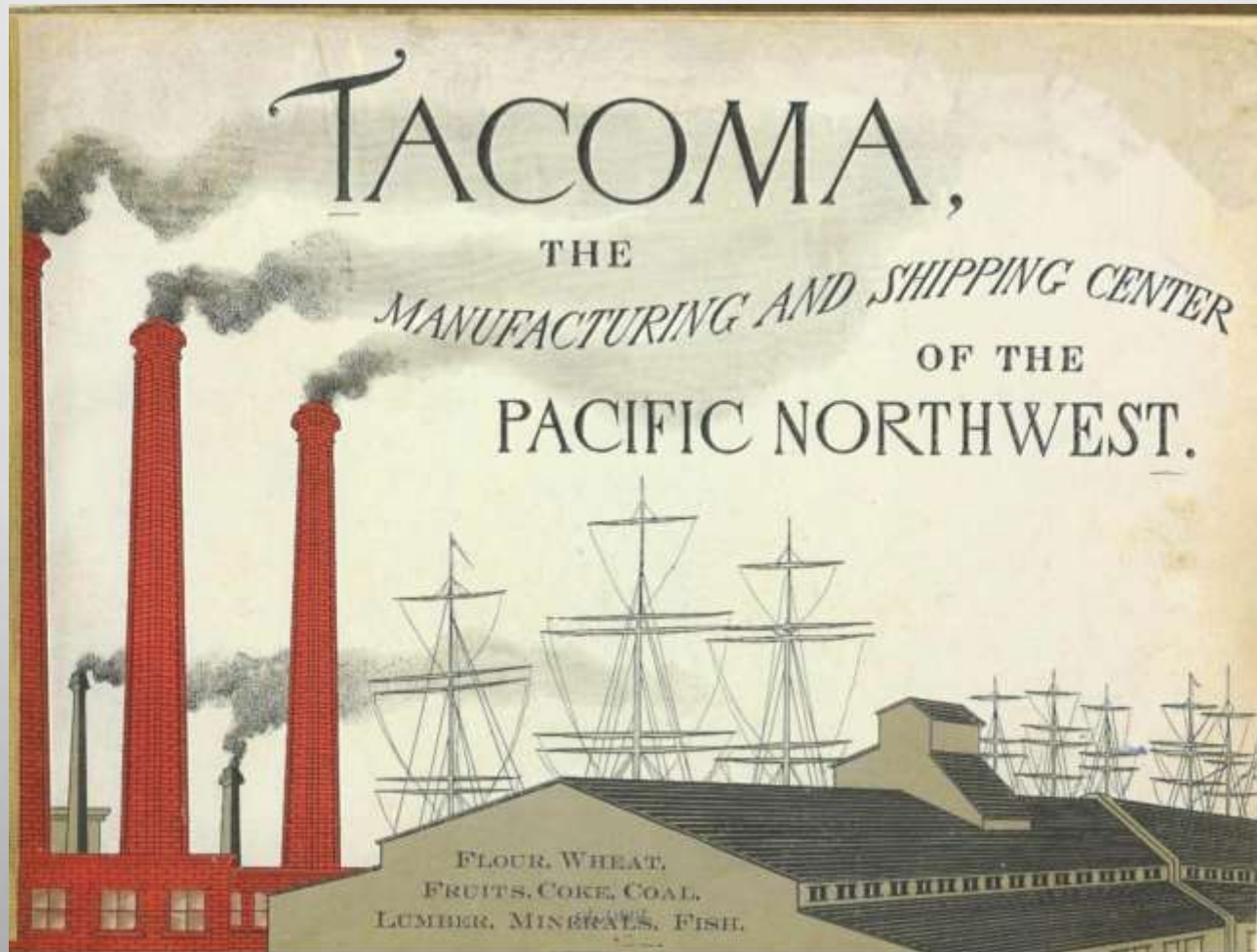
Goal of the redevelopment effort: to preserve the essential story elements of the historic building and revitalize the structure for another century of service to the region.



# Building a Lasting Legacy

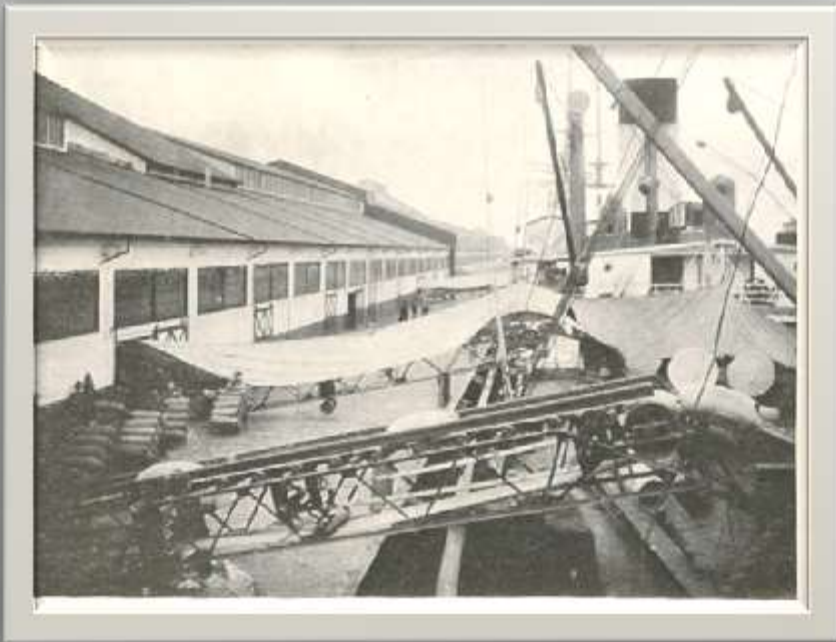


# Building a Lasting Legacy



# Building a Lasting Legacy

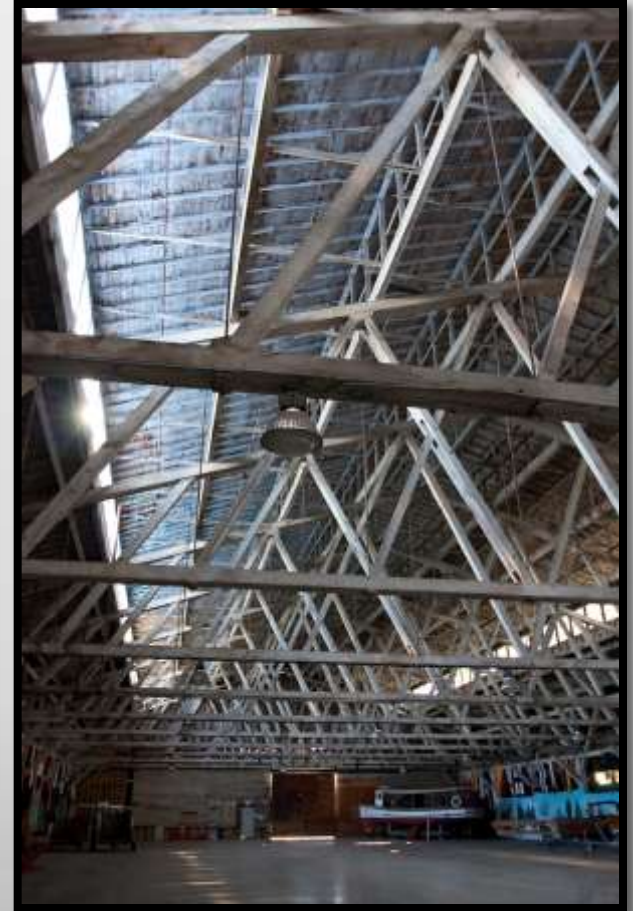
Other warehouse  
wharf images from the  
early years



# Heritage Highlights of the Balfour Dock Building Today



Howe Bridge Truss  
Construction



# Inside the Building--Museum

The Seaport's expanded Working Waterfront Maritime Museum featuring hands-on, interactive living history exhibits

Mixing Core Exhibits with contemporary interpretation

Lumber and early industries

Labor History

Trade, Trade Vessels & the

Port of Tacoma

Foss Family Story

Wheat Trade

Fishing

Mosquito Fleet

The Waterfront Experience

Native Cultures

Rails to Sails story

Recreational boat building

Fishing History

Ship building

The Fabulous Willits Canoes

Ethnic histories of the Waterfront

Oral Histories of Work on the Water

Maintaining a maritime research library with archival materials

# Native Canoe Carving and Maritime Arts



# Inside the Building

Heritage boat shop celebrating traditional maritime crafts and craft construction skills

Expanding our traditional wooden boat building shop

Building our livery fleet



# Education & Research



“Science on the Sea”  
environmental and marine  
ecology education center

with

Extensive education  
partnerships





# Implementing the Project

## Givens:

- 45,000 sf public owned building on the historic register
- Broad community desire to save the building (somehow)
- A Building with great physical challenges – 1/3 over water
- An initially minimally funded tenant
- Equally broad community belief that we were nuts

# Implementing the Project



Required a Public- Private Partnership

Between the 501.c3  
Foss Waterway Seaport Board of Directors  
&

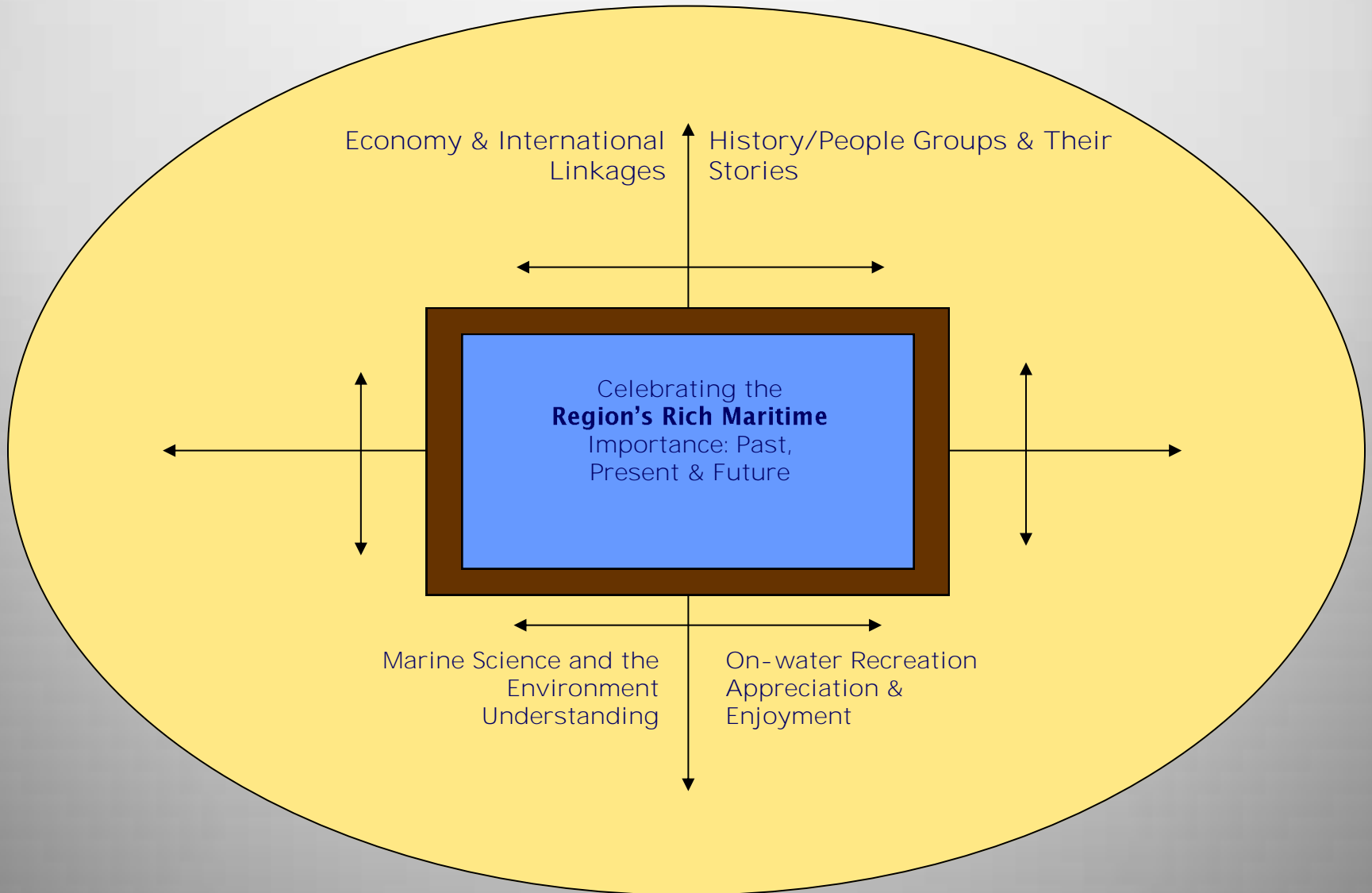
The Foss Waterway Development Authority

Projected \$25.5 million Tacoma waterfront redevelopment project will create US west coast's largest, most comprehensive maritime heritage education, recreation, and tourist destination

# Implementing the Project

- Publicly-Owned Venue  
FWDA/City-owned building
- Foss Waterway Development Authority Role  
“Horizontal” & Macro Redevelopment
- Seaport’s Role  
“Vertical & Programming – related TI’s
- MOU & Phased Lease agreements

# Defining the Vision: Education & Community Service Mandate Compass



# Foss Waterway Seaport Today and Tomorrow



# Public & Private Fundraising

Reverse Challenge Match

Reflected extraordinary dedication of  
our board

Public Sector Partners

State & Federal Support

Pilings for later moorage

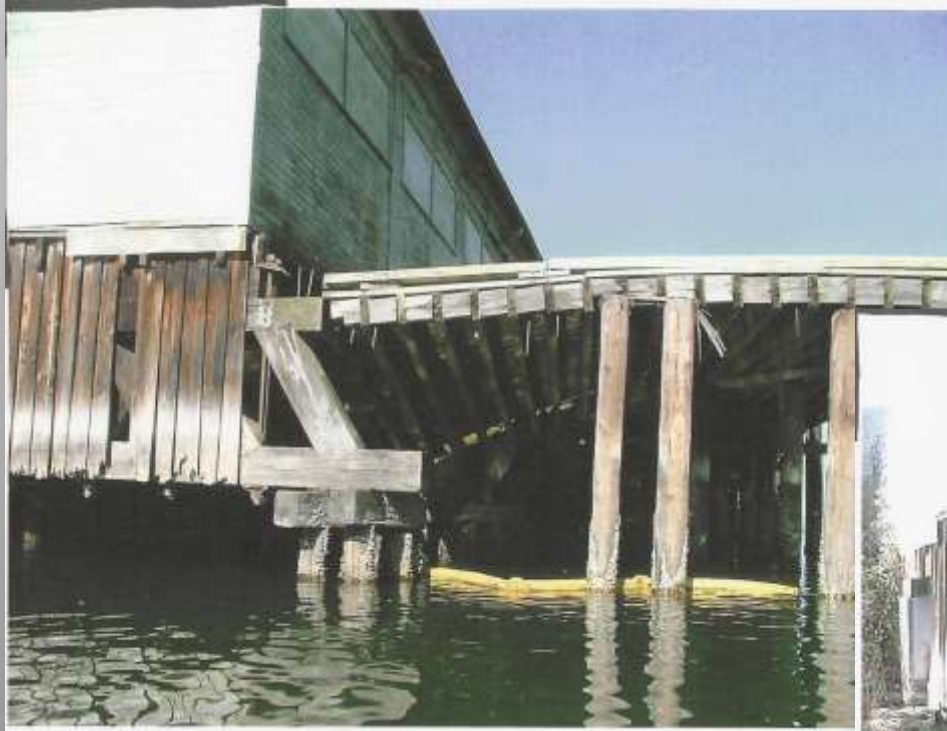
Building

Esplanade

# The Beginning



# How Far We've Come





# How Far We've Come



# How Far We've Come

Phase 1 – September 2007 – May 2008



Wharf Replacement

# How Far We've Come

## Windows Repair



Temporary placement after removal



Reinstallation of original windows



# How Far We've Come

Completed Roof and Windows West Side



Presenting  
performing  
arts in an  
interactive  
theatre space



Hosting art  
shows

# Open Space & On-Water Activities

## Events

- Annual Classic Boat/  
Classic Car Show
- Tall Ships
- Character Vessel Visits



# Major Festivals



# Today and Tomorrow

## Outside the Building





# How Far We've Come

Completed Front Entry Curtain Wall



# Foss Waterway Seaport



Future Function Space

# Foss Waterway Seaport



Future Entry Space

# Foss Waterway Seaport



Future Events and Function Space

# Foss Waterway Seaport



Future Exhibit Space