



From the Outside Looking in: Applying Oral Histories to Fisheries Research in California

Melissa M Stevens

Working Waterfronts Symposium 2013

Melissa_stevens@tnc.org

Agenda

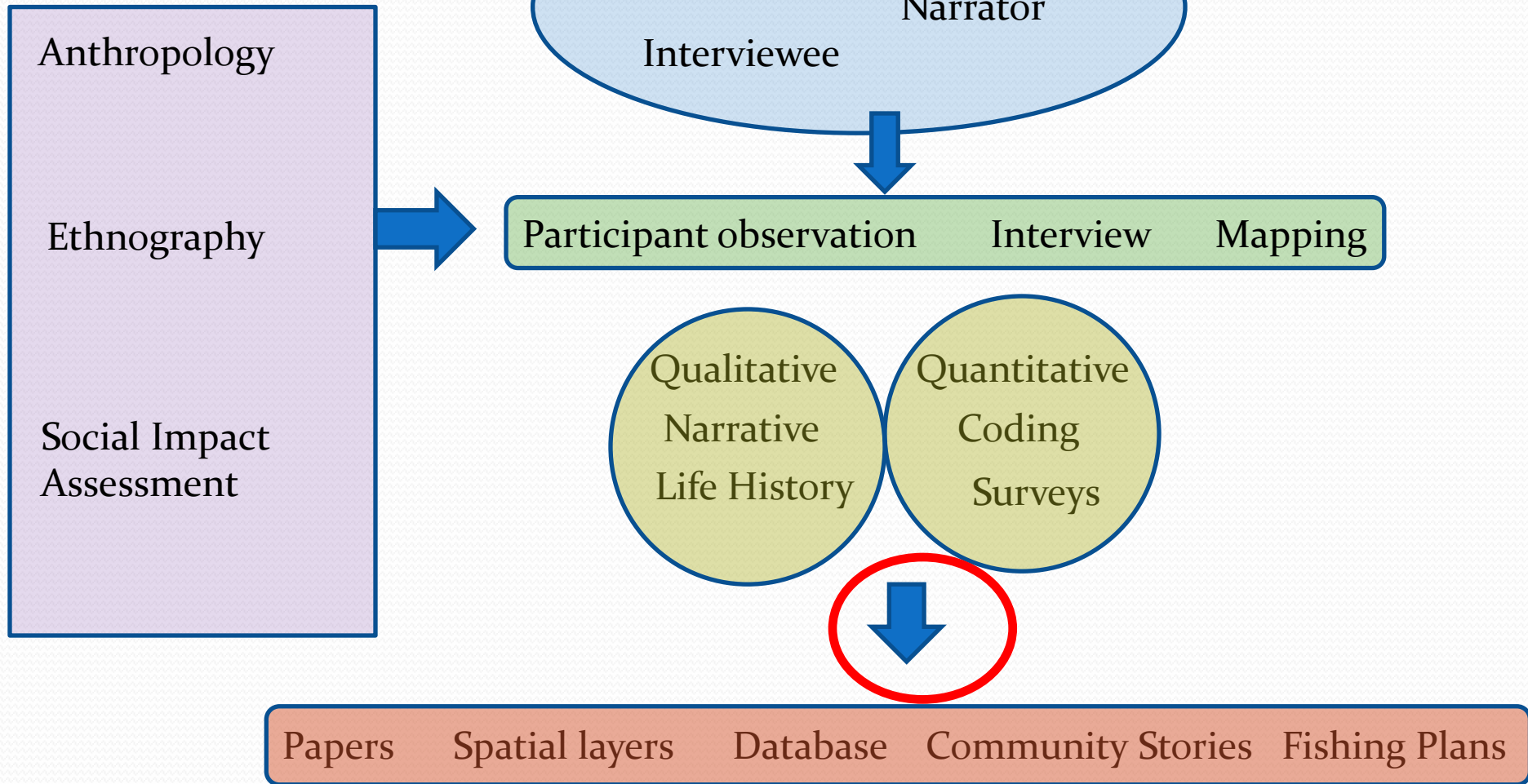
- ❖ Terminology
- ❖ Methods
- ❖ Project examples & applications
- ❖ Conclusions

Unpacking 'Oral History'

- ❖ The use of oral sources in history or the social sciences (Portelli)
- ❖ Co-created with the interviewer
- ❖ A listening art form
- ❖ Relationships



Methods



Project: North Coast Fishing Community Profiles

California's North Coast
Fishing Communities
Historical Perspective and Recent Trends



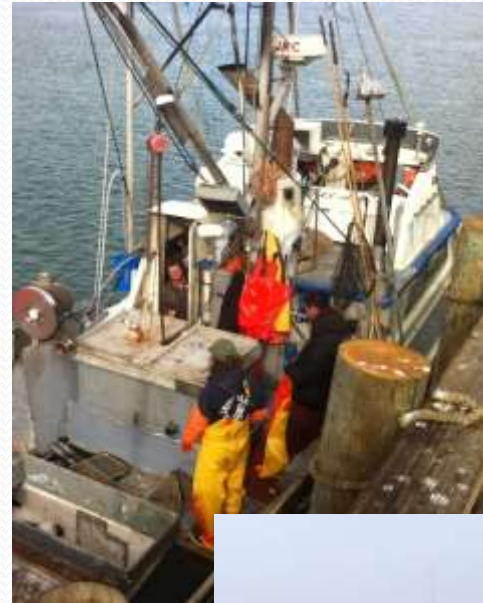
<http://ca-sgep.ucsd.edu/pomeroy/fcp>

Project: NOAA Catch Shares Social Study

Pacific Coast Groundfish Fishery
Social Survey
Post Catch Shares
2012 Version



Sponsored by:
NOAA Fisheries (National Marine Fisheries Service)
Northwest Fisheries Science Center
Human Dimensions Program



Project: NOAA Catch Shares Social Study

Section D: Catch Shares Perspectives

Questions in this section will help us understand people's opinions about the new catch shares program as well as what actions they have taken since the management change.

D1 Did you support the catch shares program before the management change in January 2011?

Answer			
	Yes		Was Not Sure
	No		Not Applicable

D2 Do you support the catch shares program now in 2012?

Answer			
	Yes		Not Sure
	No		Not Applicable

D3 Please select the reasons for your response in the previous question (D2)? Why do you support or not support the existing catch shares program? Please mark all that apply.

	More stable jobs		Fewer jobs
	Increase in income		Decrease in income
	More stable income		Less stable income
	Increase in safety		Decrease in safety
	Increase in business flexibility		Management program difficult to understand
	Increase in market competition		Increased cost to enter fishery
	Increase in market value		Increased cost to remain in the fishery
	Increase in product quality		Loss of businesses and community infrastructure
	Longer fishing seasons		Boats leave the fishery and negatively impact the community
	Increase in gear flexibility		Increased cost for raw product
	Reduced bycatch		Increase in processing costs
	More businesses and better community infrastructure		Processors leave the community and negatively impact the community
	More stable delivery schedule		An increase in processing capacity
	Decrease in processing costs		Observer coverage is problematic
	Increases individual accountability		Impacts small boats/small businesses (negatively)
	Benefits business planning		Shift to other fisheries
	Other (Specify)		

Project: TNC Risk Pool

FORT BRAGG – CENTRAL COAST RISK POOL

ANNUAL SUMMARY REPORT

2012



Report prepared by: Kate Labrum[®] and Dwayne Oberhoff[†]

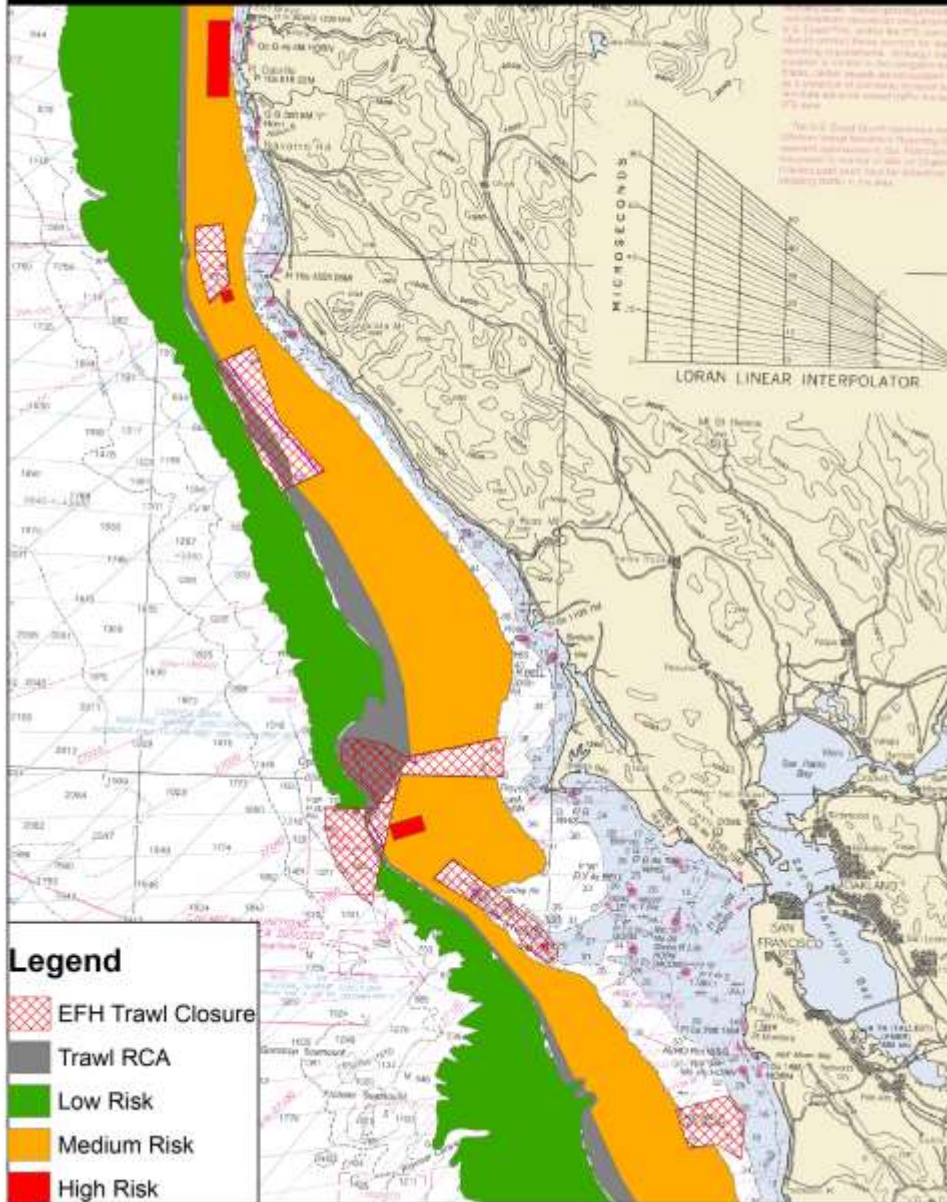
TNC Risk Pool – data collection

The screenshot displays the eCatch web application interface. On the left is a navigation menu with options like 'Enter Data', 'Monitor Limits', and 'View Maps'. The main area features a map with several red location pins. A callout box for one pin provides details: 'Tow Date: Thu Oct 27 2011', 'Common name: Bocaccio', 'Amount caught: 300 Pounds', 'Trip type: CC', and 'Vessel Name: Morning Bay'. Below the map is a 'View Catch History' section with a search filter for 'Bocaccio'. A table of catch records is visible in the background, with columns for Species, Date, Amount, and Vessel. The bottom left corner includes logos for 'The Nature Conservancy' and 'esri'. A tablet in the foreground shows the application's mobile interface.

Web based map for visualizing your catch history and by-catch events

Choose to share your catch history or by-catch with other users of eCatch. This is not a requirement

EXAMPLE Spatial Fishing Plan



Project: TNC Risk Pool

- Two Associations
- 11 vessels
- 4 gear types
- 15 million mi² area

Around the coasts

Report studies northern Calif. fishing communities

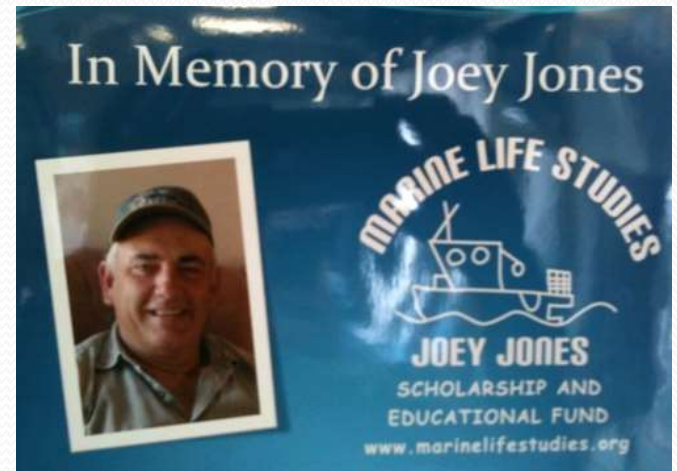
Ports facing infrastructure challenges

Like the fish stocks they depend on, fishing communities are complex, and their health can't be measured by landings alone. That's why a new report



Acknowledgements

- ❖ OR/WA Sea Grant
- ❖ Mary Gleason, TNC
- ❖ California Sea Grant Extension Program
- ❖ NOAA Fisheries – NWFSC/SWFSC
- ❖ All the fishermen



A vintage-style illustration of a fishing boat on the water. In the foreground, a fishing net is visible, attached to a wooden structure. A rope runs across the water, leading to a pulley system. The boat in the middle ground has the name 'CALIFORNIA' on its side. A seagull is flying in the sky above the boat. The background shows a range of mountains under a cloudy sky.

Thank you!

Project: Faces of California Fishing



www.facesofcaliforniafishing.com



Support Your Local Fishermen!

The Faces of California Fishing shares the real life stories and people behind California's fishing communities. You can support their work, and the local economy, by choosing high quality, sustainably harvested, delicious California-caught seafood. This site can help you learn about seafood, fishing, and where to buy local seafood.

Do you know where your seafood comes from?

- Over 85% of the seafood we consume in the US is imported,
- Farming practices in other countries often use pesticides, antibiotics and hormones that are illegal in the US.
- Only 2% of seafood imports are inspected by the FDA.

Find a Fisherman

(by Species they Catch)

[Albacore Tuna](#)

[Anchovies](#)

[Cabezon](#)

[Crab](#)

[Hagfish](#)

[Halibut](#)

[Herring](#)

Finer-scale spatial management

