

Maine's Working Waterfront Coalition

Coalition Building - Strategies for Engaging the
Public in Working Waterfronts

National Working Waterfronts &
Waterways Symposium
March 25-28, 2013

Hugh Cowperthwaite



- Private, nonprofit Community Development Corporation (CDC)
Community Development Financial Institution (CDFI)



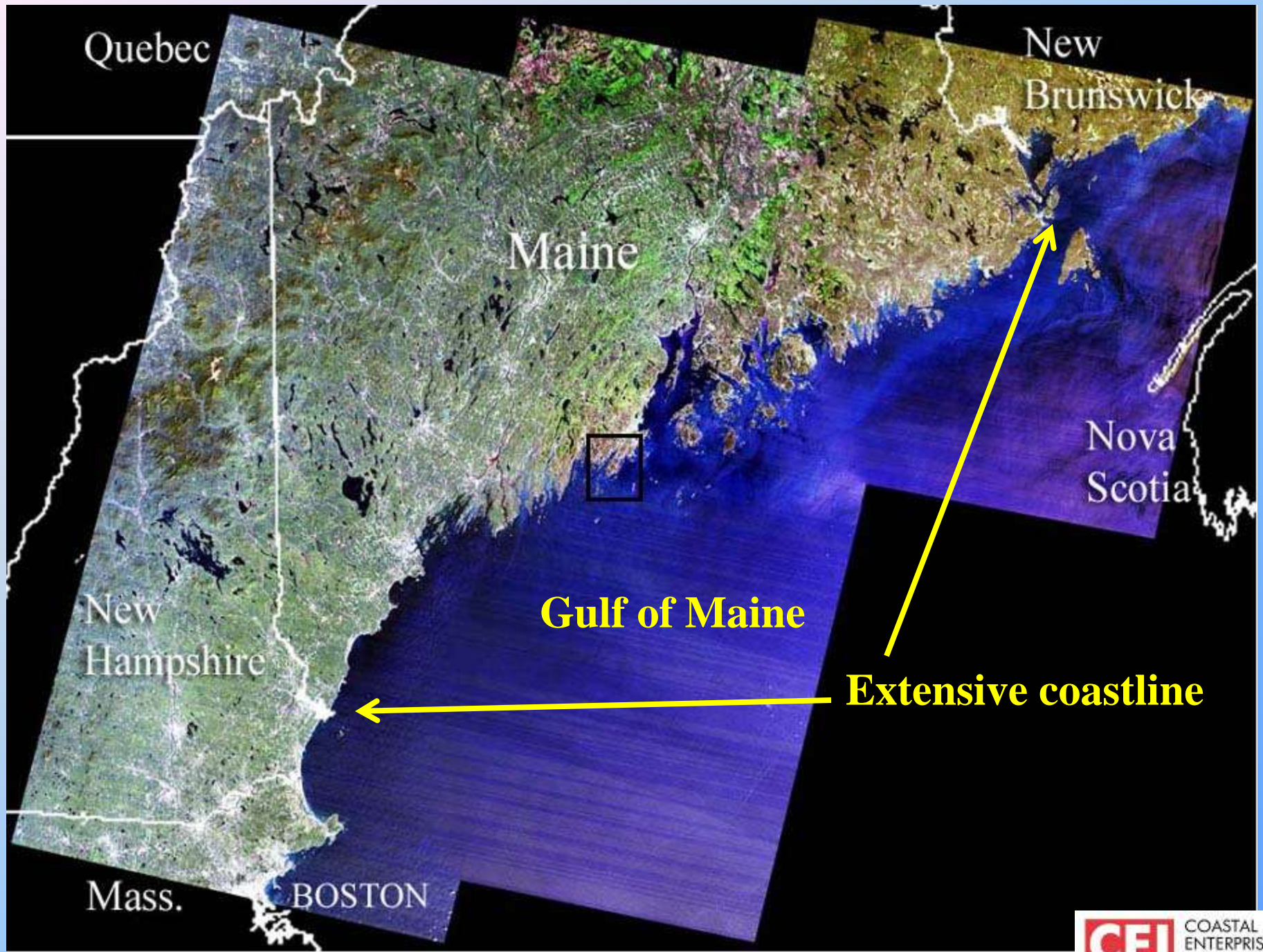
- Based in Maine (36 years)

- Provide financing and support for job-creating small businesses, natural resources industries (fisheries), community facilities, and affordable housing.

- \$14.5 million in 224 loans to fisheries/aquaculture/working waterfront related businesses

Mission: *To help create economically and environmentally healthy communities in which all people, especially those with low incomes, can reach their full potential.*





Quebec

New Brunswick

Maine

Nova Scotia

New Hampshire

Gulf of Maine

Extensive coastline

Mass.

BOSTON

Maine's Marine Community Assets



- 3,500 mile shoreline
- 149 towns in the coastal zone
- 10,300 marine harvesters
- 26,000 fishing related jobs
- \$740M in annual income
- ~25 miles of working waterfront

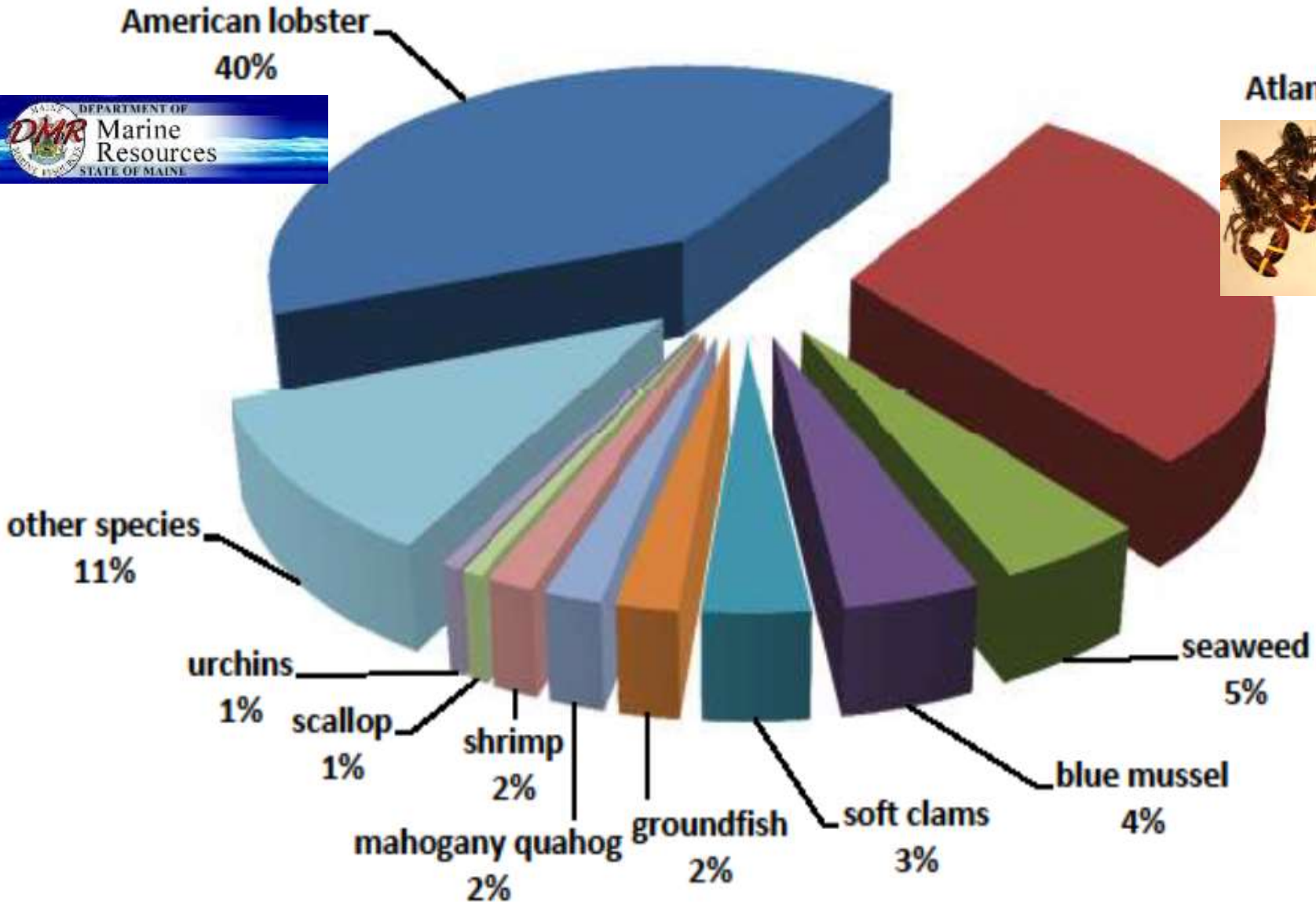


Preliminary 2012 Commercial Maine Landings By Live Pounds

Total: 314,989,031 as of 2/19/13



Atlantic herring



* Data from the Maine Department of Marine Resources.

Working waterfronts define the soul and character of the Maine coast for residents and visitors alike.

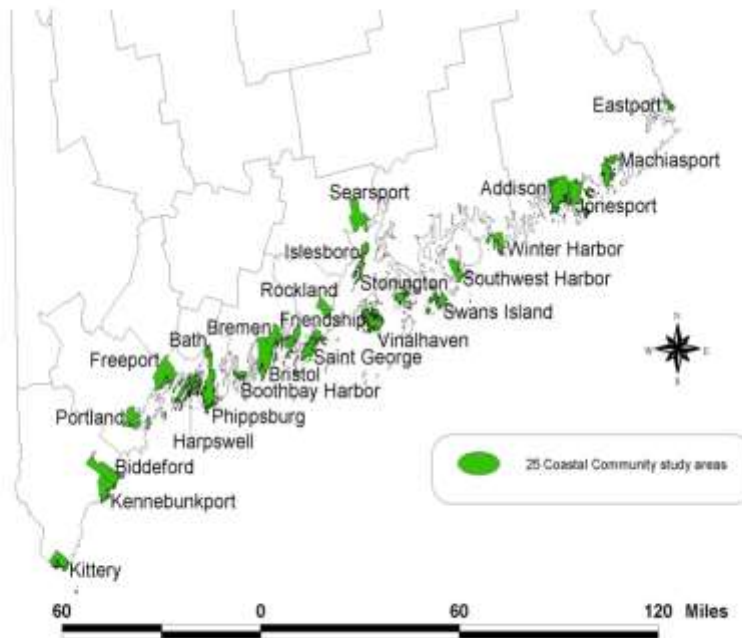


Waterfront access is a problem!!!

- 1980's – 2000's, in-migration, second homes, retirement from northeast urban areas.
- Demand for waterfront land, created a rise in prices and property taxes.
- Transfer of working waterfront from fishing families to wealthy “2nd home owners”
- We knew we had an access problem...need to protect!
- No hard data existed as evidence of a problem
- A legislative Task Force was formed in 2000 to investigate.
- One recommendation from Task Force, study the issue!!!
- Maine Coastal Program commissioned a study with CEI in 2002
- CEI selected 25 towns to assess Commercial Fishing access

Coastal Enterprises, Inc. 2002 Access Study

Commercial fishing access study in 25 Maine communities.



64% of communities
have an access problem
right now

75% of access is in
private ownership

25% of access is publicly
owned

2002 to 2004 Study Findings

- From 2000 to 2004 there has been an overall *increase* (58%) in land valuation across the 25 municipalities.
- Up 15% in Eastport, up 104% in Kennebunkport
- Pull to sell a property at high market value
- Push to sell because of higher taxes
- Fewer fishermen (a decline in license holders)

Expressed Needs

Each locality has unique needs:

- 84% Property Tax Relief
- 76% Waterfront Planning Assistance
- 72% Assistance Purchasing Access Rights



Data from CEI and SPO: *Tracking Commercial Fishing Access* - A survey of Harbormasters, twenty five Maine coastal communities 2004

Problem:

Loss of Working Waterfront

Opportunity: To develop a broad constituency, inspire new partnerships, and preserve our working waterfront.

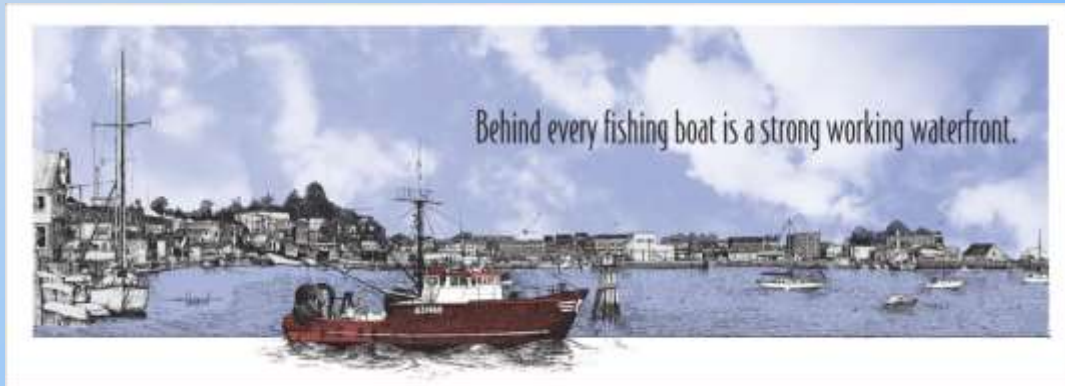


Photo Reprinted courtesy of Foster's Daily Democrat, Dover, NH. Photo by Steve Drozell.

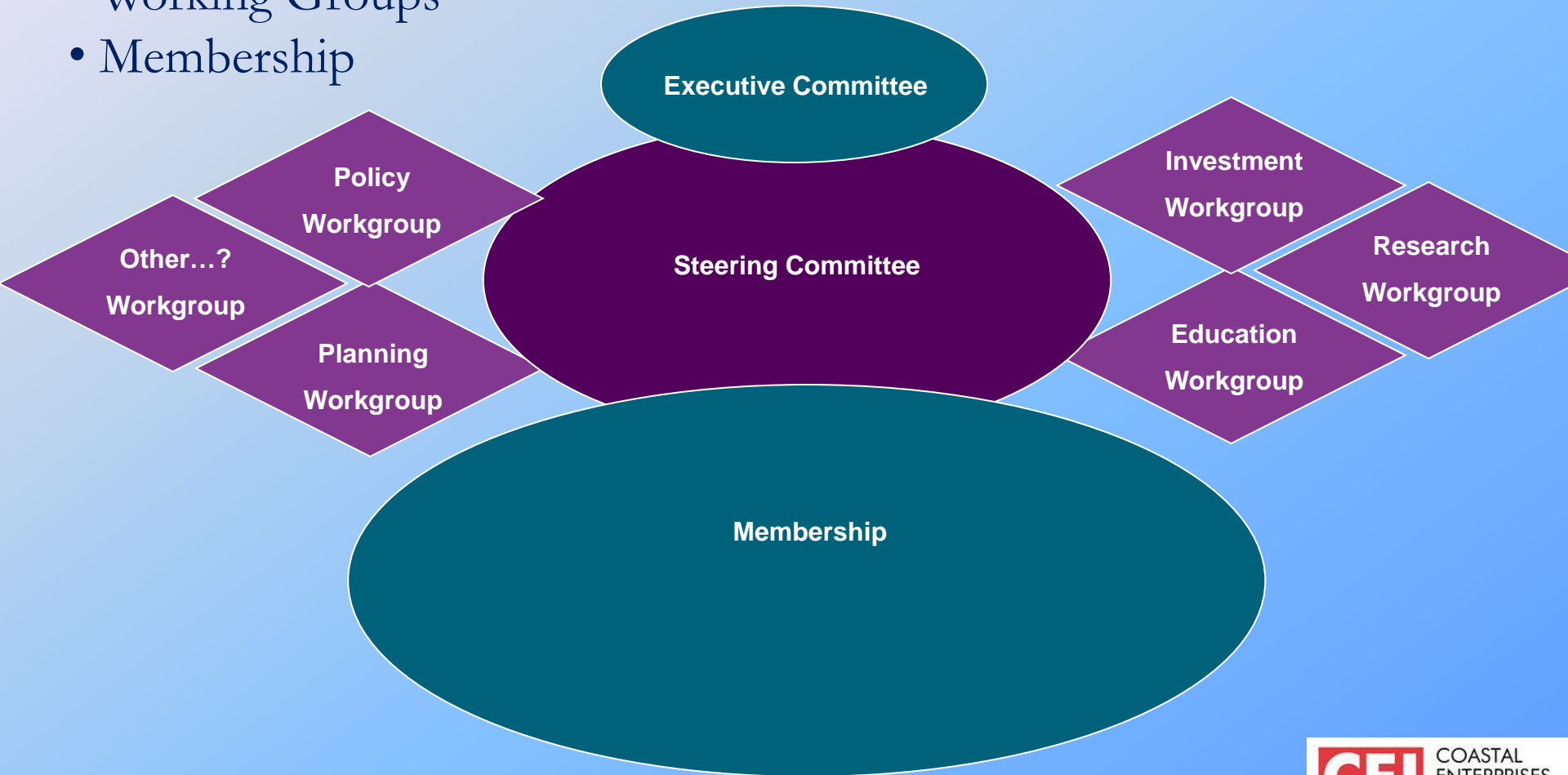
Maine Working Waterfront Coalition



A statewide group of over 140 industry associations, nonprofits, state agencies and individuals dedicated to supporting and enhancing Maine's working waterfront through policy, planning, investment and education.

Coalition Governance Structure

- Executive Committee
- Steering Committee
- Working Groups
- Membership



Coalition Governance Structure

Executive Committee Composition:

2 state agencies

1 community development organization

1 coastal & island community non-profit

1 marine trade organization

1 commercial fish organization

1 aquaculture organization

1 public member

Executive Committee

Coalition Governance Structure

Steering Committee

Set priorities and Committee work

Decision making and policy positions

Discuss issues, updates, projects, committee work

Communicate the Coalition activities with their membership

Contribute money and/or in kind to the effort

Expectation to participate in meetings



Steering Committee

Coalition Governance Structure

Working Groups

Work on specific projects as needed

Meet outside the full Coalition to accomplish specific goals.

Made up of Steering Committee and Executive Committee

Ad hoc groups formed as needed.

Past Working Groups have focused on:

Policy (taxes & public investment)

Planning

Investment (loans, grants)

Education (posters, stickers, pamphlet)

workshops & seminars

Research (updating data)..building the case!



Coalition Governance Structure

Membership

Support the WWC mission

Assist in our efforts

Name and contact info included in membership list

Included on distribution list for WWC emails about events, activities, meetings, outcome, etc.



Membership

Working Waterfront Coalition Responses

Working Waterfront Bond: Respond to the gap between “market value” of a property and available financing for fishermen.

Current Use Taxation: Equity in tax policy for Fishing similar to what was already available to our Farming and Forestry.

Loan funds

Creative Partnerships

Outreach

Research



Building Momentum for Policy



Press Coverage

- *“Governor Baldacci to speak at working waterfront press conference”*
- *“Maine Working waterfront coalition launches campaign”*
- *“Saving the working waterfront”*

November 7, 2005

Question 5: Bond Funds



Do you favor a \$12,000,000 bond issue to purchase land and conservation easements statewide from willing sellers for conservation, water access, wildlife and fish habitat, outdoor recreation, including hunting and fishing, farmland preservation and working waterfront preservation to be matched by at least \$7,000,000 in private and public contributions?"

November 7, 2005

Question 5: Bond Funds



- The Bond question passed by Maine voters by an overwhelming 66-34% margin.
- \$2,000,000 of this bond was to go to working waterfront preservation.



November 7, 2005

Question 7: Tax Law



“Do you favor amending the Constitution of Maine to permit the Legislature to authorize waterfront land used for commercial fishing activities to be assessed based on the land's current use in a manner similar to treatment now available for farms, open space and forestland?”



November 7, 2005

Question 7: Tax Law



- The Tax Law question passed by Maine voters by an overwhelming 72-28% margin.



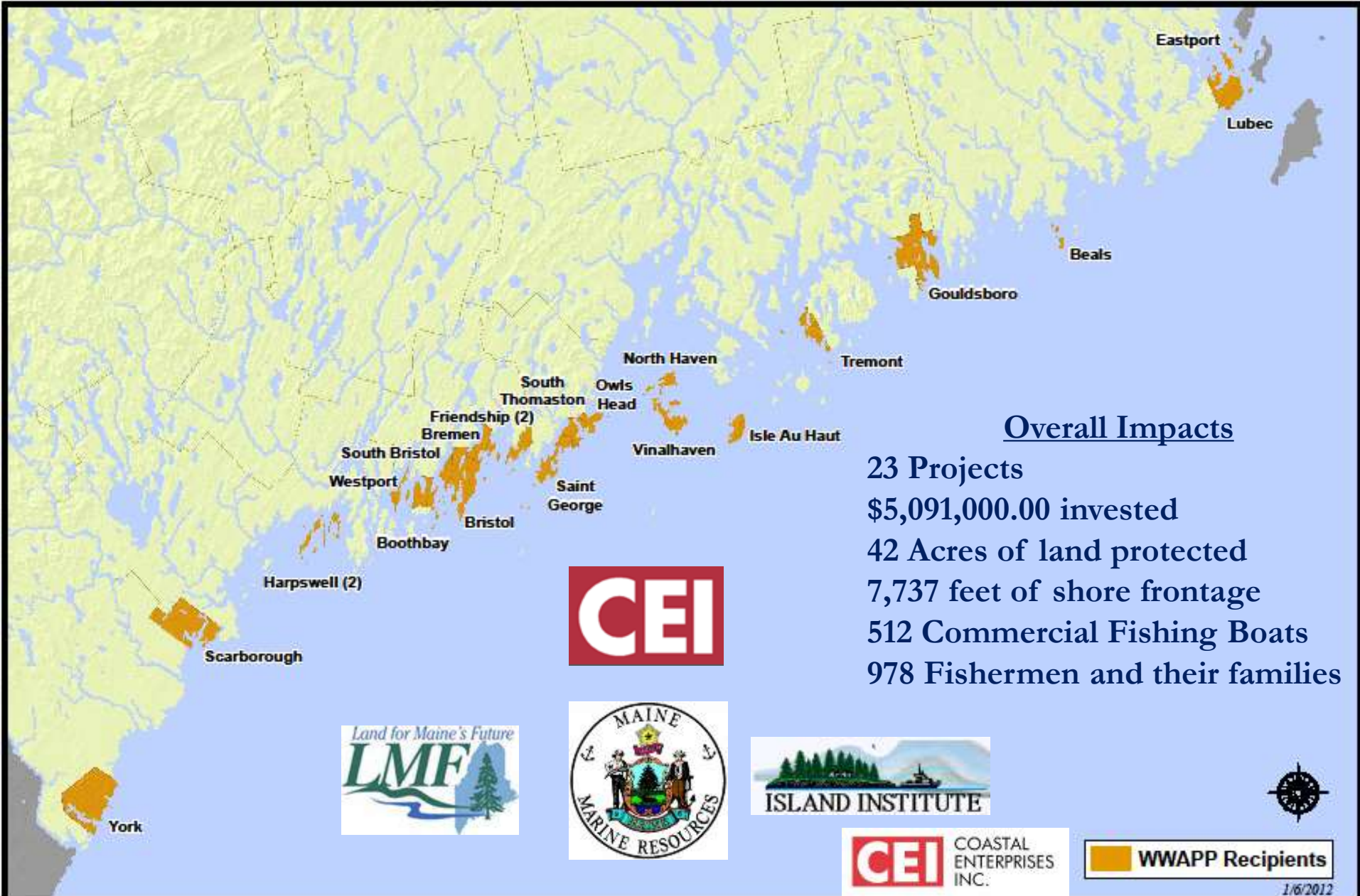


Coalition Persistence!!!



- Developed a case study (to share & inform)
- Show up in August (monitor the legislature)
- Have fishermen present “when it counts”
- Stay focused on the Coalitions goals
- Monthly meetings (RSVP, offer food) with clear agendas, central location (Augusta), minutes distributed
- Kept a rolling list of accomplishments

Maine's Working Waterfront Access Pilot Protection Program (WWAPP)



Overall Impacts

23 Projects

\$5,091,000.00 invested

42 Acres of land protected

7,737 feet of shore frontage

512 Commercial Fishing Boats

978 Fishermen and their families



Maine's Working Waterfront Tax Law

- As of April 1, 2012
- 81 properties enrolled
- 105.63 acres of land protected
- Fair Market Value of properties 21.6 M
- <http://www.maine.gov/revenue/forms/property/pubs/workingwaterq&a.htm>



Policy Work

Maine Working Waterfront Coalition

Working Waterfront Access Protection Program

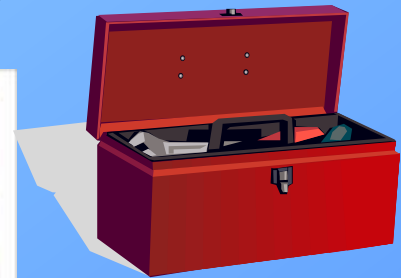
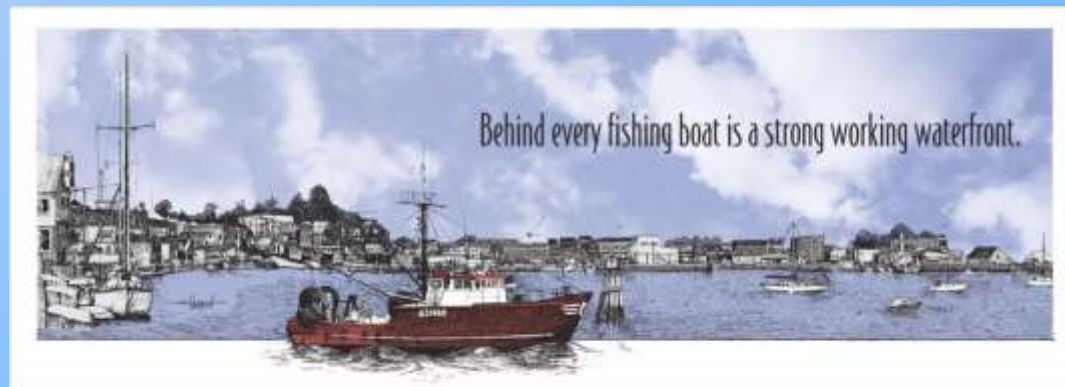
Maine's Working Waterfront Tax Law

National Working Waterfront Network

National Symposium(s) on Water Access (X 3)

Nationwide Working Waterfront Research (EDA)

Federal Working Waterfront Initiative \$\$



WWF Toolbox

THANK YOU

Hugh Cowperthwaite
Fisheries Project Director
Coastal Enterprises Inc.
2 Portland Fish Pier, Suite 206
Portland Maine 04101-4633
Phone 207-535-2920
hsc@ceimaine.org
www.ceimaine.org