

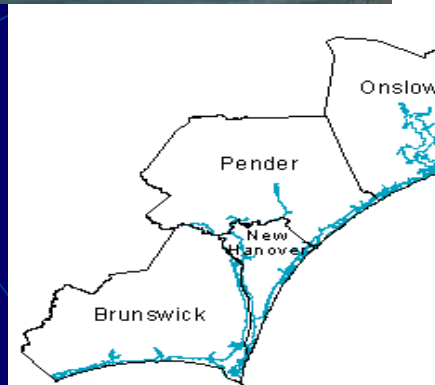
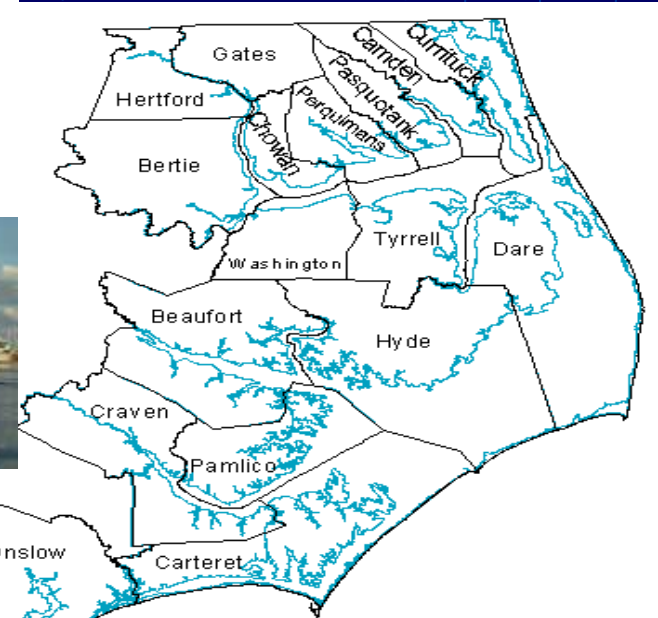
North Carolina Public Beach and Waterfront Access Program

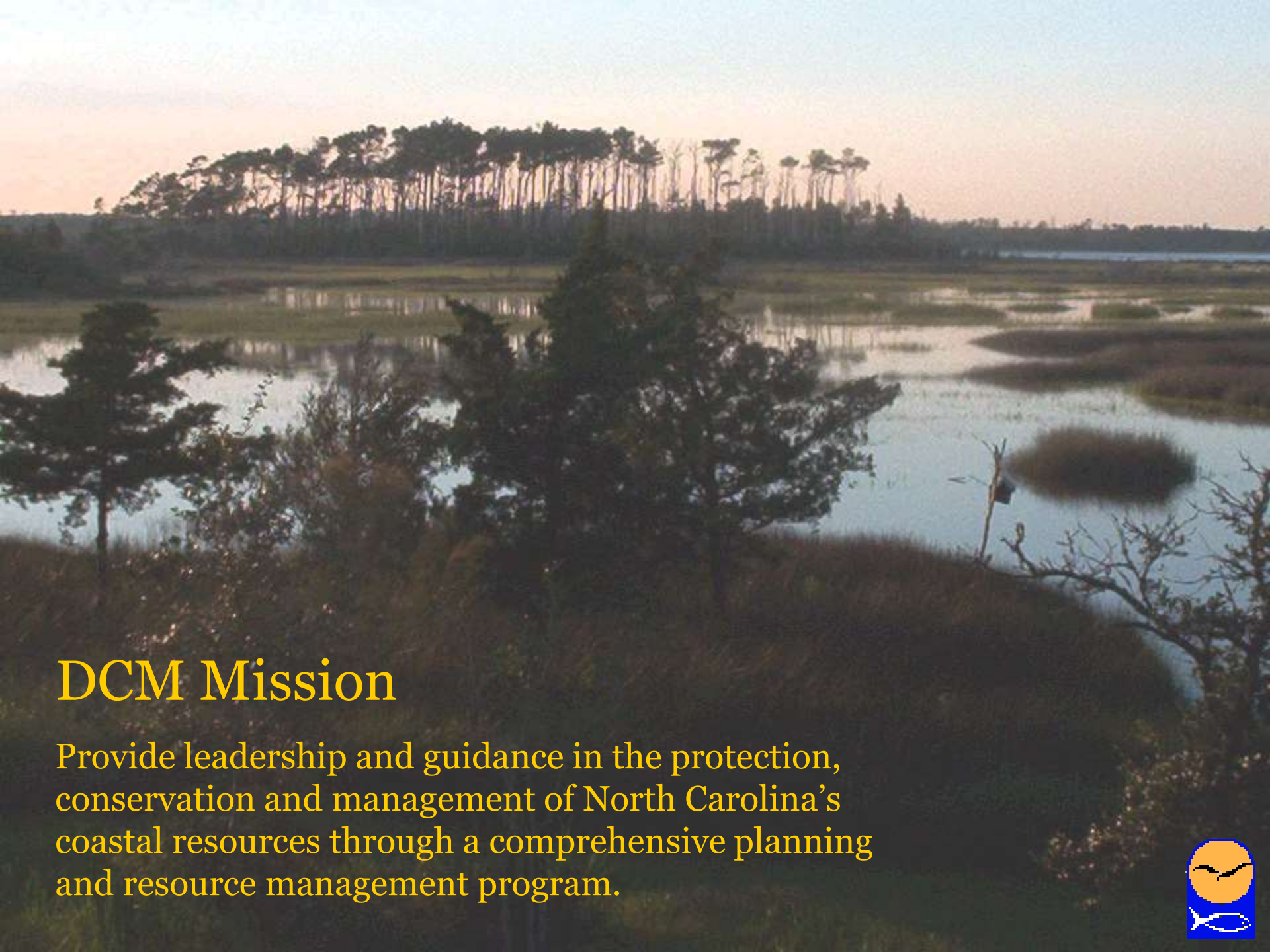


Maureen Meehan, District Planner, NCDENR-DCM
National Working Waterfronts & Waterways Symposium
Tacoma, Washington
March 27, 2013



CAMA JURISDICTION





DCM Mission

Provide leadership and guidance in the protection, conservation and management of North Carolina's coastal resources through a comprehensive planning and resource management program.



Division Action Items:

- Permitting and Enforcement
- Federal Consistency
- Land Use Planning
- North Carolina Coastal Reserve
- Public Access



NC Public Access History

- State Access Program Began 1981
- State Appropriations and Federal Grants
- Annual Grants
- Types of Access



Types of Access



Types of Access



Types of Access



Types of Access



NC Beach and Waterfront Access Inventory

- Initial Assessment of Program - 1988
- Access Inventory - 1996
- Updating the existing database - 2013
 - Photos
 - Amenities
 - GPS – Google Earth





North Carolina

Division of Coastal Management

Beach & Coastal Waterfront Access

REFRESH MAP SERVICE

zoom to a county

zoom to a beach



Full Extent



Zoom In



Zoom Out



Pan



Identify



Print

Map Layers

Search

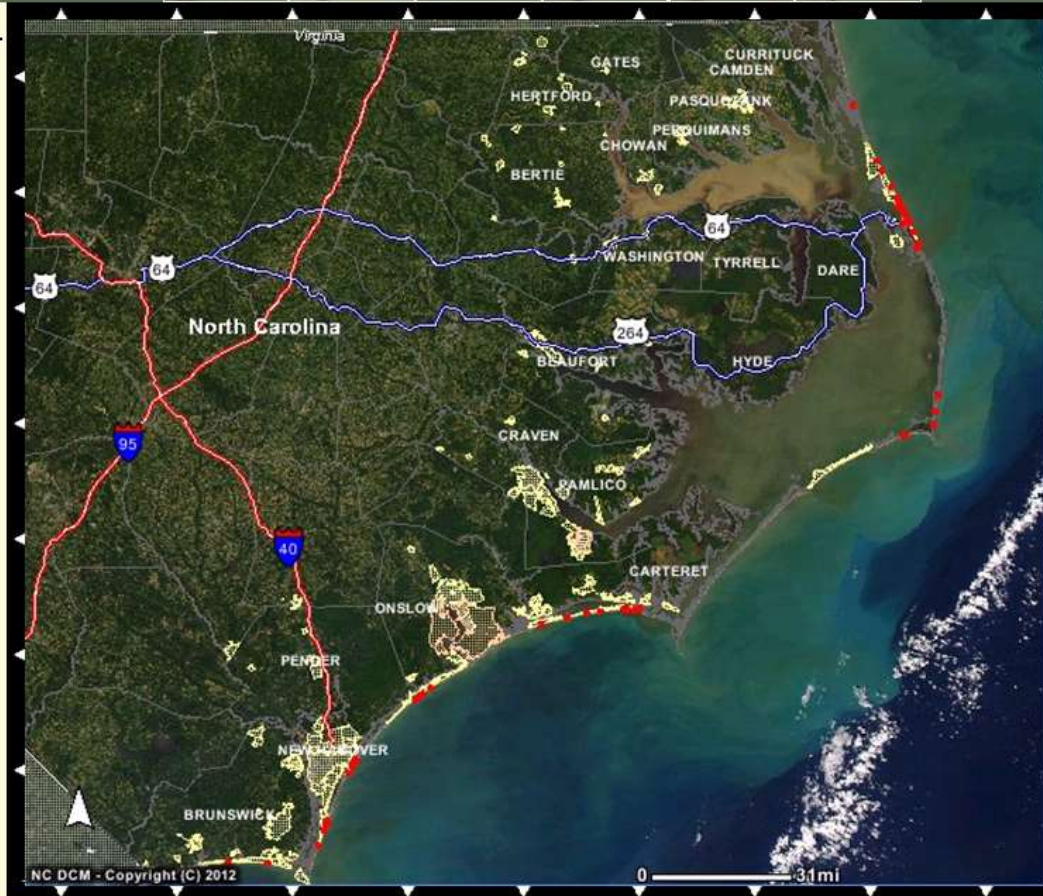
Help

LAYER LIST

- ☒ All Map Layers
- ☒ Beach and Waterfront Access
 - ☒ Regional Beach Access
 - ☒ Neighborhood Beach Access
 - ☒ Local Beach Access
 - ☒ Waterfront Access
- ☒ Base Map Photography

Refresh Map

☒ Auto Refresh



Zoom In

NC State Plane NAD 83 Feet: X:

Y:





North Carolina

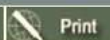
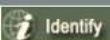
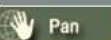
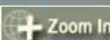
Division of Coastal Management

Beach & Coastal Waterfront Access

REFRESH MAP SERVICE

zoom to a county Go

zoom to a beach Go



Toolbar

Map Layers Search Help

LAYER LIST

- All Map Layers
- ☒ Beach and Waterfront Access
- ☒ Regional Beach Access
- ☒ Neighborhood Beach Access
- ☒ Local Beach Access
- ☒ Waterfront Access
- ☐ Base Map Photography

Refresh Map

☒ Auto Refresh

Legend



Zoom In

NC State Plane NAD 83 Feet: X:

Y:

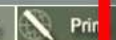
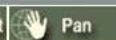




North Carolina

Division of Coastal Management

Beach & Coastal Waterfront Access



Map Layers

Search

Help

LAYER LIST

- ☒ All Map Layers
- ☒ Beach and Waterfront Access
 - ☒ Regional Beach Access
 - ☒ Neighborhood Beach Access
 - ☒ Local Beach Access
 - ☒ Waterfront Access
- ☒ Base Map Photography
 - ☒ 1998 Oceanfront Photos
 - ☒ 2003 Photos
 - ☒ 2004 Oceanfront Photos

Refresh Map

☒ Auto Refresh



- zoom to a county
- Wrightsville Beach
- Atlantic Beach
 - Avon
 - Bald Head Island
 - Carolina Beach
 - Corolla
 - Duck
 - Emerald Isle
 - Figure Eight Island
 - Hatteras
 - Holden Beach
 - Indian Beach
 - Kill Devil Hills
 - Kitty Hawk
 - Kure Beach
 - Nags Head
 - North Topsail Beach
 - Oak Island
 - Ocean Isle
 - Ocracoke Island
 - Pine Knoll Shores
 - Rodanthe
 - Salter Path
 - Salvo
 - Southern Shores
 - Sunset Beach
 - Surf City
 - Topsail Beach
 - Waves
 - Whalebone
 - Wrightsville Beach

to of Access Site:



[Viewing collections to this site?](#)

Print

Clear

Quick Zoom

Identify

NC State Plane NAD 83 Feet: X: 2367117.06 Y: 170692.87





North Carolina
Division of Coastal Management
Beach & Coastal Waterfront Access

REFRESH MAP SERVICE

zoom to a county

Wrightsville Beach

Layer Identified: Public Access

Identified:	1
Place:	Wrightsville Beach
Street:	East Salisbury St
Parking:	192
Street Parking:	Yes
Parking (Hourly Rate):	1.25
Overlook:	Yes
Handicap Access:	Yes
Restroom:	Yes
Showers:	Yes
Picnic Table:	No
Bike Rack:	No
Access Type:	Regional
Site:	WB32
Photo:	WB32

Identify Tool

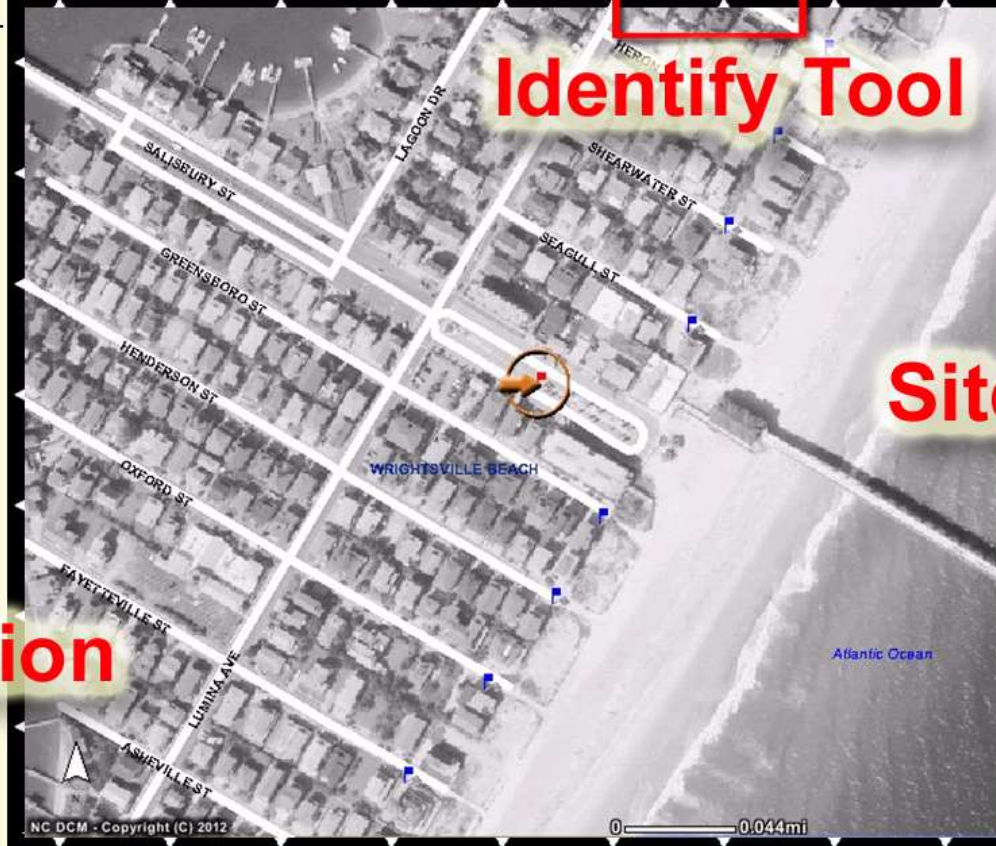
Photo of Access Site:



[Need driving directions to this site?](#)

Site Photo

Information



NC DCM - Copyright (C) 2012

0 0.044mi

Identify

NC State Plane NAD 83 Feet: X: 2366763.1 Y: 171316.35





North Carolina

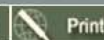
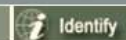
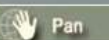
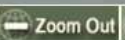
Division of Coastal Management

Beach & Coastal Waterfront Access

REFRESH MAP SERVICE

zoom to a county Go

Wrightsville Beach Go



Map Layers

Search

Help

Search Access Sites

select one...

- ☐ Regional Access
- ☐ Neighborhood Access
- ☐ Local Access
- ☐ Coastal Waterfront

- ☐ Regional (parking >25)
- ☐ Neighborhood (parking <25)
- ☐ Local (limited or no parking)
- ☐ Coastal Waterfront

Cancel

Search



NC DCM - Copyright (C) 2012

0 0.044mi

Pan

NC State Plane NAD 83 Feet: X: 2366310.2 Y: 170116.77





North Carolina
Division of Coastal Management
Beach & Coastal Waterfront Access

REFRESH MAP SERVICE

zoom to a county

Wrightsville Beach

Map Layers Search Help

Layer Identified: Public Access

Identified	1
Place:	Wrightsville Beach
Street:	East Salisbury St
Parking:	192
Street Parking:	Yes
Parking (Hourly Rate):	1.25
Overlook:	Yes
Handicap Access:	Yes
Restroom:	Yes
Showers:	Yes
Picnic Table:	No
Bike Rack:	No
Access Type:	Regional
Site	WB32
Photo:	WB32

Print



Photo of Access Site:



[Need driving directions to this site?](#)

Print

Identify

NC State Plane NAD 83 Feet: X: 2366763.1 Y: 171316.35



North Carolina Beach & Waterfront Access



Certain features viewed on this map require field verification by authorized representative; therefore, this map is considered by the State of North Carolina to be accurate reference material only, and is not intended for use, nor should it be accepted as an authoritative document. The information contained in this map may be subject to expiration and/or updates. For more information please contact your local Division of Coastal Management office (1-888-4RCOAST).



Identified	1
Place:	Wrightsville Beach
Street:	East Salisbury St
Parking:	192
Street Parking:	Yes
Parking (Hourly Rate):	1.25
Overlook:	Yes
Handicap Access:	Yes
Restroom:	Yes
Showers:	Yes
Picnic Table:	No
Bike Rack:	No
Access Type:	Regional
Site:	WB32
Photo:	



:At marked location





[Wrightsville Beach Hotels](#)
[Wrightsville Beach Restaurants](#)

Print

Send ▼

Link/Embed [Clear Map](#)

morehead city, nc



East Salisbury St, Wrightsville Beach, NC



[+ We found similar places. See all 2 Matches.](#)

+Add Stop | ☐ Round Trip | Reverse

Options

[Get Directions](#)

Via NC-24 W
2 hrs 7 mins / 92.75 miles

Est. Fuel Cost
Calculate

You can adjust your route by **Dragging the Route Line**

Driving Directions



Morehead City, NC

in Morehead City **4.4** Vibe Score™

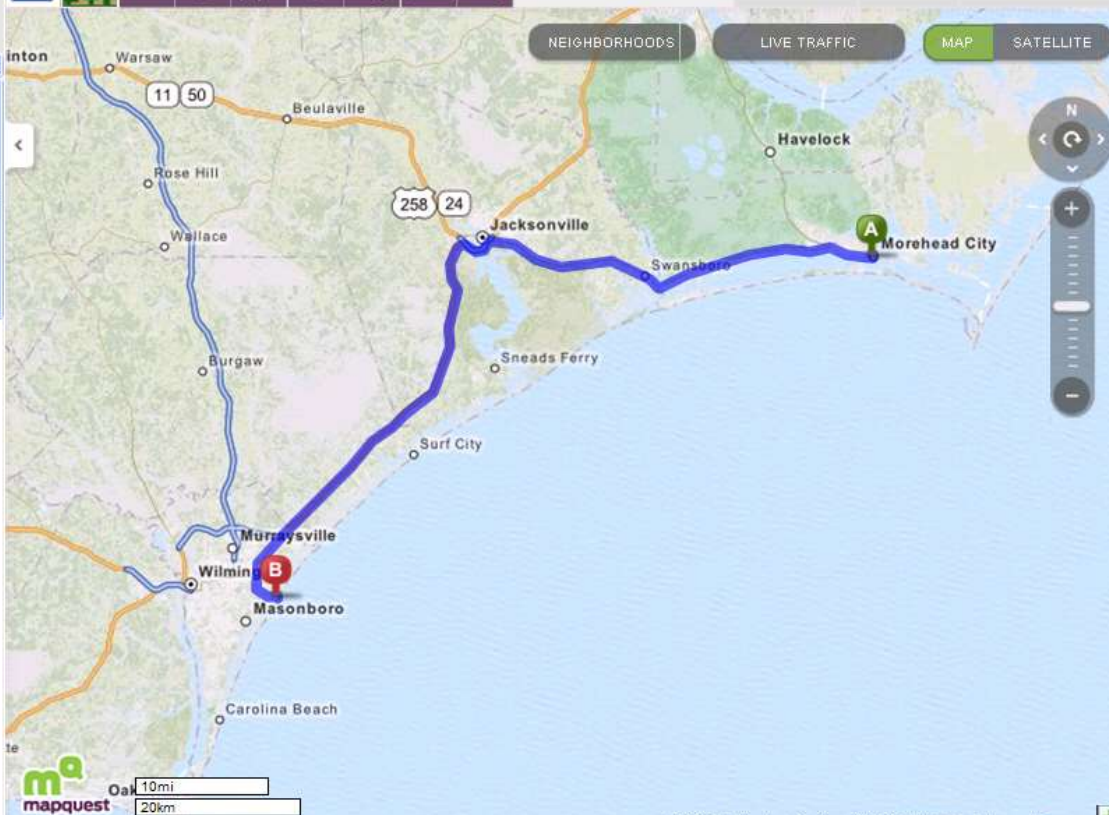
[Add a Note](#) [Search Nearby](#)

Popular Restaurants Nearby:

1st - Olive Garden

2nd - Floyd's 1921

3rd - Ruddy Duck Tavern



Holiday Inn Express Hotel - www.hiexpress.com - Free Internet & Breakfast Bar. Call 800-261-9168 or book online.



Access Web Tool

- http://ims.ncdenr.org/Website/nccoastal_access/viewer.htm



Access Inventory and the Governors' South Atlantic Alliance

- Priorities
 - Mapping
 - Access Inventory
 - Definitions
 - Database
 - Gap Analysis



Questions?

Maureen Meehan, District Planner
NC Division of Coastal Management
maureen.meehan@ncdenr.gov
252-808-2808

www.ncccoastalmanagement.net

