



National Working Waterfronts & Waterways Symposium
March 25 – 28, 2013 Tacoma, WA

David Mathewson
Director of Planning & Economic Development



Overview

- 7,500 Acres Land, 43 Miles of Waterfront
- 27 Terminals, 270 berths, 85 container cranes
- Non-Taxpayer Supported
- Tidelands Trust lands



North American Container Ports (in million TEUs)

	<u>2012</u>	<u>2010</u>
Los Angeles	8.1	7.8
Long Beach	6.0	6.26
NY/NJ	5.5	5.3
Savannah	2.9	2.8
Vancouver	2.5	2.5
Oakland	2.3	2.3
Seattle	2	2.1
Houston	1.8	1.8
Tacoma	1.485	1.5
Montreal	1.36	1.3

Over 40% of US containerized imports come through the
Ports of Los Angeles/Long Beach

Port of Los Angeles Economic Impact

- 896,000 (1 in 8) jobs in Southern California
- 1.2 million jobs statewide
- 3.6 million jobs nationally
- \$6 billion in local and state tax revenue
- \$23 billion in tax revenue nationally



Land Use Diversity

- Cargo
- Cruise
- Commercial Fishing
- Maritime Support
- Commercial/Retail
- Marinas
- Recreation



Port Challenges

- Environmental
 - Port Impacts
 - Project Challenges
- Public Access
- Preserving Maritime Uses
- Port Competition



Environmental Initiatives

- SP Bay Ports Clean Air Action Plan
- Clean Truck Program
- Vessel Speed Reduction Program
- Alternative Maritime Power
- Water Quality/Water Resource Action Plan



Public Access



Public Infrastructure



Commercial Redevelopment



Battleship USS Iowa



Preserving Maritime Uses

- California Coastal Act
- Tidelands Trust
- Port Master Plan Update



Proposed Land Use

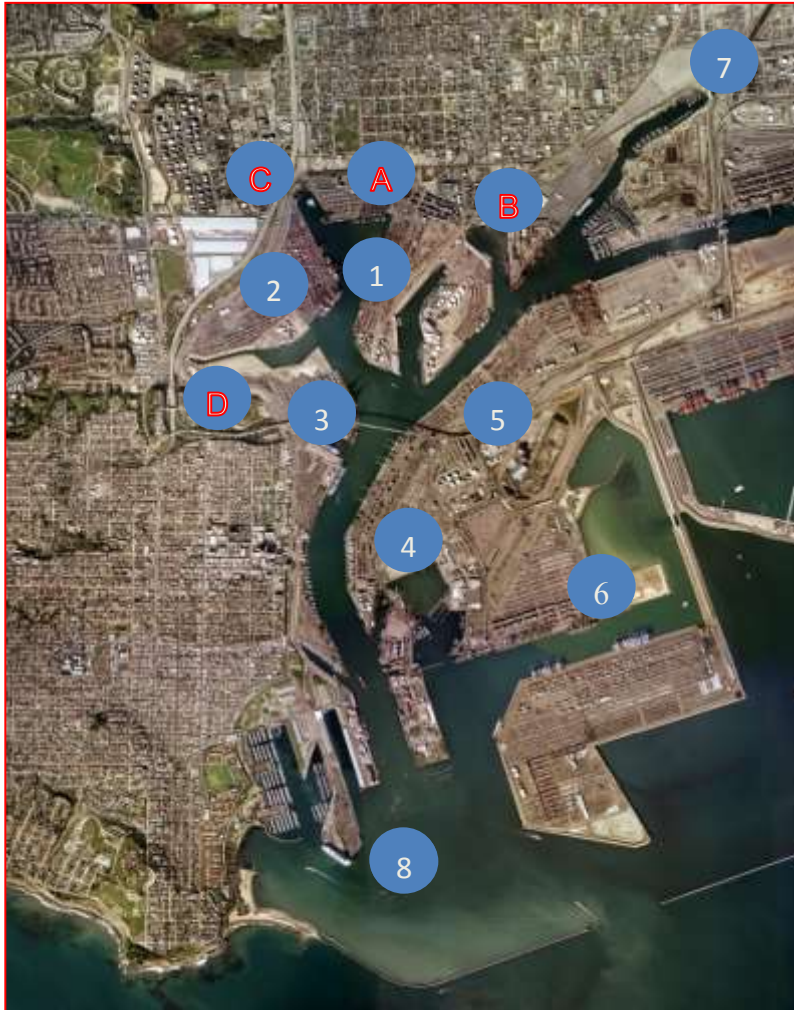
- Terminal Island /West Basin cargo handling core
- San Pedro waterfront for public access
- East Wilmington mixed use
- Commercial Fishing
- Maritime Support
 - Boatyards
 - Marine Services
 - Chassis Pools
- Recreational Boating
- City Dock No. 1 Marine Research Facility



Port Competition

- Infrastructure Investment
 - Cargo Terminals
 - Transportation Improvements
 - Main Channel Deepening

Expanding for Trade



Cargo Terminals:

1. TRAPAC : 60 acres, new wharf, on-dock rail
2. Yang Ming: 30 acres, new wharf
3. China Shipping: 30 acres, new wharf
4. Evergreen: 55 acres, new wharf
5. YTI : updated wharves
6. APL : +40 acres, new wharf
7. SCIG Rail yard
8. Channel deepening to -53'

Roadway Infrastructure:

- A. Harry Bridges roadway improvement
- B. South Wilmington grade separation
- C. C Street interchange
- D. Vincent Thomas/Harbor Blvd interchange

Thank You !

