

# Cultural Resources on the Shorelines of Washington State

Stephenie Kramer



Willamette Cultural Resources Associates, Ltd.

Shoreline and Coastal Planners Meeting

Bellingham, Washington

October 20, 2016

# Types of cultural resources in the shoreline area

- ◇ Archaeological resources
  - ◇ Pre-contact
  - ◇ Historical period
- ◇ Historic structures
- ◇ Cultural landscapes

# Common archaeological resource along marine shorelines

Midden, shell middens



Photo courtesy of DAHP



Midden sites in Penn Cove area

# Literally, right in your backyard



Photo courtesy of Bob Kopperl

Data Recovery Project, Utsalady, Island County 451S7

# Fish weirs/traps



Photo courtesy of DAHP

Mud Bay, Thurston County

# Midden along the Columbia River (non-marine shoreline)



Photo courtesy of DAHP

Clark County



# Non-marine shoreline



Bear Creek Site, Redmond 45KI839

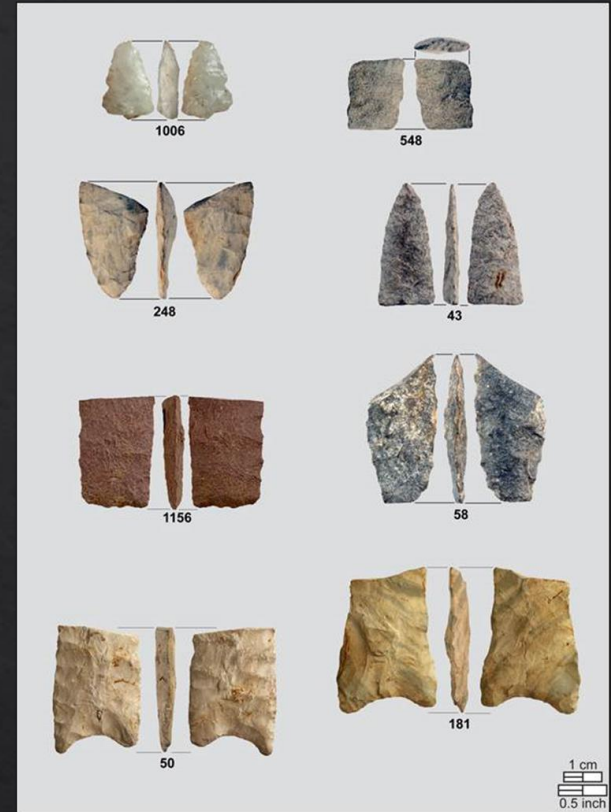


Photo courtesy of SWCA Environmental Consultants



# Reservoir/lake Site Erosion Monitoring and Testing



45LE455, Lewis County



# Archaeological Features



Photo courtesy of Archaeological Investigations Northwest;  
Punke et al. 2009.

Camas Oven Chehalis River 45LE611





Tokul Creek Fish Hatchery Dam ca. 1955

# Historic Roads and Road Segments



Terminus of Old Winston Creek Road 45LE931



# Historic Railroad Properties, Grades, Trestles

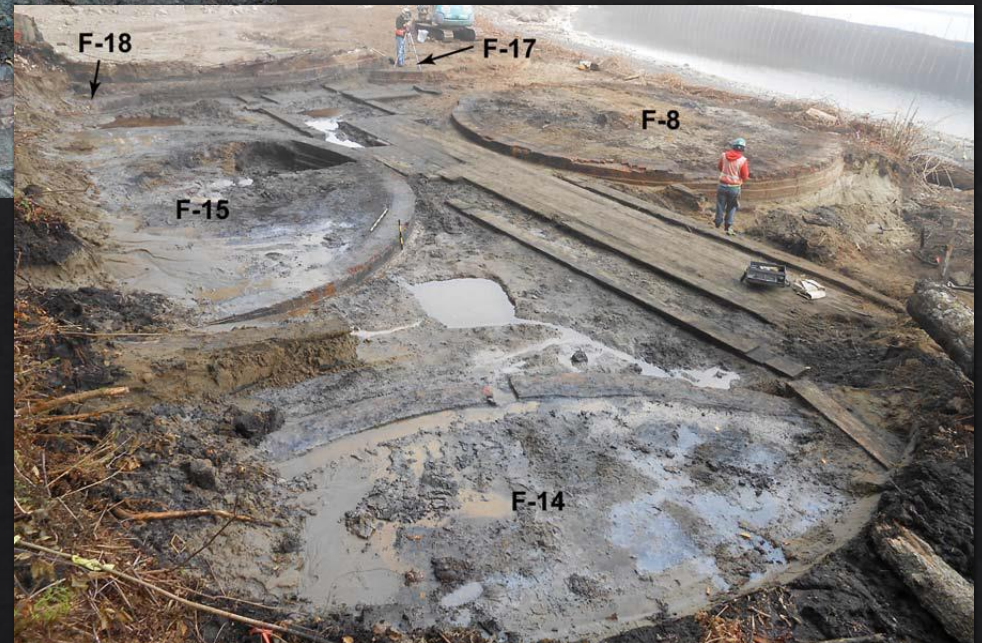


Woodard Bay

# Irondale Historic District



45JE358  
Port Hadlock



# Submerged Resources

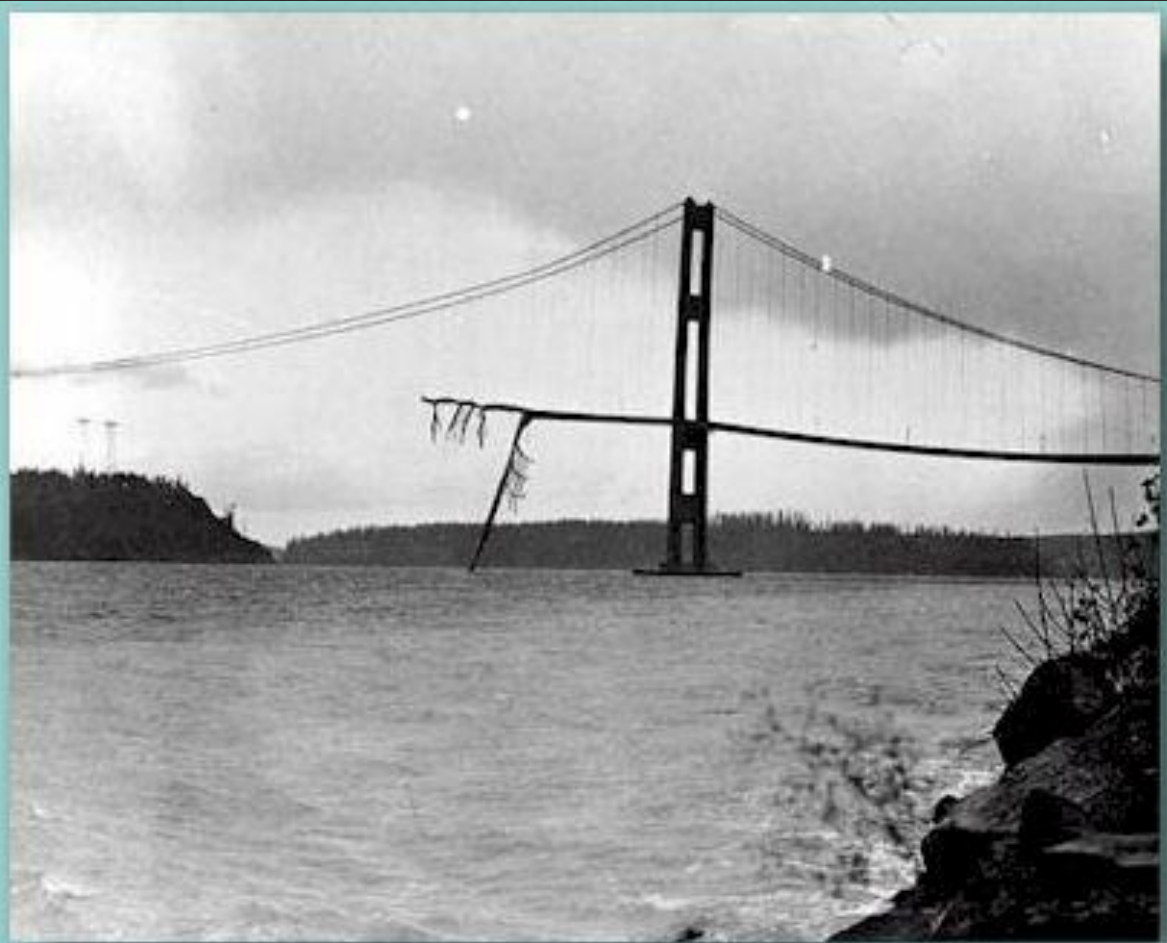
Shipwrecks – can be in shoreline zone but also much deeper waters



Photo courtesy of DAHP

Tugboat JE Boyden wreck, 45K11005, Lake Union

# Bridges



Gallop Bridge 1940



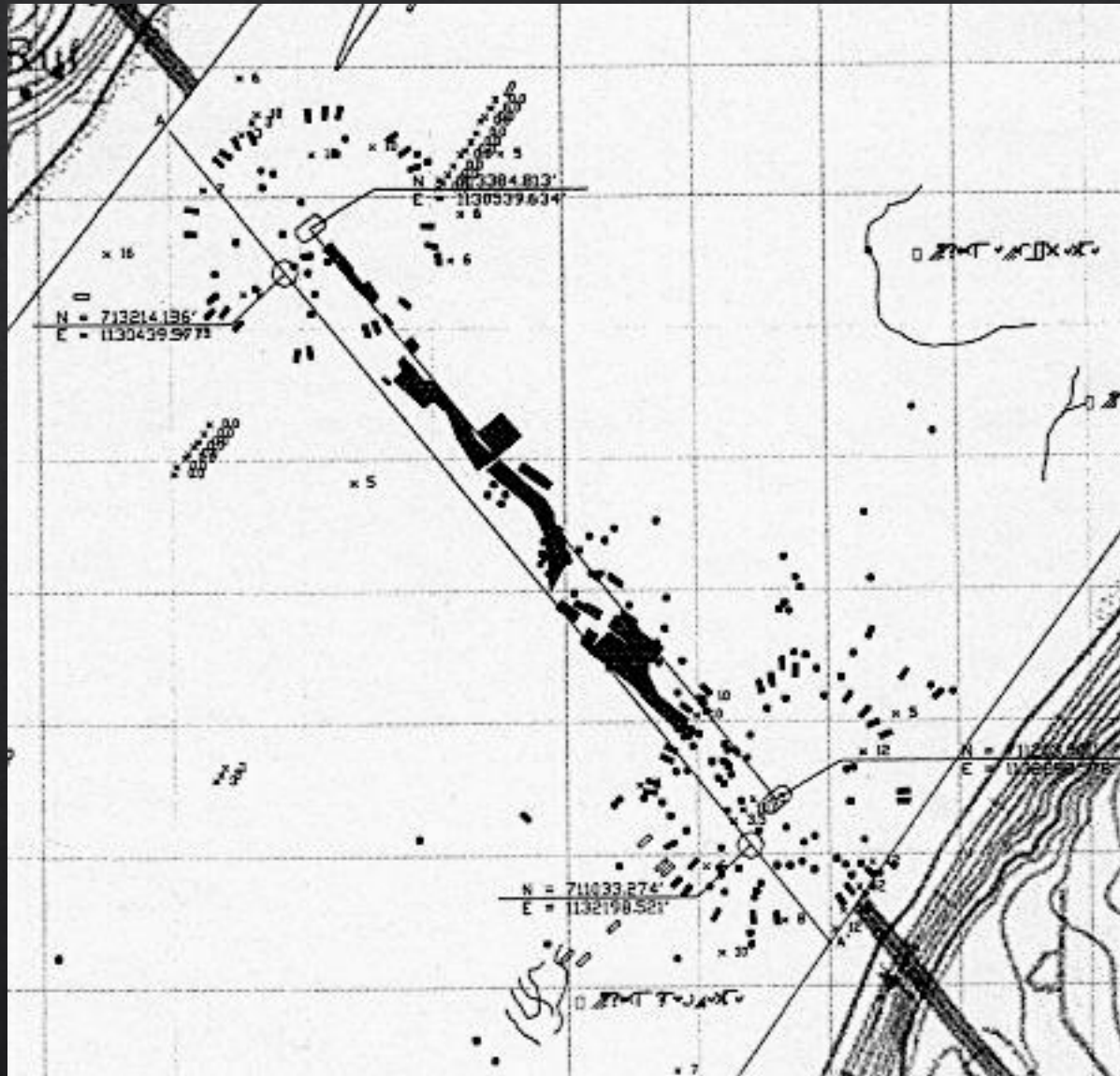


Photo courtesy of DAHP

Galloping Gertie 2006

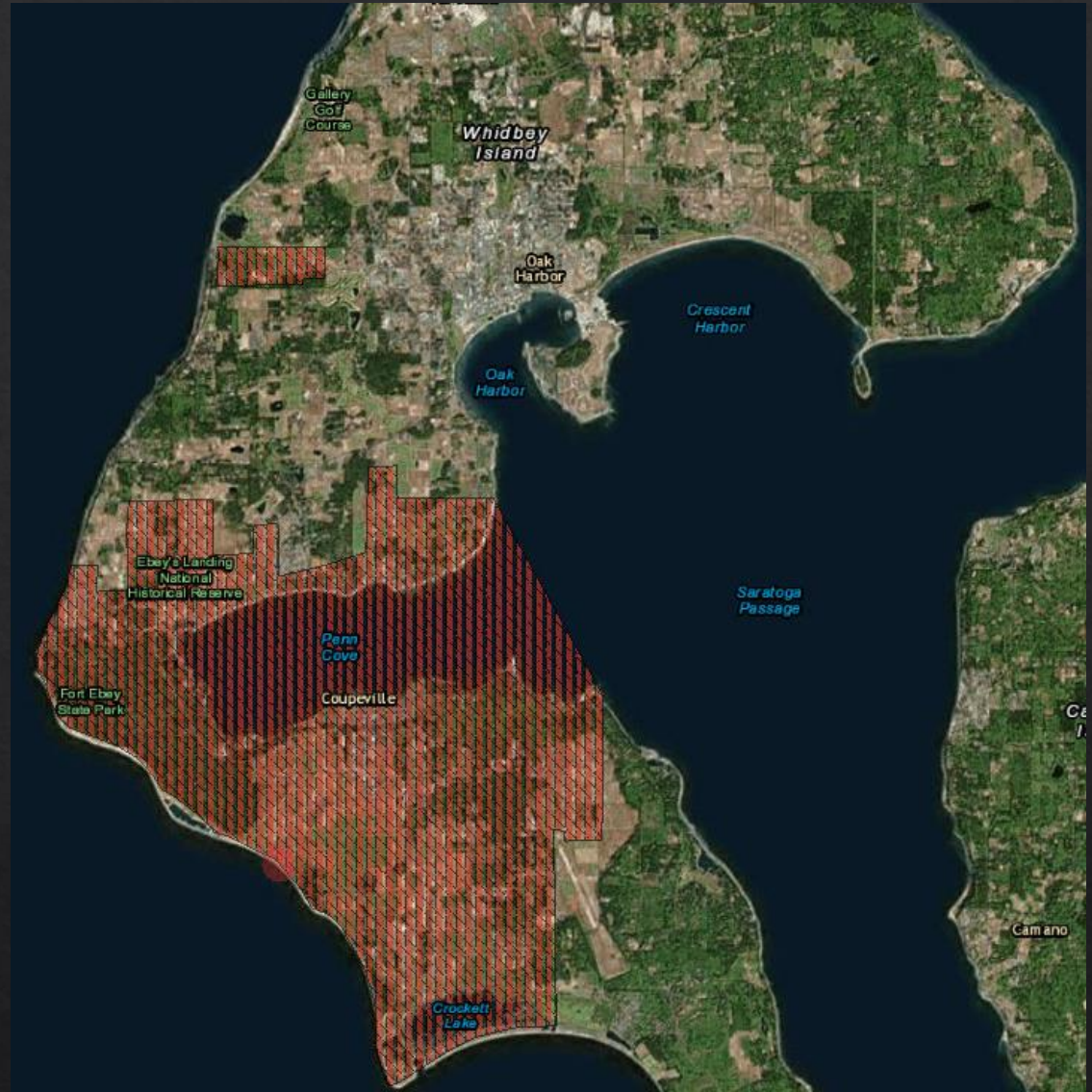
# Above-ground Resources



Shelbanks Cabin, 1908, Bremerton

# Cultural Landscape

Ebey's Landing  
Historic Reserve



# Also in a cultural landscape



Crib Dam and associated buildings on Cedar Lake in the Cedar River Watershed Cultural Landscape, ca 1915.

# Historic Cemeteries

Please don't forget these.  
They are cultural resources.



Previously Slocum/Oakland Cemetery in Mason County

# Good places for cultural resources

Behind bulkheads, contemporary and old shorelines, buried shorelines (under fill), river deltas, confluences of creeks and rivers, confluences of creeks and Puget Sound, sandspits, wetland perimeters....



# Other types of archaeological resources near shorelines

- ◇ Historic ferries and ferry landings
- ◇ Sites associated with resource extraction: docks, mills, storage facilities
- ◇ Fish processing sites (canneries)
- ◇ Military Installations
- ◇ Railroads, railroad camps
- ◇ Fur trade
- ◇ Exploration (i.e. Lewis and Clark)
- ◇ Irrigation features
- ◇ And more.

Thank You!

