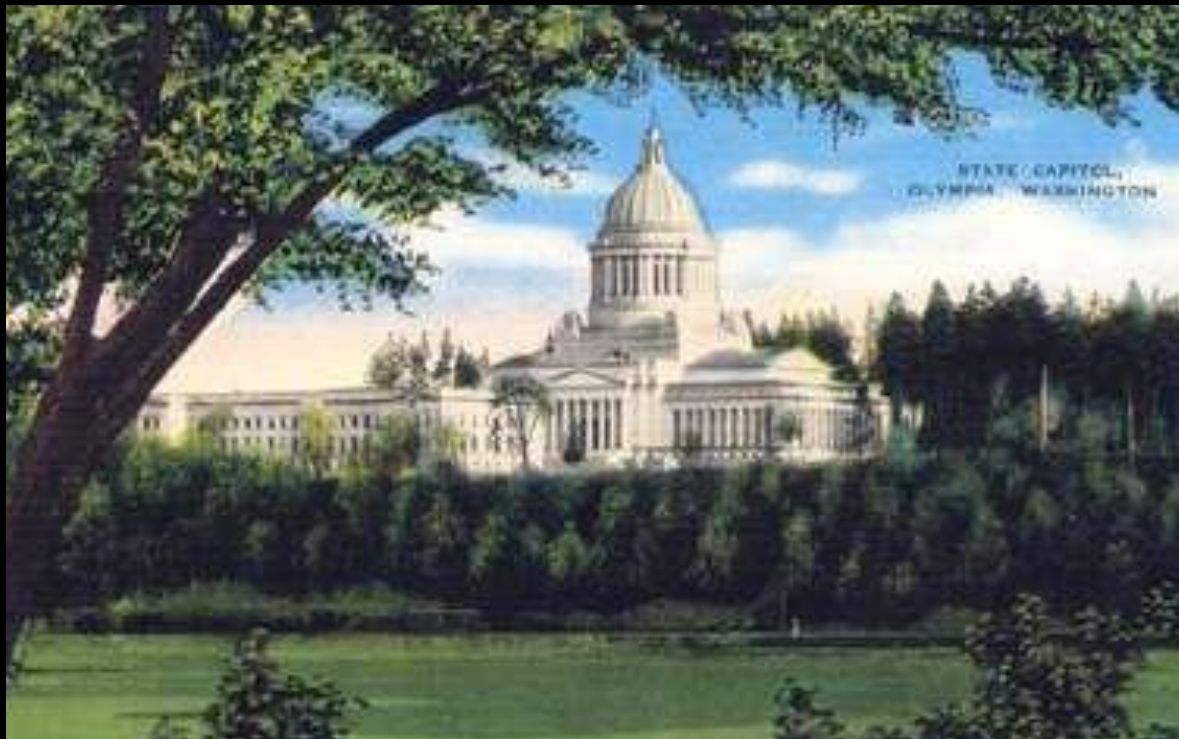


The Washington State

# Department of Archaeology & Historic Preservation



**Lance Wollwage, PhD**  
Assistant State Archaeologist



# State Historic Preservation Office(r)

Established by the federal 1966  
Historic Preservation Act

Funded partly through the Historic  
Preservation Fund

Also established by state legislation  
RCW 27.34



# DAHP's Mission

To Preserve and Protect the  
Cultural Resources of Washington State  
For Future Generations

RCW 27.34.200



# DAHP regulates

- Archaeological sites & excavations (RCW 27.53 & WAC 25-48)
- Indian Graves & excavation (RCW 27.44)
- Care and maintenance of abandoned Cemeteries (RCW 68.60)
- Inadvertent discoveries of human remains that are not crime scenes (68.60 & 27.44)



# RCWs 27.53 & 27.44

- RCW 27.53: It is unlawful for any person or entity to knowingly and willfully alter or excavate any historic or prehistoric archaeological resource or site without a permit from DAHP
- RCW 27.44: INDIAN GRAVES AND RECORDS--burial sites, cairns, and glyptic markings located on public and private land are to be protected.

# Common archaeological resources along shorelines



Shell Midden





# Glyptic Records



Culturally Modified Tree (CMT)- historic period, Gifford Pinchot NF

Pictograph & Petroglyph Klickitat County, Columbia River



Culturally Modified Tree (CMT), Gifford Pinchot NF



# Fish weirs



Mud Bay, Thurston County

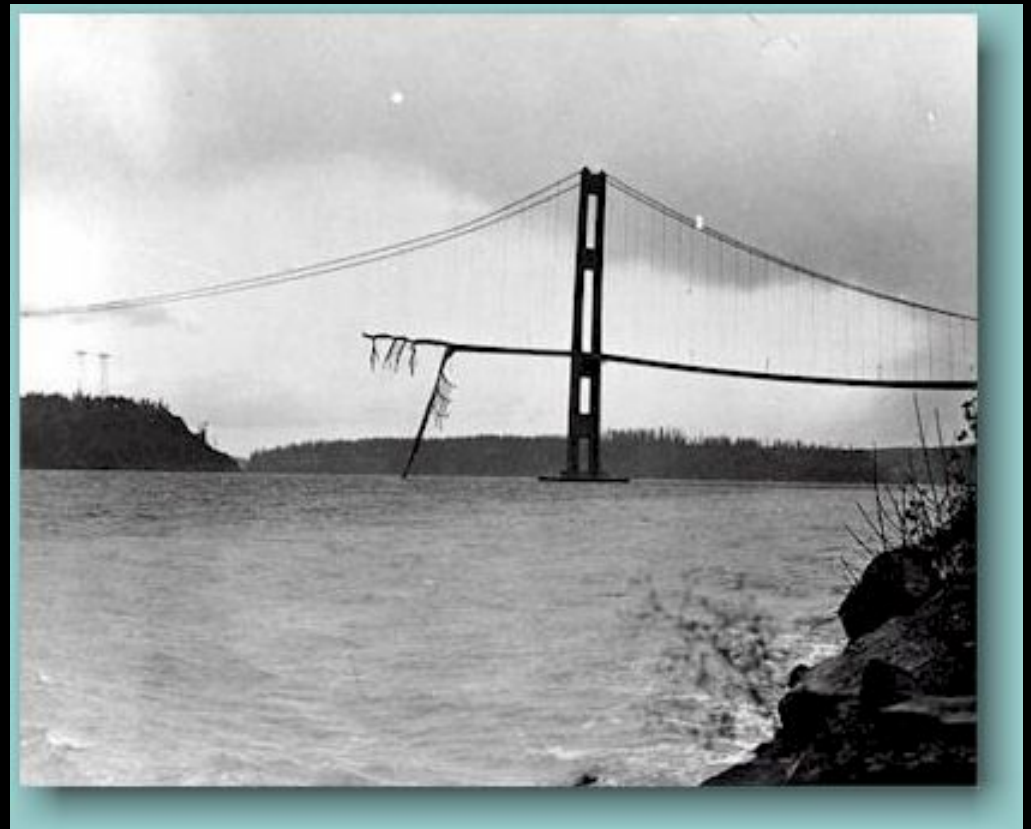


# Other types of archaeological resources near shorelines

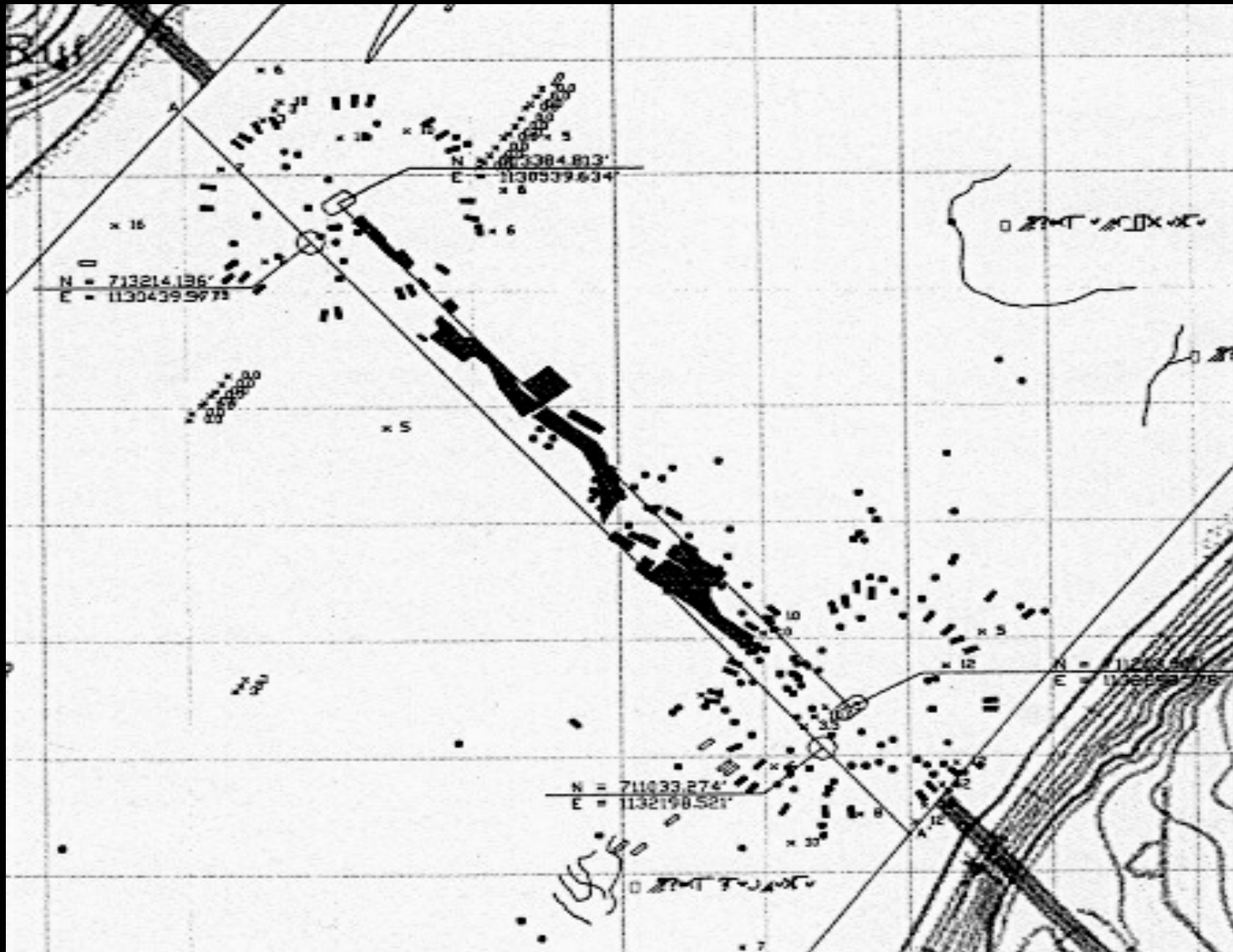
- Historic ferries and ferry landings
- Sites associated with timber extraction: docks, mills, storage facilities
- Fish processing sites (canneries)
- Military Installations
- Railroads, railroad camps
- Fur trade
- Exploration (i.e. Lewis and Clark)
- Irrigation features
- And much, much, more.

# Submerged Resources

- Shipwrecks — can be in shoreline zone but also much deeper waters
- Other submerged archaeological resources:



Galloping Gertie 1940



Galoping Gertie 2006

# Good places for cultural resources

Behind bulkheads, contemporary and old shorelines, buried shorelines (under fill), river deltas, confluences of creeks and rivers, confluences of creeks and Puget Sound, sandspits, wetland perimeters....





How does a property owner know they have a site or cemetery on their property?

By Accident (not preferred)



Beckett Point property in which human remains thought to be Native American were unearthed is cordoned off Wednesday.  
EVAN CAEL/PENINSULA DAILY NEWS

## Human bones found at site

### Archaeological discovery halts septic project

By EVAN CAEL  
PENINSULA DAILY NEWS

DISCOVERY BAY — The discovery of buried bones and bone fragments — which were determined Wednesday to be an archaeological find — has halted construction of a large on-site septic and community drain field project.

The 58 bones and fragments were discovered Sunday while Pape and Sons construction crews were digging near the shoreline at Beckett Point — which is south of Cape George on the Quimper Peninsula — in connection with the project contracted by the Jefferson County Public Utility District.

The bones were turned into Jefferson County Sheriff's Office early Tuesday.

Sheriff's Office detectives investigated the site on Tuesday and cordoned it off with yellow crime-scene tape.

The department also issued an order that work be discontinued until an archaeologist could examine the site.

"We've shut down the project out at Beckett Point," Jefferson County Sheriff's Detective Joe Nole said Wednesday.

The delay worries the PUD manager.

"I would have never expected this," PUD Manager Jim Parker said.

"Hopefully, it won't slow us down too much."

"My biggest concern is the costs." Prior to the discovery of the bones, the project was expected to cost about \$2.8 million.

Parker didn't know how delay might affect the overall cost of the project, which was originally expected to be completed in the fall.

TURN TO REMAINS/A5

# Instead...

- Require surveys/archaeological work before the projects starts; SMA and SEPA allow local governments (lead agencies) to prevent damage to sites during development by requiring surveys and data gathering in advance of the project
- Local governments have most authority in local permitting process or administering the SEPA or SMP review
  - DAHP makes recommendations to local governments when they seek our opinion
  - State laws only provide for after-the-fact punishment, not pre-construction protocols

## We recommend...

- Building archaeological consideration into normal permitting and planning process, as with other environmental factors
- Include *clear timelines* so all parties know what is expected and how long process will take
- Making the process as straightforward as possible, giving certainty to the development community
- Ensuring the process conforms with RCW 27.53, 27.44 & cemetery statutes

# Planning Resources from DAHP

- We keep the data:
  - National Register Listed Properties
  - Archaeological sites and Cemeteries
  - Survey reports
- GIS based maps of known sites and historic properties
- GIS based survey layers
- WISAARD online [www.dahp.wa.gov](http://www.dahp.wa.gov)



Call DAHP anytime for questions,  
concerns, etc.

Lance Wollwage, Assistant State Archaeologist, (360) 586-3536

[www.dahp.wa.gov](http://www.dahp.wa.gov)