

Proposed Towlane Changes - San Francisco

Because of a recent change in the San Francisco Vessel Traffic Separation (VTS) Scheme Northern Approach boundary points, our current 2015 towlane does not align with these new points.

The current two lane coordinates are:

Pt.	GPS Positioning		Description
1	375725	1230450	Connects to Pt. 5 Chart #10 S. outside entrance to towlane
2	375860	1230235	Connects to Pt. 6 Chart #10 S. inside entrance to towlane

Current 2015 crabber towlanes are shown on [page 2](#) and the San Francisco VTS is on [page 3](#).

Proposed Change

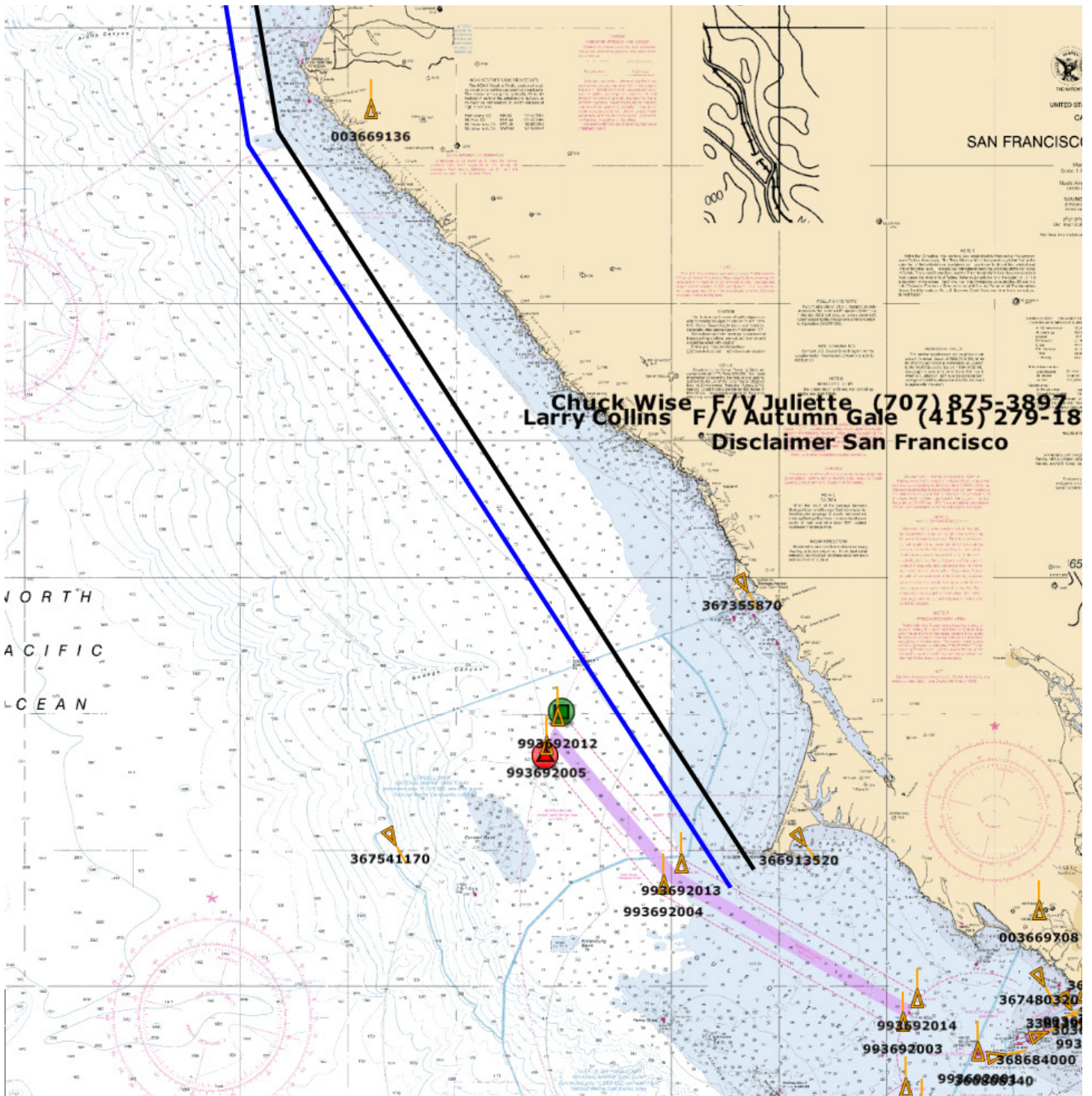
A change in the towlanes has been proposed to align the lanes with this new VTS approach. The new proposed two lane coordinates are:

Pt.	GPS Positioning		Description
1	380692	1232182	Connects to Pt. 5 Chart #10 S. outside entrance to towlane
2	381014	1232029	Connects to Pt. 6 Chart #10 S. inside entrance to towlane

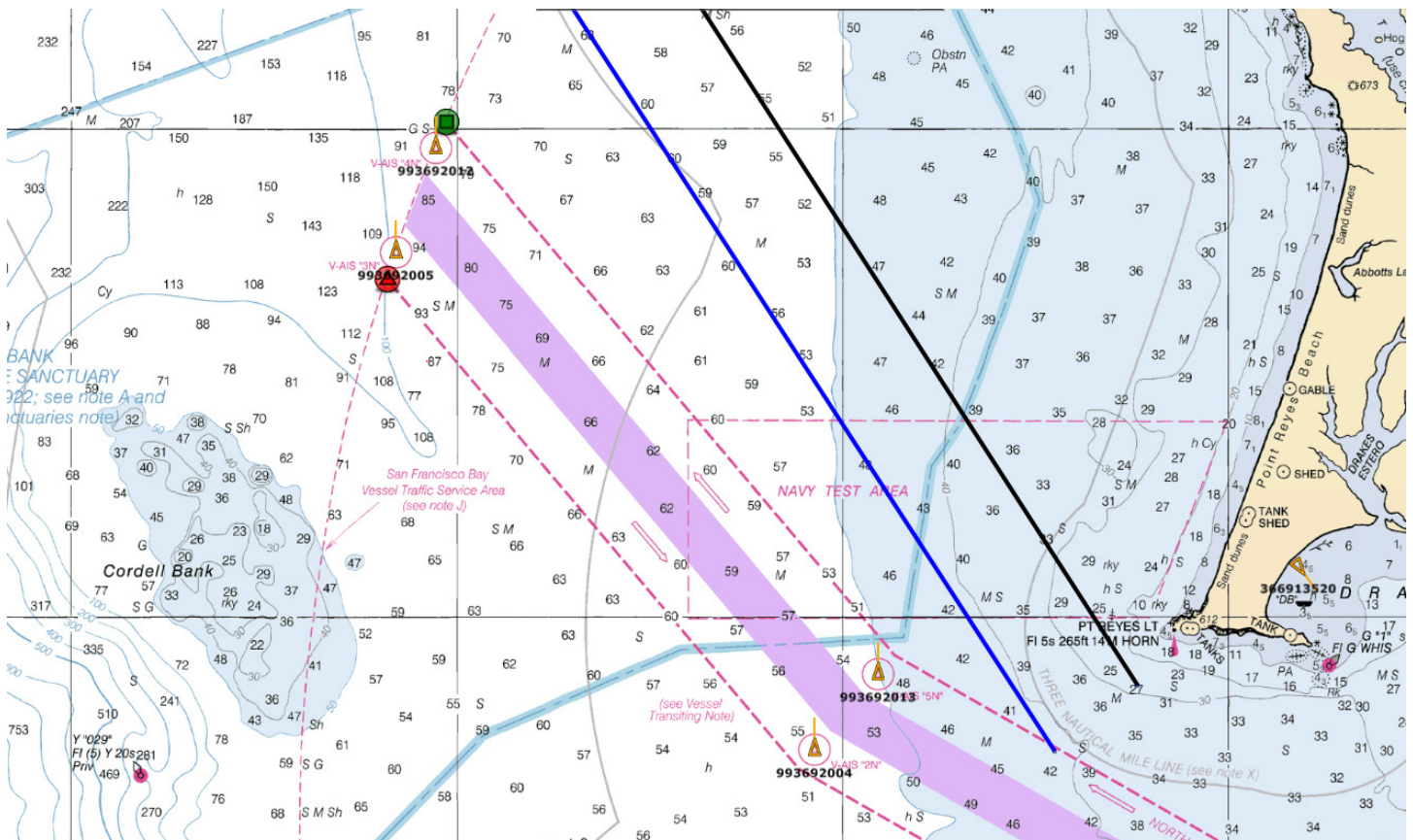
Proposed changes to crabber towlanes are shown on [page 4](#) and changes for the San Francisco VTS are on [page 5](#).

The proposed lane change will be reviewed by commercial crab industry members and will be considered for adoption at the March 2016 meeting.

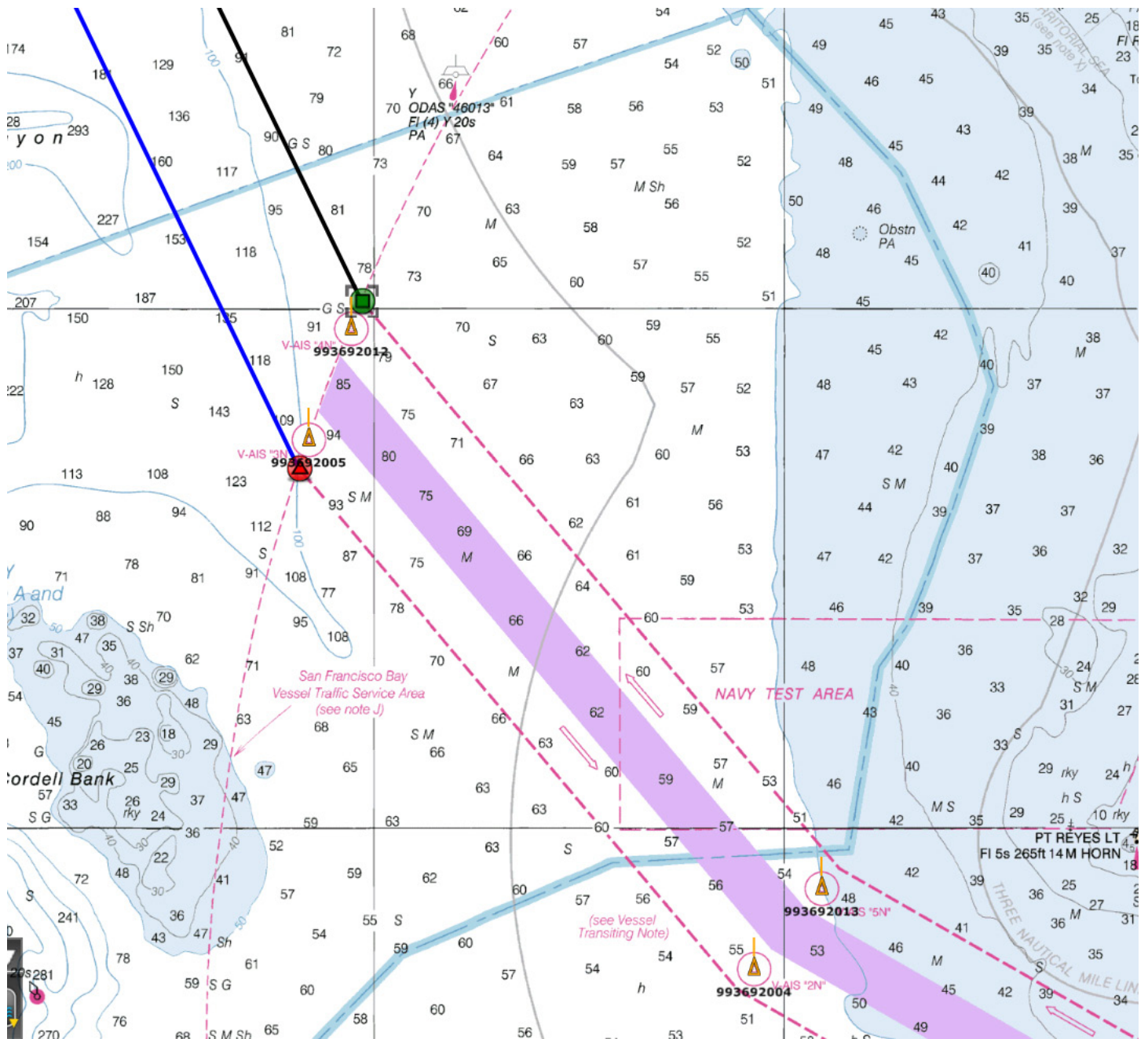
Current Crabber Towlanes



Current San Francisco VTS



Proposed Changes to Crabber Towlanes



Proposed Changes to the San Francisco VTS

