

*Science, Service, Stewardship*



# Current Regulatory Landscape for Shellfish Aquaculture in Washington

Laura Hoberecht, PhD,  
Aquaculture Coordinator

**NOAA  
FISHERIES  
SERVICE**

NOAA

# Outline

- Shellfish Interagency Permit (SIP) Team
- Existing Permit Process
- Current Events
- SIP Phase II



geoduck seed

# Shellfish Interagency Permitting Team

- Implementation
- Purpose
- Who we are
- What we've done



## WASHINGTON SHELLFISH INITIATIVE

The Washington State Shellfish Initiative is a convergence of the National Oceanic and Atmospheric Administration's (NOAA) National Shellfish Initiative and the State's interest in promoting a critical clean water industry. While the initiative supports Governor Gregoire's goal of a "dig-able" Puget Sound by 2020, it also encompasses the extraordinary value of shellfish resources on the coast. As envisioned, the initiative will protect and enhance a resource that is important for jobs, industry, citizens and tribes.

### Overview

Washington State is taking additional action to protect and enhance shellfish resources. This effort supports the long-term goal of abundant shellfish resources for Washington's residents and Native American tribes, as well as a thriving and healthy shellfish aquaculture industry. As an outcome of the 2007 treaty rights settlement, many Puget Sound tribes are undertaking shellfish aquaculture as a means of enhancing shellfish resources for cultural and economic gain.

We recognize and respect that shellfish aquaculture and commercial and tribal harvest of wild shellfish resources are water-dependent uses that rely on excellent water quality. Shellfish also can help filter and improve the quality of our marine waters thereby being part of the solution to restore and preserve the health of endangered waters. We can have healthy marine waters and productive shellfish beds for a growing industry, Native American tribes and for all the citizens of Washington.

The Puget Sound Partnership has targeted a net increase from 2007 to 2020 of 10,800 harvestable shellfish acres, which includes 7,000 acres where harvest is currently prohibited in Puget Sound. However, the recent shellfish downgrade in Sanish Bay is a reminder of the constant vigilance needed by landowners, businesses and local, state, federal and tribal governments to protect and restore shellfish beds. Such efforts also are required on the coast where there is considerable opportunity to enhance shellfish resources.

To restore and expand shellfish resources, Washington must renew its protection, restoration and enhancement efforts. These efforts will pay off in increased recreation, additional clean water jobs, and a healthier Puget Sound and coastal marine waters.

### Shellfish: Jobs and Economic Opportunity

Shellfish are critical to the health of Washington's marine waters and the state's economy. Washington leads the country in production of farmed clams, oysters and mussels with an annual value of over \$107 million. Washington shellfish growers directly and indirectly employ over 3,200 people and provide an estimated total economic contribution of \$270 million. Surveys from the early 2000's indicate shellfish growers are the largest private employer in Pacific County and the second largest in Mason County. In just those two counties, they generate over \$27 million annually in payroll. In addition, there is ceremonial and subsistence harvest in Puget Sound and coastal waters that tribes consider invaluable and unquantifiable.

Bivalves coming from Washington's cool clean waters are prized as some of the best in the world. This reputation has ensured that domestic and international demand for them has long exceeded

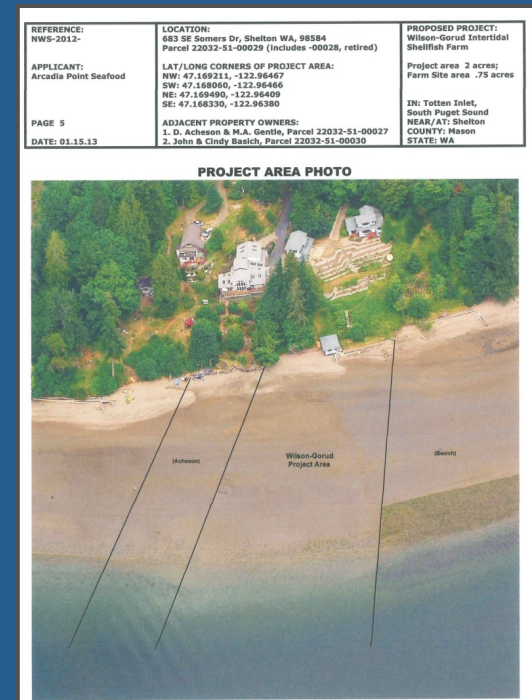


# SIP Products

- Flow chart & narrative
- JARPA guidance
- Pilot projects
- Permit Table
- Map/Drawing Specifications



Olympia oyster  
restoration



New farm application

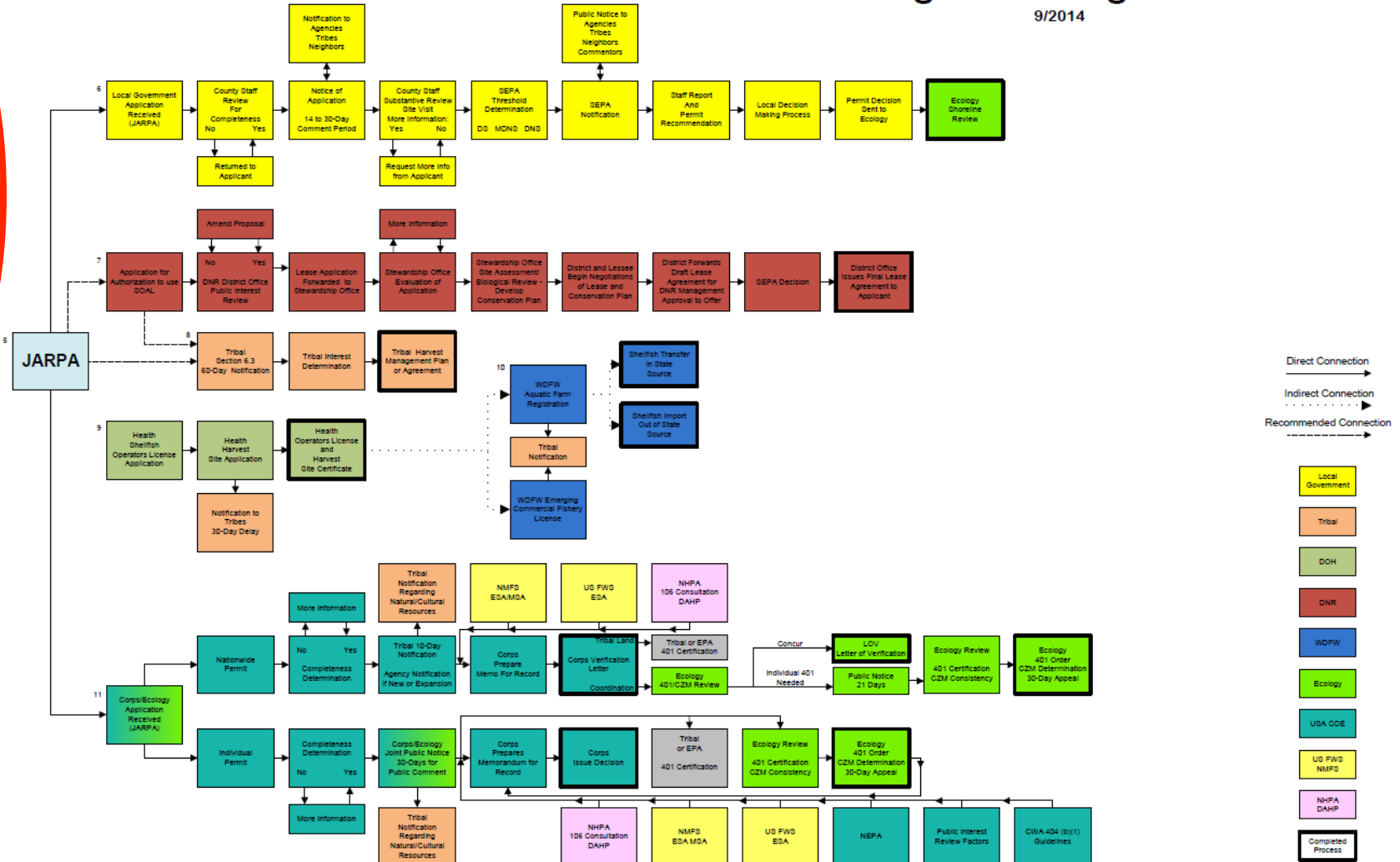
# Existing Permit Process

## Existing Permitting Processes

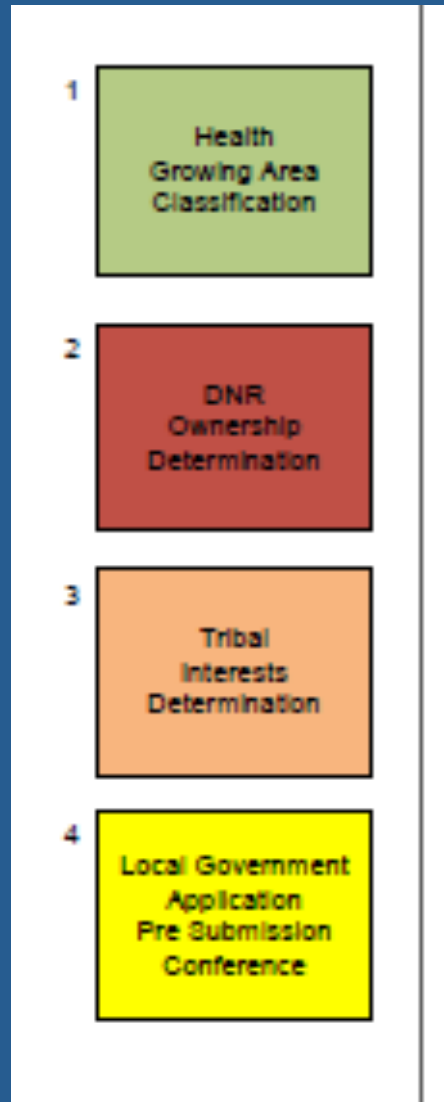
9/2014

Early Inquiries: These are items to check prior to starting the application process, as they might affect the subsequent permitting path.

- 1 Health Growing Area Classification
- 2 DNR Ownership Determination
- 3 Tribal Interests Determination
- 4 Local Government Application Pre-Submission Conference



# Early Inquiries



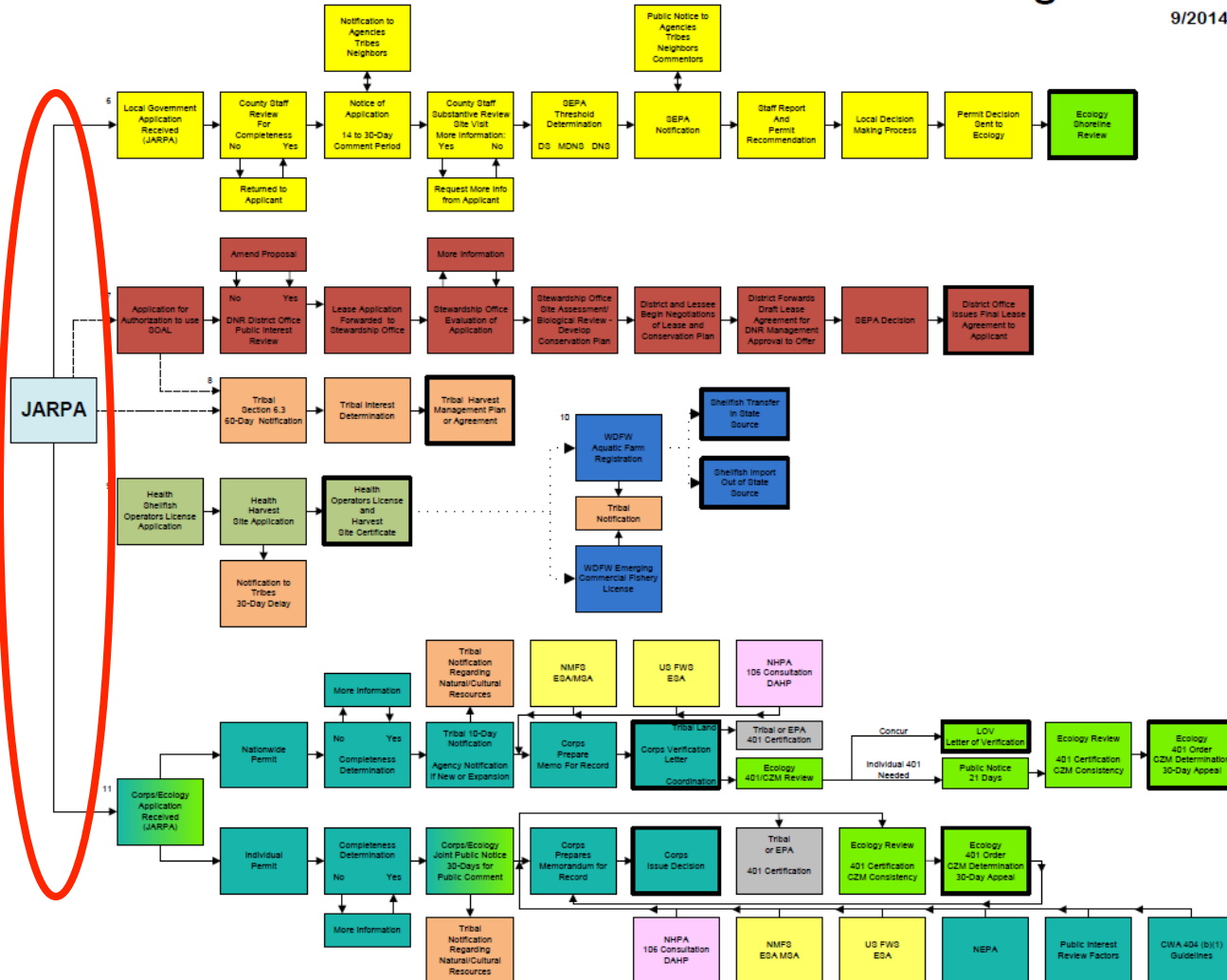
# Existing Permit Process

## Existing Permitting Processes

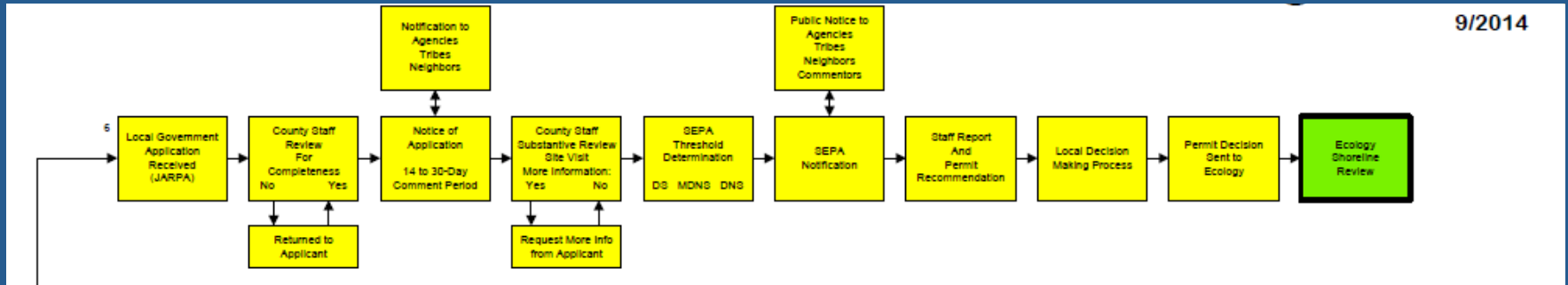
9/2014

Early Inquiries:  
These are items to check prior to starting the application process, as they might direct the subsequent permitting path.

- 1 Health Growing Area Classification
- 2 DNR Ownership Determination
- 3 Tribal Interests Determination
- 4 Local Government Application Pre Submission Conference

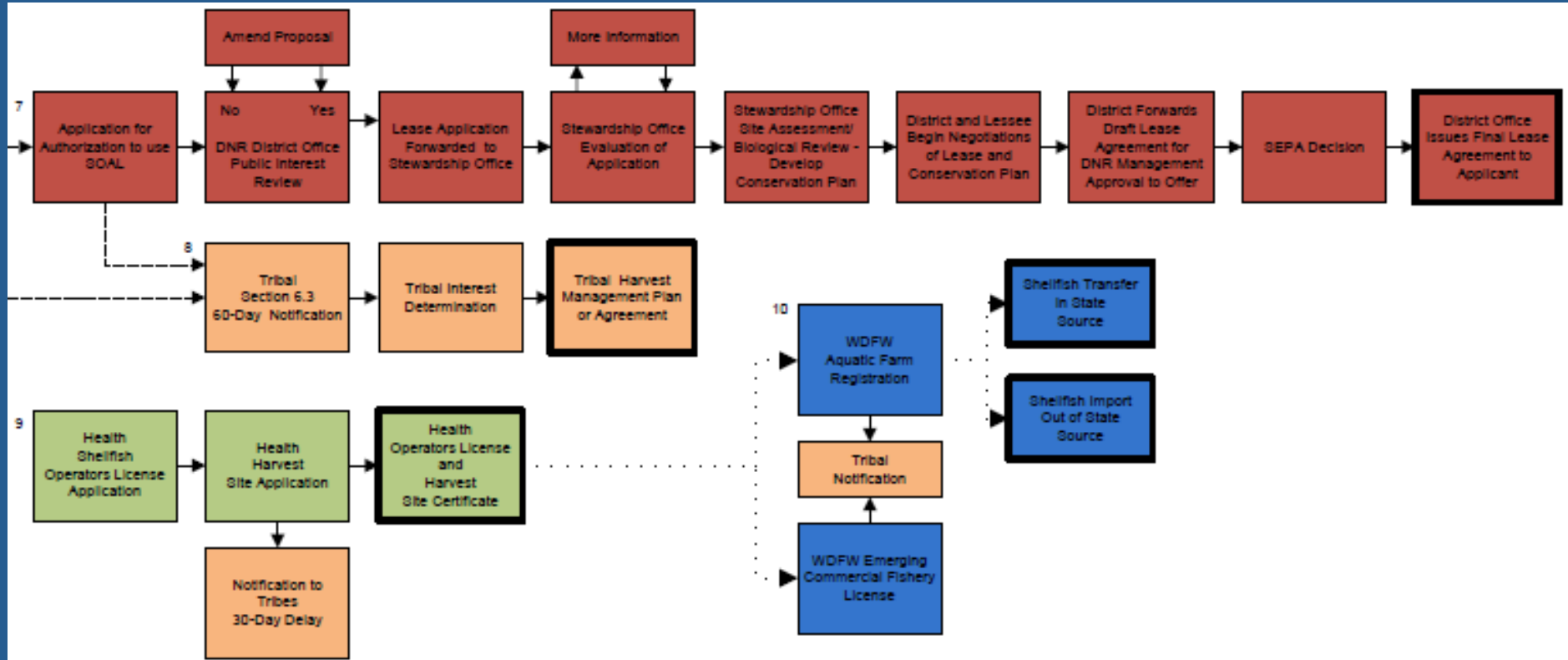


# Local Government: SDP/CUP

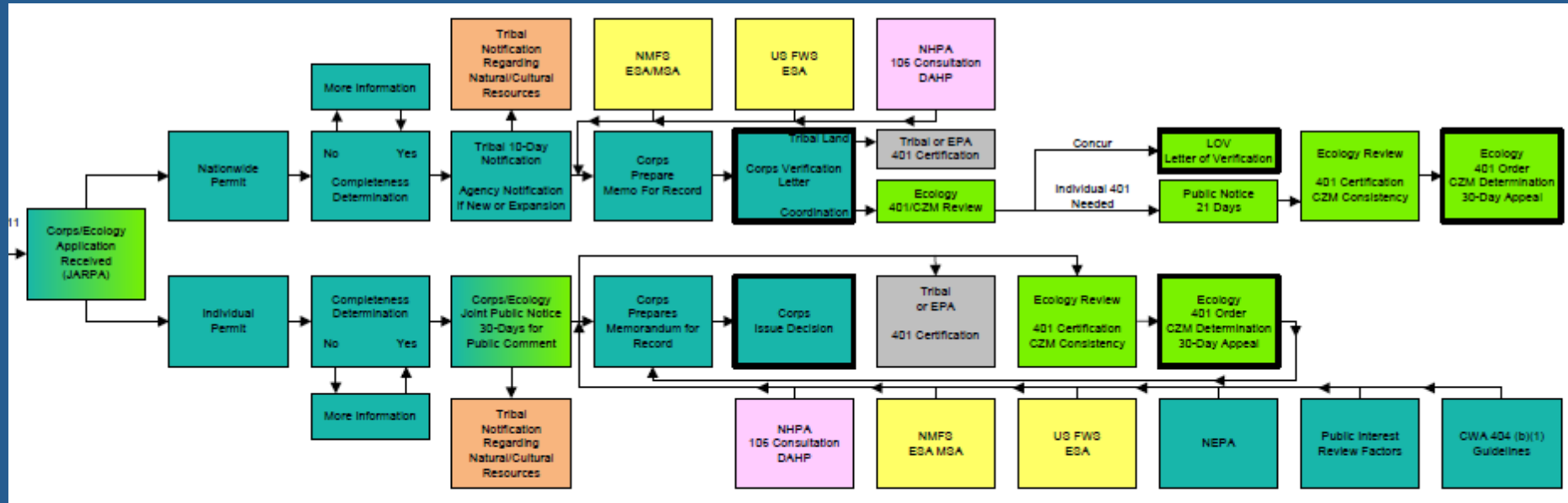




# State/Tribes



# Federal



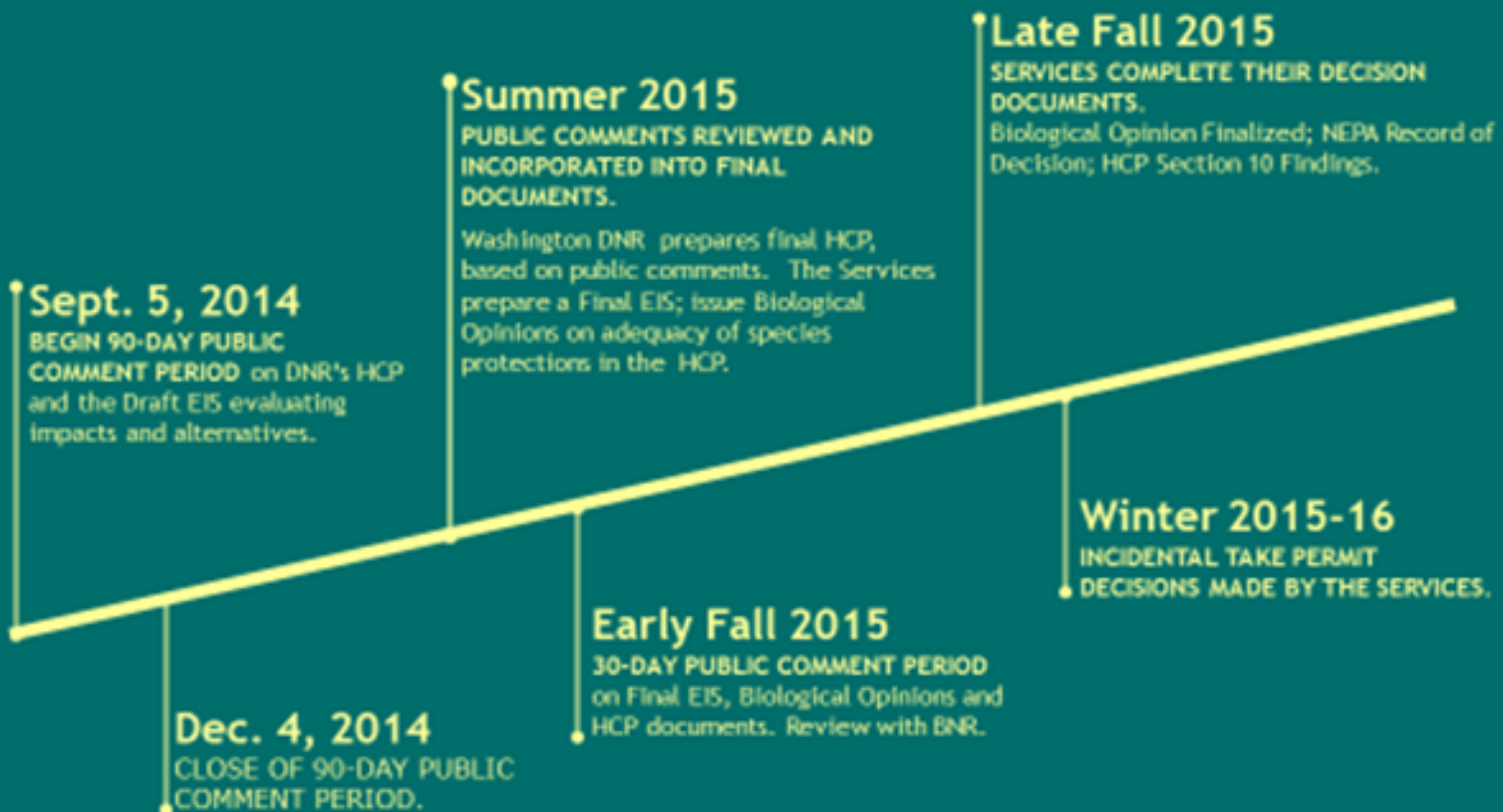
# Current Events: Local Government

- Comprehensive SMP updates
- Provisions for new geoduck aquaculture
  - CUP
- New aquaculture with shoreline permit
  - Mitigation sequence: avoid, minimize, mitigate
- Ecology provides technical assistance



geoduck farm with tubes (year 1-2)

# Current Events: State DNR Aquatic Lands HCP



# Current Events Federal: Programmatic Consultation

- Activity based
- Not tied to NWP48
- Conditions
- Tech Team
- Timeline



geoduck farm (year 2-10)



# SIP Phase II

- Updated WSI
- Report on Phase I
- Outreach
- Working groups



geoduck harvest



# Acknowledgements

- Perry Lund & Cedar Bouta, Ecology
- Blain Reeves & Dave Palazzi, DNR
- Matt Bennett, ACOE
- SIP Team: Tribes, Local Government, State and Federal Agencies
- <http://www.ecy.wa.gov/programs/sea/aquaculture/sip.htm>

