

Pick the hairy shore crab (HEOR)

A.

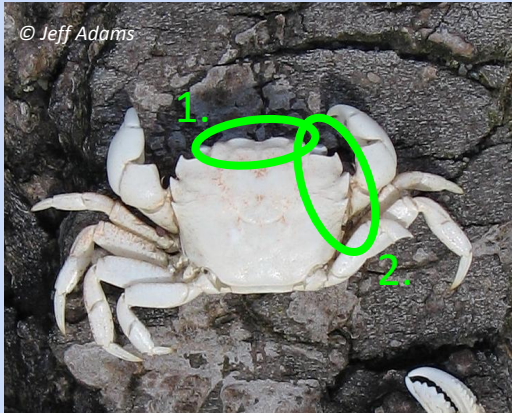


B.



Hairy shore crab (HEOR)

A.



Correct Answer: A

A few features in this photo distinguish the hairy shore crab (HEOR) from the purple shore crab (HENU).

1. Two rostral bumps are visible on the hairy shore crab, whereas the rostrum of the purple shore crab is more flat
2. HENU marginal teeth are rounded inward with smaller gaps between each while HEOR marginal teeth are forward facing.

Purple shore crab (HENU)

B.



Pick the hairy shore crab (HEOR)

A.



B.



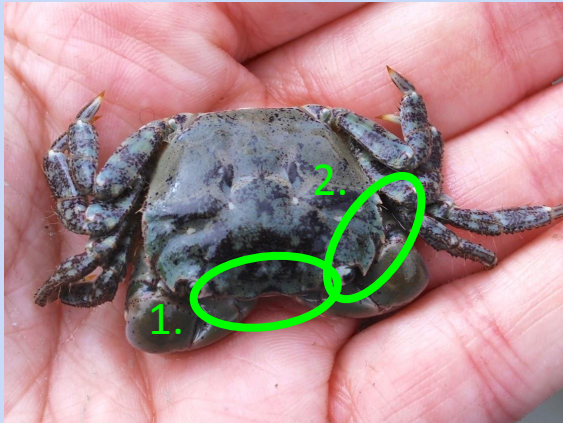
Purple shore crab (HENU)

A.



Hairy shore crab (HEOR)

B.



Correct Answer: B

A few features in this photo distinguish the hairy shore crab (HEOR) from the purple shore crab (HENU).



1. Two rostral bumps are visible on the hairy shore crab, whereas the rostrum of the purple shore crab is more flat
2. HENU marginal teeth are rounded inward with smaller gaps between each while HEOR marginal teeth are forward facing.



Pick the hairy shore crab (HEOR)

A.



B.



Purple shore crab (HENU)

A.



Hairy shore crab (HEOR)

B.



Correct Answer: B

A few features in this photo distinguish the hairy shore crab (HEOR) from the purple shore crab (HENU).



1. Two rostral bumps are visible on the hairy shore crab, whereas the rostrum of the purple shore crab is more flat
2. HENU marginal teeth are rounded inward with smaller gaps between each while HEOR marginal teeth are forward facing.



Pick the hairy shore crab (HEOR)

A.



B.



Hairy shore crab (HEOR)

A.



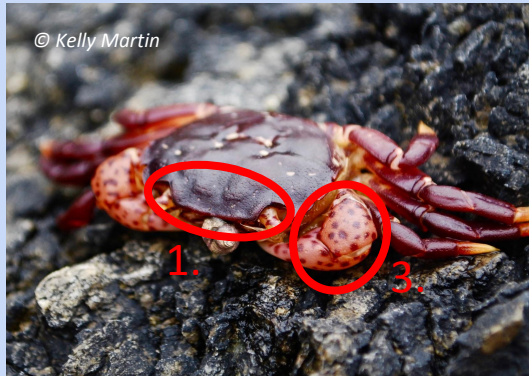
Correct Answer: A

A few features in this photo distinguish the hairy shore crab (HEOR) from the purple shore crab (HENU).

1. Two rostral bumps are visible on the hairy shore crab, whereas the rostrum of the purple shore crab is more flat
2. HENU marginal teeth are rounded inward with smaller gaps between each while HEOR marginal teeth are forward facing.
3. HENU often have prominent spots on their claws, while HEOR do not.

Purple shore crab (HENU)

B.



Pick the hairy shore crab (HEOR)

A.



B.



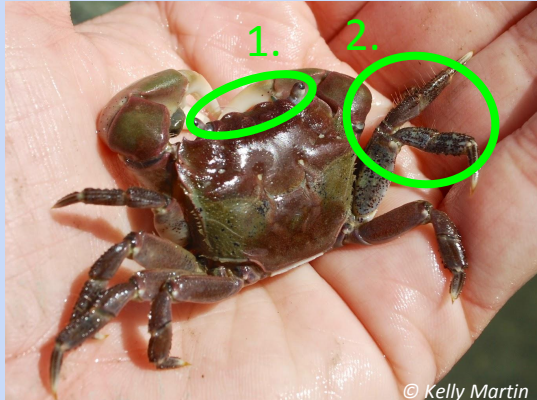
Purple shore crab (HENU)

A.



Hairy shore crab (HEOR)

B.



Correct Answer: B

A few features in this photo distinguish the hairy shore crab (HEOR) from the purple shore crab (HENU).

1. Two rostral bumps are visible on the hairy shore crab, whereas the rostrum of the purple shore crab is more flat
2. HEOR has hairs on walking legs, none on HENU
3. HENU marginal teeth are rounded inward with smaller gaps between each while HEOR marginal teeth are forward facing.

Pick the hairy shore crab (HEOR)

A.



B.



Purple shore crab (HENU)

A.



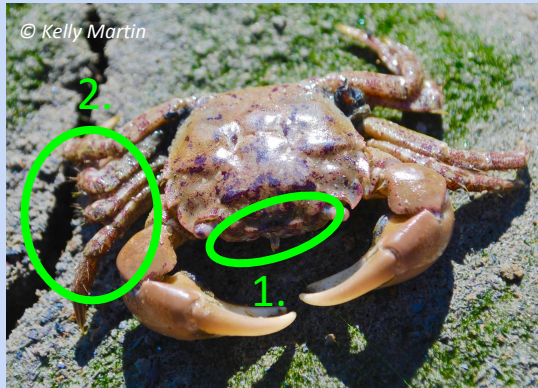
Correct Answer: B

A few features in this photo distinguish the hairy shore crab (HEOR) from the purple shore crab (HENU).

1. Two rostral bumps are visible on the hairy shore crab, whereas the rostrum of the purple shore crab is more flat
2. HEOR has hairs on walking legs, none on HENU
3. HENU marginal teeth are rounded inward with smaller gaps between each while HEOR marginal teeth are forward facing.
4. HENU have prominent spots on their claws while HEOR do not.

Hairy shore crab (HEOR)

B.



Pick the hairy shore crab (HEOR)

A.



© Emily Grason

B.



© Emily Grason

Hairy shore crab (HEOR)

A.



Correct Answer: A

Two features in this photo distinguish the hairy shore crab (HEOR) from the purple shore crab (HENU).

1. 2 pronounced rostral bumps on the HEOR. HENU rostrum is noticeably flatter.
2. Marginal teeth more forward facing on HEOR. HENU marginal teeth are rounded inward with smaller gaps between each.

Purple shore crab (HENU)

B.



Pick the hairy shore crab (HEOR)

A.



B.



Hairy shore crab (HEOR)

A.



Correct Answer: A

Two features in this photo distinguish the hairy shore crab (HEOR) from the purple shore crab (HENU).

1. 2 pronounced rostral bumps on the HEOR. HENU rostrum is noticeably flatter.
2. Marginal teeth more forward facing on HEOR. HENU marginal teeth are rounded inward with smaller gaps between each.

Purple shore crab (HENU)

B.



Pick the hairy shore crab (HEOR)

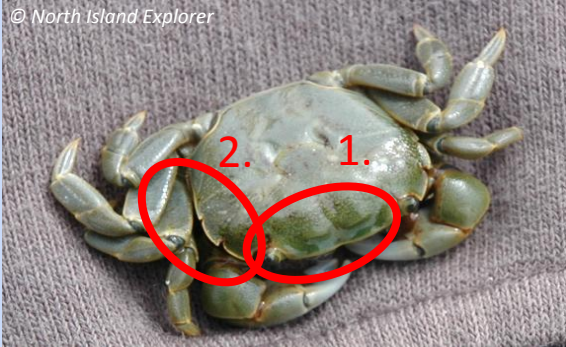
A.



B.



Purple shore crab (HENU)



A.



Correct Answer: B

A few features in this photo distinguish the hairy shore crab (HEOR) from the purple shore crab (HENU).

1. The rostrum of the purple shore crab is almost completely flat, whereas HEOR has 2 rostral bumps.
2. Marginal teeth on HENU are rounded inward, whereas HEOR marginal teeth are facing forward.
3. HEOR has hairs on walking legs, none on HENU

Hairy shore crab (HEOR)



B.



Pick the hairy shore crab (HEOR)

A.

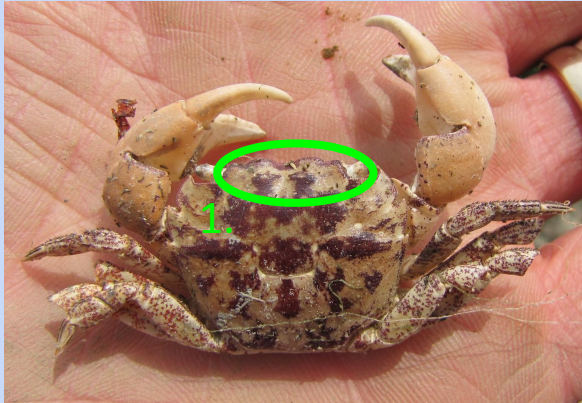


B.



Hairy shore crab (HEOR)

A.



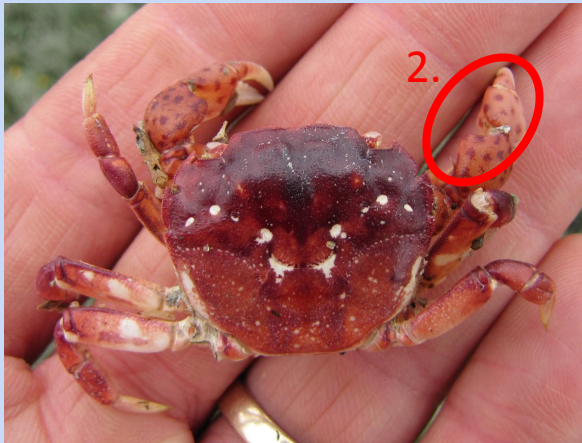
Correct Answer: A

Two features in this photo distinguish the hairy shore crab (HEOR) from the purple shore crab (HENU).

1. Two rostral bumps are visible on the hairy shore crab, whereas the rostrum of the purple shore crab is more flat.
2. Large polka dots on claws distinguish HENU, while HEOR has no large dots. (However, these are not always present on HENU so look for other features too)

Purple shore crab (HENU)

B.



*Though not clearly visible in this photo, note differences in marginal teeth. HEOR: facing forward. HENU: curved inward.

Pick the hairy shore crab (HEOR)

A.



© Greg Jensen

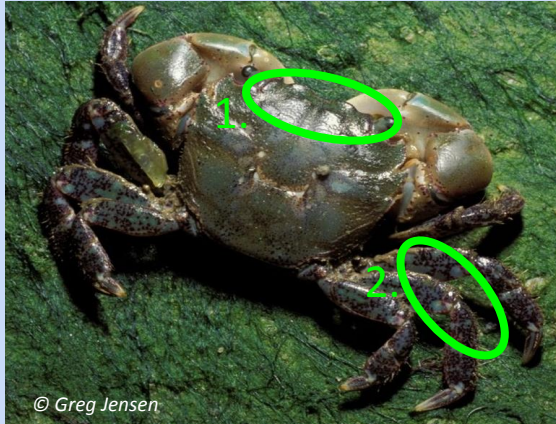
B.



© Jeff Adams

Hairy shore crab (HEOR)

A.



Correct Answer: A

A few features in this photo distinguish the hairy shore crab (HEOR) from the purple shore crab (HENU).

1. Two rostral bumps are visible on the hairy shore crab, whereas the rostrum of the purple shore crab is more flat.
2. HEOR has hairs on walking legs, none on HENU
3. HENU marginal teeth are rounded inward with smaller gaps between each while HEOR marginal teeth are forward facing.

Purple shore crab (HENU)

B.



Pick the hairy shore crab (HEOR)

A.



B.



Purple shore crab (HENU)

A.



X

Correct Answer: B

A few features in this photo distinguish the hairy shore crab (HEOR) from the purple shore crab (HENU).

1. Two rostral bumps are visible on the hairy shore crab, whereas the rostrum of the purple shore crab is more flat
2. HEOR has hairs on walking legs, none on HENU
3. HENU marginal teeth are rounded inward with smaller gaps between each while HEOR marginal teeth are forward facing.

Hairy shore crab (HEOR)

B.



✓

Pick the hairy shore crab (HEOR)

A.

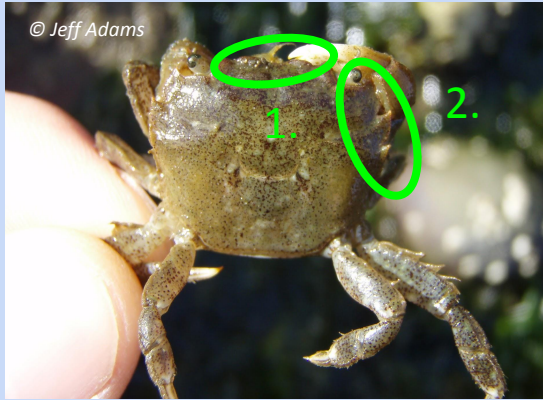


B.



Hairy shore crab (HEOR)

A.



© Jeff Adams



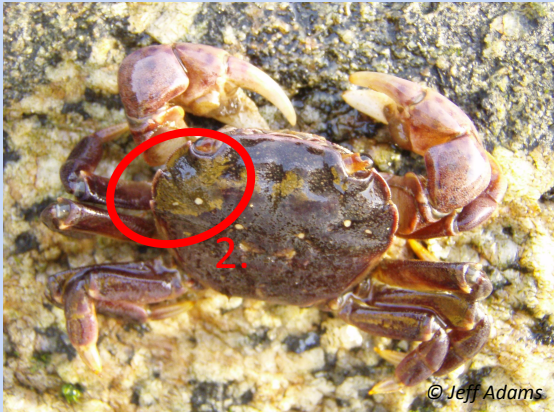
Correct Answer: A

A few features in this photo distinguish the hairy shore crab (HEOR) from the purple shore crab (HENU).

1. Two rostral bumps are visible on the hairy shore crab, whereas the rostrum of the purple shore crab is more flat
2. HENU marginal teeth are rounded inward with smaller gaps between each while HEOR marginal teeth are forward facing.

Purple shore crab (HENU)

B.



© Jeff Adams

