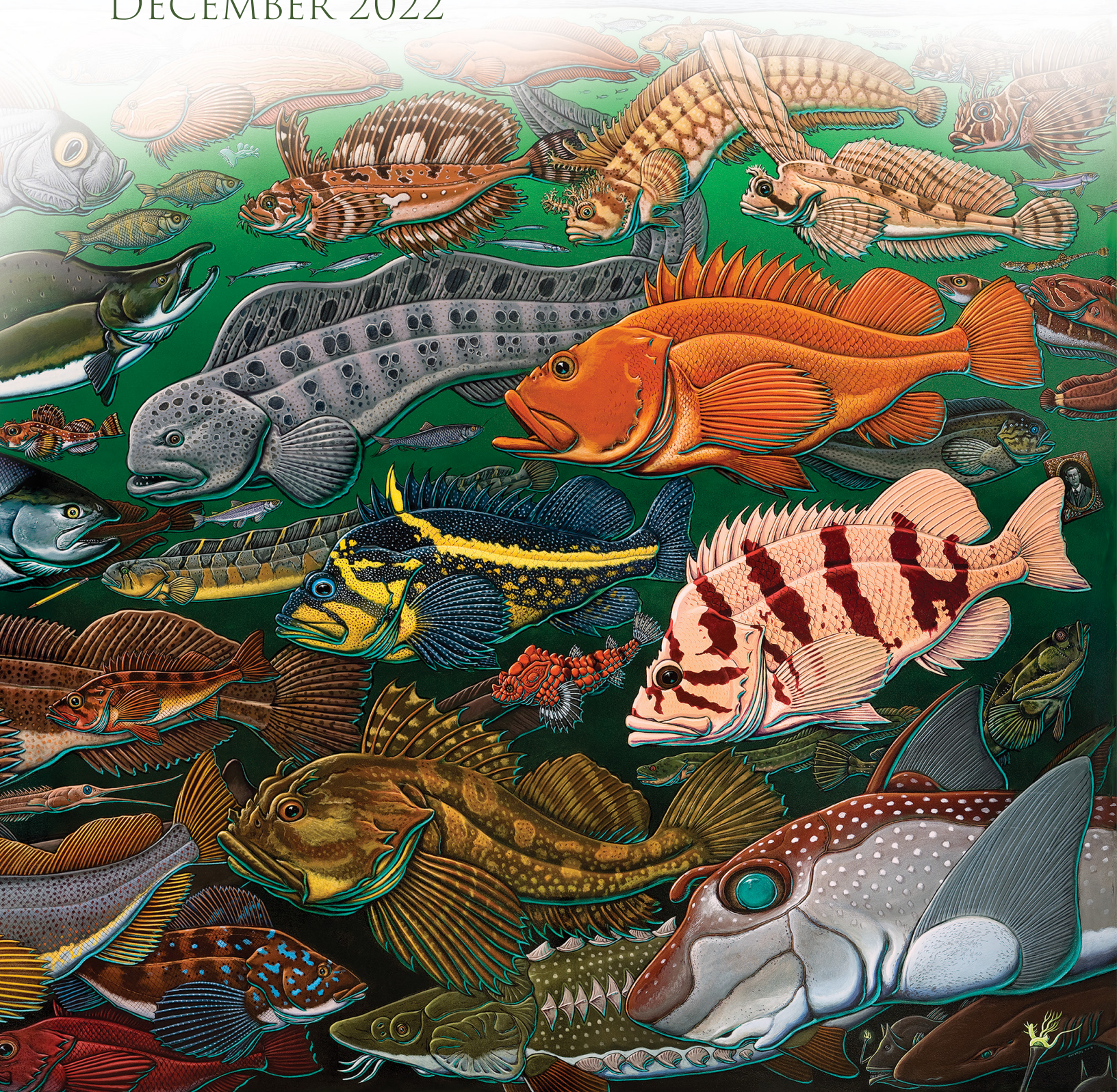


# WASHINGTON SEA GRANT STAFF

DECEMBER 2022





**RUSSELL CALLENDER**  
(he/him)  
**Director**  
Seattle  
[wrc4@uw.edu](mailto:wrc4@uw.edu)  
206.543.6600



**CARRIE GARRISON-LANEY**  
(she/her)  
**Coastal Hazards Specialist**  
Seattle  
Tsunamis, coastal hazards assessment and mitigation, PMEL liaison  
[cegl@uw.edu](mailto:cegl@uw.edu)  
206.685.8302

## OUTREACH



**JEFF ADAMS**  
(he/him)  
**Marine Ecologist; Marine Ecology Team Lead**  
Bremerton  
Marine and freshwater ecology, water quality, aquatic invasive species, volunteer training  
[jaws@uw.edu](mailto:jaws@uw.edu)  
360.229.9398



**EMILY GRASON**  
(she/her)  
**Marine Ecologist**  
Seattle  
Estuarine and marine ecology, aquatic invasive species, volunteer training  
[egrason@uw.edu](mailto:egrason@uw.edu)  
206.616.3368



**AARON BARNETT**  
(he/him)  
**Boating Program Specialist**  
Port Townsend  
Pollution prevention and vessel and marine facilities education  
[aaronb5@uw.edu](mailto:aaronb5@uw.edu)  
206.616.8929



**JENNA KEETON**  
(she/her)  
**Fisheries Specialist**  
Seattle  
Seafood marketing, sustainable fisheries management and economics, workforce development  
[keetonj@uw.edu](mailto:keetonj@uw.edu)  
206.543.7009



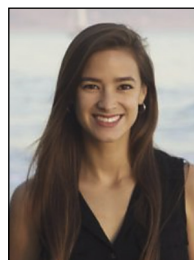
**JACKSON BLALOCK**  
(he/him)  
**Community Engagement Specialist**  
South Bend  
Community engagement, coastal hazards resilience, ecosystem-based management  
[jackbla@uw.edu](mailto:jackbla@uw.edu)  
704.4  
18.4179



**TERI KING**  
(she/her)  
**Aquaculture and Marine Water Quality Specialist; Aquaculture and Water Quality Team Lead**  
Shelton  
Technical assistance for aquaculture, seafood safety, water quality, harmful algal blooms, temperature extremes  
[guatema@uw.edu](mailto:guatema@uw.edu)  
360.432.3054



**MEG CHADSEY**  
(She/Her)  
**Ocean Acidification Specialist**  
Seattle  
Ocean acidification, PMEL liaison  
[mchadsey@uw.edu](mailto:mchadsey@uw.edu)  
206.616.1538



**MICHELLE LEPORI-BUI**  
(she/her)  
**Marine Water Quality Specialist**  
Seattle  
Phytoplankton, harmful algal blooms, marine water quality  
[mdtlb@uw.edu](mailto:mdtlb@uw.edu)  
206.543.0820



**KEVIN DECKER**  
(he/him)  
**Coastal Economist; Coastal Resilience Team Lead**  
Olympia  
Regional economic development, coastal economies and resilience  
[kadecker@uw.edu](mailto:kadecker@uw.edu)  
206.685.0864



**IAN MILLER**  
(he/him)  
**Coastal Hazards Specialist**  
Port Angeles  
Coastal geomorphology, oceanography, coastal hazards assessment and mitigation  
[immiller@uw.edu](mailto:immiller@uw.edu)  
360.417.6460



**NICOLE NAAR**  
 (she/her)  
**Social Science and Education Specialist**  
 Seattle  
 Anthropology, aquaculture, ecosystem-based management; facilitation, K-12 curriculum  
[nanaar@uw.edu](mailto:nanaar@uw.edu)  
 206.543.7933



**MELISSA POE**  
 (she/her)  
**Social Scientist; Integrated Knowledge and Education Team Lead**  
 Seattle  
 Community-based participatory action research, cultural-ecosystems, Indigenous and coastal food systems  
[mpoe@uw.edu](mailto:mpoe@uw.edu)  
 206.685.8209



**ALEX STOTE**  
 (she/her)  
**Crab Team Coastal Specialist**  
 Seattle  
 Shellfish aquaculture, sustainable food systems, science communication  
[stote@uw.edu](mailto:stote@uw.edu)  
 206.685.8274

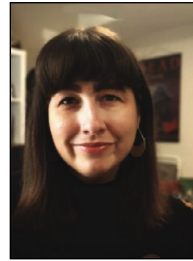


**MAILE SULLIVAN**  
 (she/her)  
**Education Specialist**  
 Seattle  
 K-12 education and programming, Orca Bowl and NOAA Science Camp coordination  
[mailesul@uw.edu](mailto:mailesul@uw.edu)  
 206.543.2822



**BRIDGET TROSIN**  
 (she/her)  
**Coastal Policy Specialist; Fisheries and Boating Team Lead**  
 Bellingham  
 Marine policy and planning, pollution prevention, marine facilities education, coastal hazards  
[bemmett@uw.edu](mailto:bemmett@uw.edu)  
 773.203.2922

## COMMUNICATIONS



**ASHLI BLOW**  
 (she/her)  
**Communications Specialist**  
 Seattle  
[ashlib@uw.edu](mailto:ashlib@uw.edu)  
 206.221.6134



**SAMANTHA LARSON**  
 (she/her)  
**Science Writer**  
 Seattle  
[larsonsa@uw.edu](mailto:larsonsa@uw.edu)  
 206.616.9568



**ROBYN RICKS**  
 (she/her)  
**Creative Director**  
 Seattle  
[robym@uw.edu](mailto:robym@uw.edu)  
 206.685.2607



**MARYANN WAGNER**  
 (she/her)  
**Assistant Director for Communications**  
 Seattle  
[maryannb@uw.edu](mailto:maryannb@uw.edu)  
 206.616.6353

## ADMINISTRATION, RESEARCH, AND FELLOWSHIPS



**ANDREA CHATEAUBRIAND**  
(she/her)  
**Executive Assistant**  
Seattle  
[chateau@uw.edu](mailto:chateau@uw.edu)  
206.616.1427



**KAY MORRILL-MCCLURE**  
(they/them)  
**DEIJA and IT Lead**  
Seattle  
[kayjmmc@uw.edu](mailto:kayjmmc@uw.edu)  
206.685.0171



**KATY CURTIS**  
(she/her)  
**Assistant Director for Finance and Administration**  
Seattle  
[katy123@uw.edu](mailto:katy123@uw.edu)  
206.543.9966



**DEBORAH PURCE**  
(she/her)  
**Fellowship and Research Specialist**  
Seattle  
[dpurce@uw.edu](mailto:dpurce@uw.edu)  
206.616.5718



**TRACEY FUGAMI**  
(she/they)  
**Human Resources Manager**  
Seattle  
[fugami@uw.edu](mailto:fugami@uw.edu)  
206.616.8192



**EILEEN PUTMAN**  
(she/her)  
**Administrative Assistant**  
Seattle  
[emherman@uw.edu](mailto:emherman@uw.edu)  
206.543.6600



**KATE LITTLE**  
(she/her)  
**Deputy Director**  
Seattle  
[kalittle@uw.edu](mailto:kalittle@uw.edu)  
206.616.0151



**TRINH VO**  
(she/her)  
**Grants Manager**  
Seattle  
[trinh26@uw.edu](mailto:trinh26@uw.edu)  
206.685.2427

