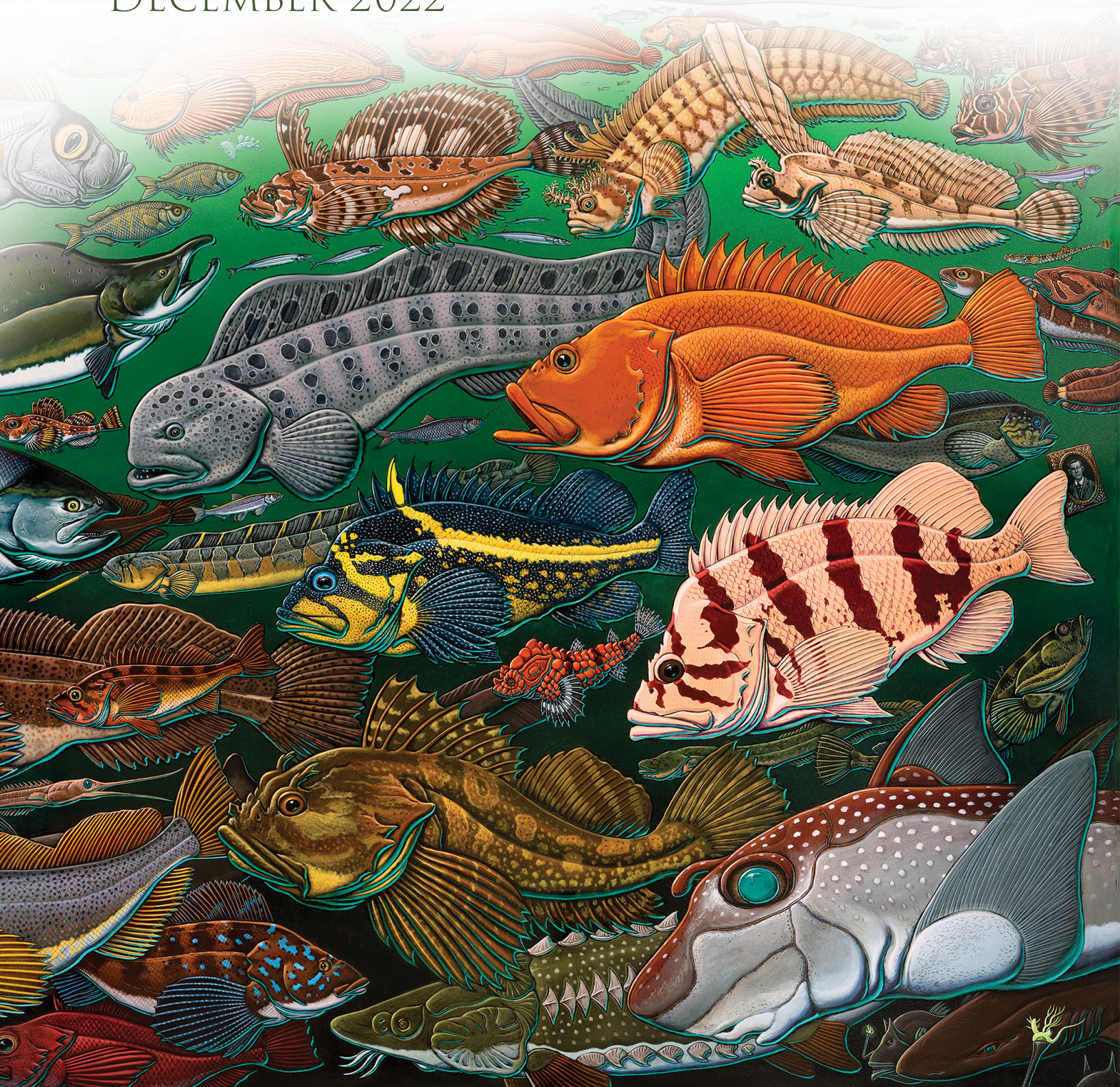


WASHINGTON SEA GRANT STAFF

DECEMBER 2022





RUSSELL CALLENDER
(he/him)
Director
Seattle
wrc4@uw.edu
206.543.6600

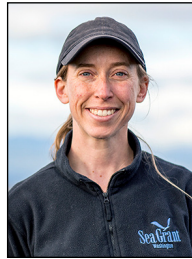


CARRIE GARRISON-LANEY
(she/her)
Coastal Hazards Specialist
Seattle
Tsunamis, coastal hazards assessment and mitigation, PMEL liaison
cegl@uw.edu
206.685.8302

OUTREACH



JEFF ADAMS
(he/him)
Marine Ecologist; Marine Ecology Team Lead
Bremerton
Marine and freshwater ecology, water quality, aquatic invasive species, volunteer training
jaws@uw.edu
360.229.9398



EMILY GRASON
(she/her)
Marine Ecologist
Seattle
Estuarine and marine ecology, aquatic invasive species, volunteer training
egrason@uw.edu
206.616.3368



AARON BARNETT
(he/him)
Boating Program Specialist
Port Townsend
Pollution prevention and vessel and marine facilities education
aaronb5@uw.edu
206.616.8929



JENNA KEETON
(she/her)
Fisheries Specialist
Seattle
Seafood marketing, sustainable fisheries management and economics, workforce development
keetonj@uw.edu
206.543.7009



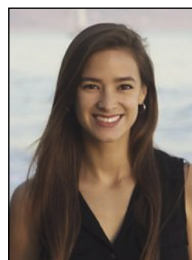
JACKSON BLALOCK
(he/him)
Community Engagement Specialist
South Bend
Community engagement, coastal hazards resilience, ecosystem-based management
jackbla@uw.edu
704.418.4179



TERI KING
(she/her)
Aquaculture and Marine Water Quality Specialist; Aquaculture and Water Quality Team Lead
Shelton
Technical assistance for aquaculture, seafood safety, water quality, harmful algal blooms, temperature extremes
guatemal@uw.edu
360.432.3054



MEG CHADSEY
(She/Her)
Ocean Acidification Specialist
Seattle
Ocean acidification, PMEL liaison
mchadsey@uw.edu
206.616.1538



MICHELLE LEPORI-BUI
(she/her)
Marine Water Quality Specialist
Seattle
Phytoplankton, harmful algal blooms, marine water quality
mdtlb@uw.edu
206.543.0820



KEVIN DECKER
(he/him)
Coastal Economist; Coastal Resilience Team Lead
Olympia
Regional economic development, coastal economies and resilience
kadecker@uw.edu
206.685.0864



IAN MILLER
(he/him)
Coastal Hazards Specialist
Port Angeles
Coastal geomorphology, oceanography, coastal hazards assessment and mitigation
immiller@uw.edu
360.417.6460



NICOLE NAAR
(she/her)
Social Science and Education Specialist
Seattle
Anthropology, aquaculture, ecosystem-based management; facilitation, K-12 curriculum
nanaar@uw.edu
206.543.7933



MELISSA POE
(she/her)
Social Scientist; Integrated Knowledge and Education Team Lead
Seattle
Community-based participatory action research, cultural-ecosystems, Indigenous and coastal food systems
mpoe@uw.edu
206.685.8209



ALEX STOTE
(she/her)
Crab Team Coastal Specialist
Seattle
Shellfish aquaculture, sustainable food systems, science communication
stote@uw.edu
206.685.8274



MAILE SULLIVAN
(she/her)
Education Specialist
Seattle
K-12 education and programming, Orca Bowl and NOAA Science Camp coordination
mailesul@uw.edu
206.543.2822



BRIDGET TROSIN
(she/her)
Coastal Policy Specialist; Fisheries and Boating Team Lead
Bellingham
Marine policy and planning, pollution prevention, marine facilities education, coastal hazards
bemmett@uw.edu
773.203.2922

COMMUNICATIONS



ASHLI BLOW
(she/her)
Communications Specialist
Seattle
ashlib@uw.edu
206.221.6134



SAMANTHA LARSON
(she/her)
Science Writer
Seattle
larsonsa@uw.edu
206.616.9568



ROBYN RICKS
(she/her)
Creative Director
Seattle
robyn@uw.edu
206.685.2607



MARYANN WAGNER
(she/her)
Assistant Director for Communications
Seattle
maryannb@uw.edu
206.616.6353

ADMINISTRATION, RESEARCH, AND FELLOWSHIPS



ANDREA CHATEAUBRIAND
(she/her)
Executive Assistant
Seattle
chateau@uw.edu
206.616.1427



KAY MORRILL-MCCLURE
(they/them)
DEIJA and IT Lead
Seattle
kayjmmc@uw.edu
206.685.0171



KATY CURTIS
(she/her)
Assistant Director for Finance and Administration
Seattle
katy123@uw.edu
206.543.9966



DEBORAH PURCE
(she/her)
Fellowship and Research Specialist
Seattle
dpurce@uw.edu
206.616.5718



TRACEY FUGAMI
(she/they)
Human Resources Manager
Seattle
fugami@uw.edu
206.616.8192



EILEEN PUTMAN
(she/her)
Administrative Assistant
Seattle
emherman@uw.edu
206.543.6600



KATE LITTLE
(she/her)
Deputy Director
Seattle
kalittle@uw.edu
206.616.0151



TRINH VO
(she/her)
Grants Manager
Seattle
trinh26@uw.edu
206.685.2427

