

# Pick the Dungeness crab (MEMA)

A.

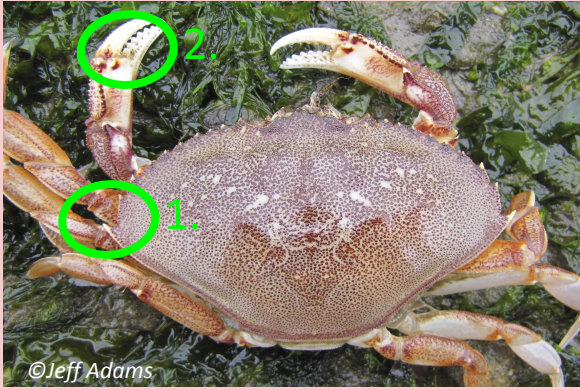


B.



## Dungeness crab (MEMA)

A.

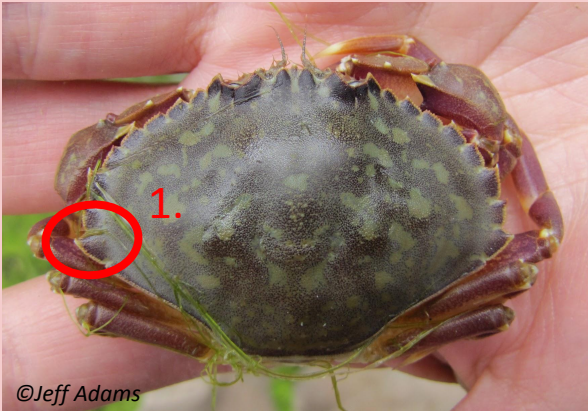


A few features in this photo distinguish the Dungeness crab (MEMA) from the graceful crab (MEGR).

1. The Dungeness crab is widest at its 10th marginal tooth. The graceful crab is widest at its 9th tooth and the 10th appears as a small, often white, notch.
2. Dungeness crab have serrations on the outside of their dactyl (top of the claw) while graceful crab do not.

## Graceful crab (MEGR)

B.





# Pick the Dungeness crab (MEMA)

---

A.



© Greg Jensen

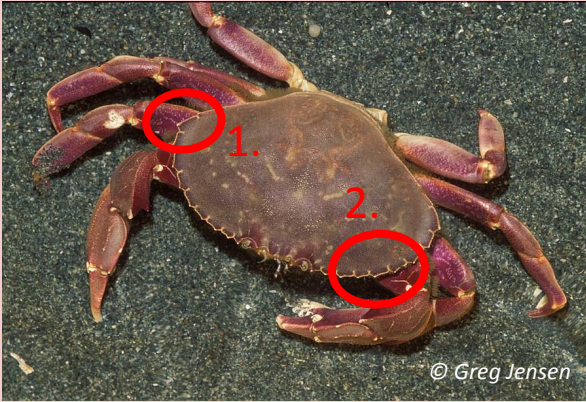
B.



© Wendy Feltham

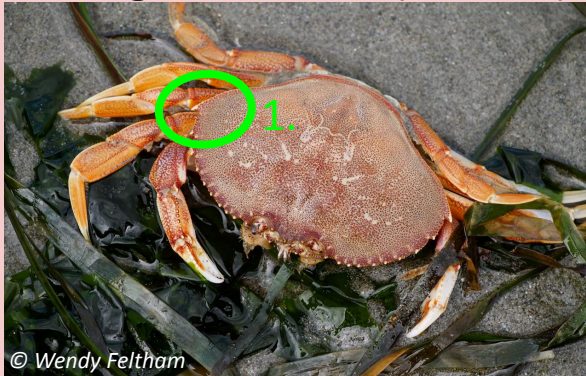
## Graceful crab (MEGR)

A.



## Dungeness crab (MEMA)

B.



## Correct Answer: B



A few features in this photo distinguish the Dungeness crab (MEMA) from the graceful crab (MEGR).

1. The Dungeness crab is widest at its 10th marginal tooth. The graceful crab is widest at its 9th tooth and the 10th appears as a small, often white, notch.
2. The graceful crab typically has a white outline around its carapace while the Dungeness crab often has only white tipped marginal teeth.



**\*\*Note:** Maximum carapace width of the graceful crab is 115 mm while the maximum carapace width of Dungeness crab is 230 mm.



# Pick the Dungeness crab (MEMA)

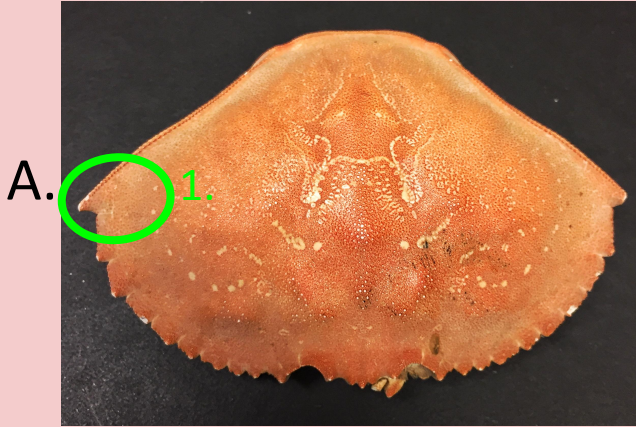
A.



B.



## Dungeness crab (MEMA)



## Correct Answer: A

A couple features in this photo distinguish the Dungeness crab (MEMA) from the graceful crab (MEGR).

1. The Dungeness crab is widest at its 10th marginal tooth. The graceful crab is widest at its 9th tooth and the 10th appears as a small notch.
2. The Dungeness crab's marginal teeth are also more pronounced/pointier than the more rounded marginal teeth of the graceful crab.

## Graceful crab (MEGR)





# Pick the Dungeness crab (MEMA)

A.



B.



## Graceful crab (MEGR)

A.



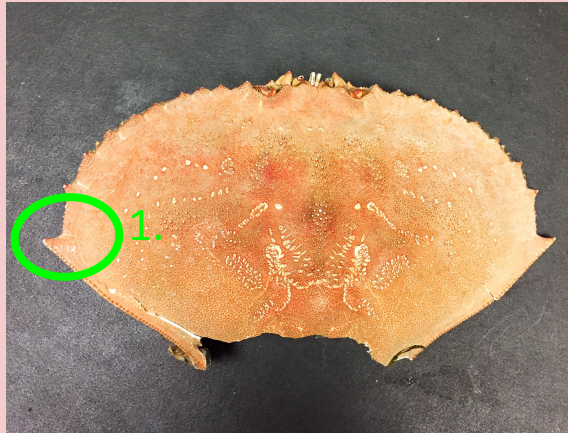
## Correct Answer: B

A couple features in this photo distinguish the Dungeness crab (MEMA) from the graceful crab (MEGR).

1. The Dungeness crab is widest at its 10th marginal tooth. The graceful crab is widest at its 9th tooth and the 10th appears only as a small notch.
2. The Dungeness crab's marginal teeth are also more pronounced/pointier overall than the more rounded marginal teeth of the graceful crab.

## Dungeness crab (MEMA)

B.





# Pick the Dungeness crab (MEMA) claw

---

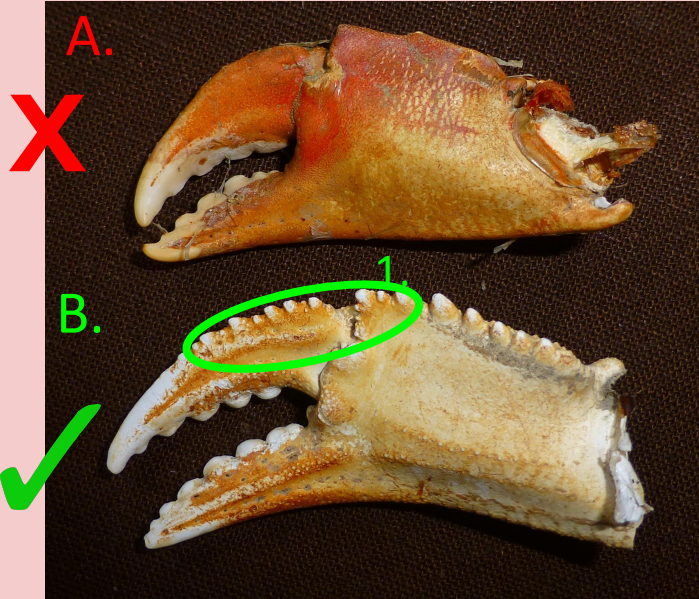
A.



B.



## Correct Answer: B



One main feature distinguishes the claws of the Dungeness crab (MEMA) from the claws of the graceful crab (MEGR):

1. The dactyl (top of the claw) is serrated on the outside of a Dungeness claw, whereas the graceful crab claw has no serrations.

\*\*Remember you don't have to identify a crab or molt from a claw only, this photo is just to help you focus on the distinction.



# Pick the Dungeness crab (MEMA)

A.

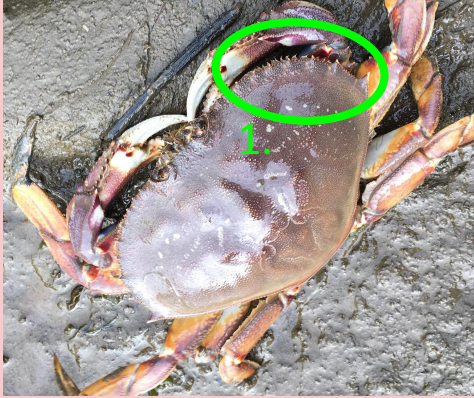


B.



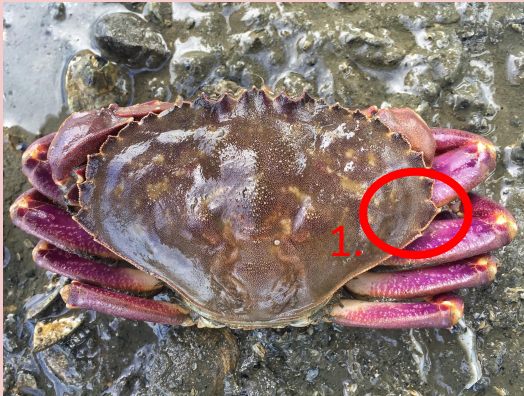
## Dungeness crab (MEMA)

A.



## Graceful crab (MEGR)

B.



## Correct Answer: A

One major feature can help distinguish the Dungeness crab (MEMA) from the graceful crab (MEGR):

1. The Dungeness crab is widest at its 10th marginal spine, while the graceful crab is widest at the 9th. Also note the difference in the shape of the marginal spines between the two species.



# Pick the Dungeness crab (MEMA)

A.

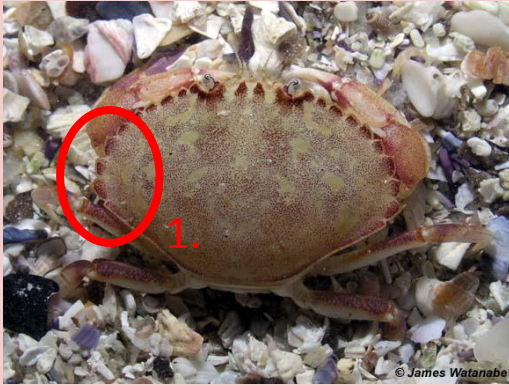


B.



## Graceful crab (MEGR)

A.



## Correct Answer: B

---

One major feature can help distinguish the Dungeness crab (MEMA) from the graceful crab (MEGR):

1. The Dungeness crab is widest at its 10th marginal spine, while the graceful crab is widest at the 9th. Also note the difference in the shape of the marginal spines between the two species.

## Dungeness crab (MEMA)

B.

