

Pick the red rock crab (CAPR)

A.



© Jeff Adams

B.

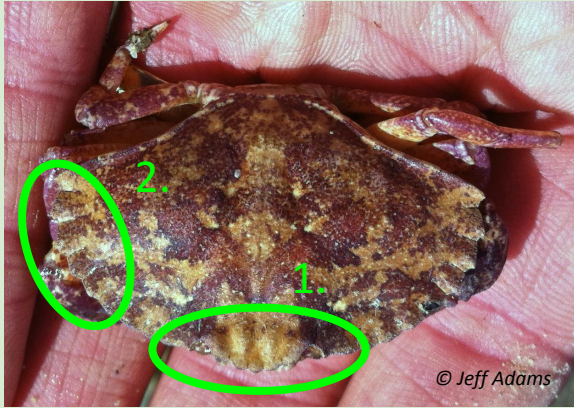


© Wendy Feltham

Red rock crab (CAPR)

Correct Answer: A

A.



A few features distinguish the red rock crab (CAPR) from the pygmy rock crab (GLOR):

1. The red rock crab has a rostrum that protrudes beyond the eyes and rest of its carapace.
2. The red rock crab's marginal teeth are larger/wider than the pygmy rock crab's smaller/narrower/pointier marginal teeth.
3. The carapace of the red rock crab is shaped like a fan while the carapace of the pygmy rock crab is more circular.

Pygmy rock crab (GLOR)

B.



Pick the red rock crab (CAPR)

A.



B.

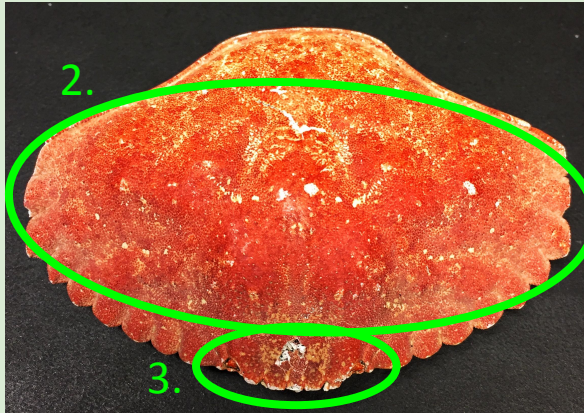


Black-clawed crab (LOBE)



X

Red rock crab (CAPR)



✓

Correct Answer: B

A few features distinguish the red rock crab (CAPR) from the black-clawed crab (LOBE):

1. The marginal teeth of the black-clawed crab are far less defined than those of the red rock crab.
2. The red rock crab's carapace is wide and fan-shaped compared to the pentagon shape of the black-clawed crab.
3. The rostrum of the red rock crab protrudes beyond the eyes more than that of the black-clawed crab.

Pick the red rock crab (CAPR)

A.

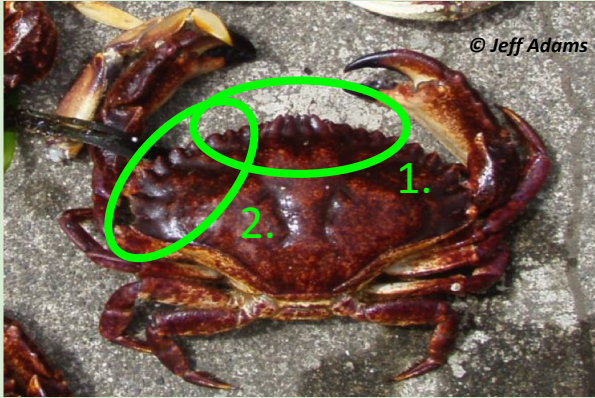


B.



Red rock crab (CAPR)

A.



A few features distinguish the red rock crab (CAPR) from the pygmy rock crab (GLOR):

1. The red rock crab has a rostrum that protrudes beyond the eyes and rest of its carapace.
2. The red rock crab's marginal teeth are larger/wider than the pygmy rock crab's smaller/narrower/pointier marginal teeth.
3. The carapace of the red rock crab is shaped like a fan while the carapace of the pygmy rock crab is more circular.

Pygmy rock crab (GLOR)

B.



*Note: max width of red rock crab is 200mm while max width of pygmy rock crab is 53mm.

Pick the red rock crab (CAPR)

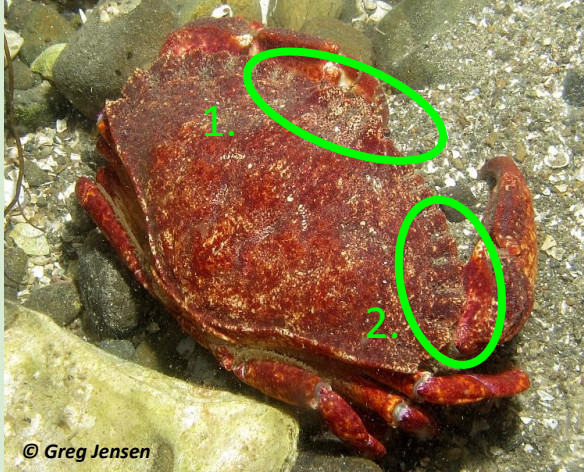
A.



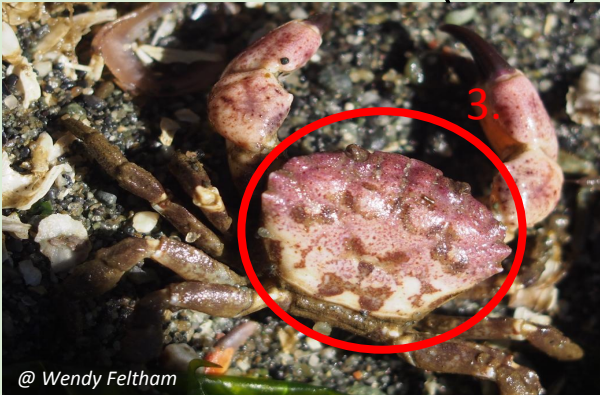
B.



Red rock crab (CAPR)



Black-clawed crab (LOBE)



Correct Answer: A

A few features distinguish the red rock crab (CAPR) from the black-clawed crab (LOBE):

1. The red rock crab has a rostrum that protrudes beyond the eyes and the rest of its carapace.
2. The red rock crab's marginal teeth are larger and more defined than those of the black-clawed crab.
3. The carapace of the red rock crab is shaped like a fan while the carapace of the black-clawed crab is a pentagon.

*Note: max width of red rock crab is 200mm while max width of the black-clawed crab is 40mm.