

Pick the graceful crab (MEGR)

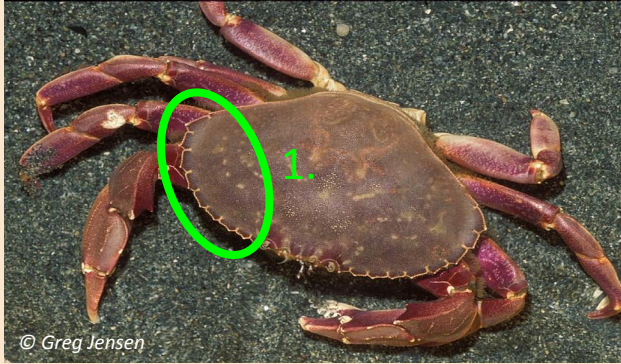
A.



B.



Graceful crab (MEGR)



Red rock crab (CAPR)



Correct Answer: A



Two features in this photo distinguish the graceful crab (MEGR) from the red rock crab (CAPR).

1. Graceful crab often have a “white outline” on their carapace while red rock crab do not.
2. Red rock crab have a more pronounced rostrum, protruding forward and slightly up from the eyes, whereas the rostrum of a graceful crab is in line with the rest of its carapace.



*Note: if claws present, red rock crab also has black tips while graceful crab does not.

Pick the Dungeness crab (MEMA)

A.

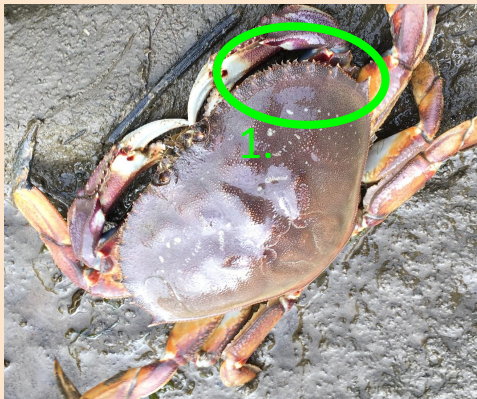


B.



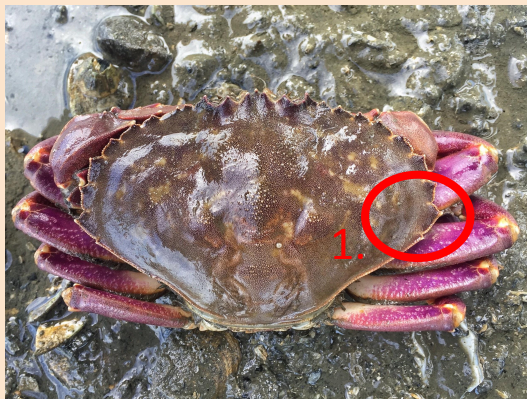
Dungeness crab (MEMA)

A.



Graceful crab (MEGR)

B.



Correct Answer: A

One major feature can help distinguish the Dungeness crab (MEMA) from the graceful crab (MEGR):

1. The Dungeness crab is widest at its 10th marginal spine, while the graceful crab is widest at the 9th. Also note the difference in the shape of the marginal spines between the two species.

Pick the graceful crab (MEGR)

A.



B.



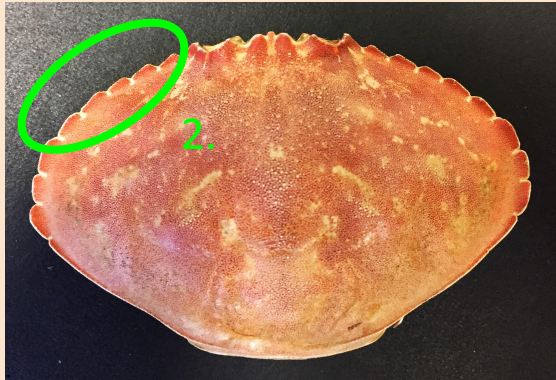
Dungeness crab (MEMA)

A.



Graceful crab (MEGR)

B.



Correct Answer: B

Two in this photo distinguish the graceful crab (MEGR) from the Dungeness crab (MEMA).

1. Dungeness marginal teeth come to a fine point, with the 10th marginal tooth being particularly pronounced and the widest point.
2. Graceful crab marginal teeth are less pointed and widest at the 9th marginal tooth. The 10th tooth appears only as a white notch just behind the widest point. Also note the white outline on the graceful crab carapace.

Pick the Dungeness crab (MEMA)

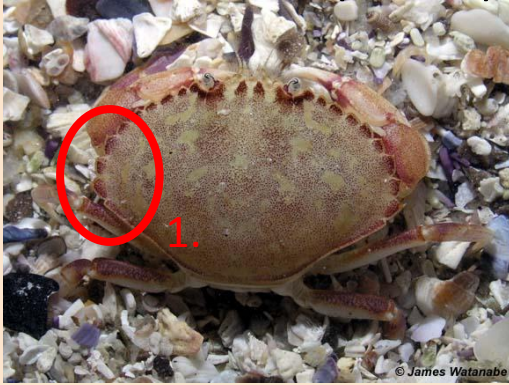
A.



B.



Graceful crab (MEGR)



A.



Dungeness crab (MEMA)



B.



Correct Answer: B

One major feature can help distinguish the Dungeness crab (MEMA) from the graceful crab (MEGR):

1. The Dungeness crab is widest at its 10th marginal spine, while the graceful crab is widest at the 9th. Also note the difference in the shape of the marginal spines between the two species.

Pick the graceful crab (MEGR)

A.

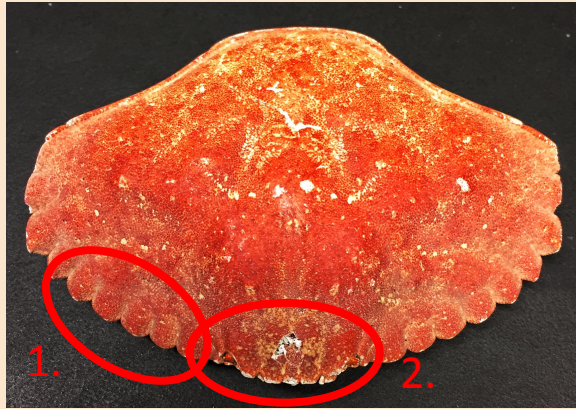


B.



Red rock crab (CAPR)

A.



X

Graceful crab (MEGR)

B.



✓

Correct Answer: B

A few features in this photo distinguish the graceful crab (MEGR) from the red rock crab (CAPR)

1. The marginal teeth of the red rock crab appear more “scalped” or are more distinct from each other than the marginal teeth of the graceful crab.
2. The rostrum of the red rock crab protrudes more up and in front of the eyes relative to the rest of its carapace relative to that of the graceful crab.
3. The marginal teeth of the graceful crab are less distinct from each other, and the carapace has a white outline.

**Note that occasionally you might see a notch on the red rock crab shell similar to the 10th tooth in the graceful crab. If present, use tooth shape and claws to distinguish.

Pick the Dungeness crab (MEMA)

A.

B.



Red rock crab (CAPR)

A.



Correct Answer: B

Two features in this photo distinguish the red rock crab (CAPR) from the Dungeness crab (MEMA).

1. The red rock crab has a distinct, protruding rostrum while the Dungeness crab does not.
2. The shape of the marginal spines are different - on the red rock crab they are smoother and “scalloped” while the Dungeness crab’s marginal spines are more pointed. However, both crabs are widest at their 10th marginal spine.

Dungeness crab (MEMA)

B.



*Note: if claws present, red rock crab also has black tips while Dungeness crab does not.

Pick the graceful crab (MEGR)

A.

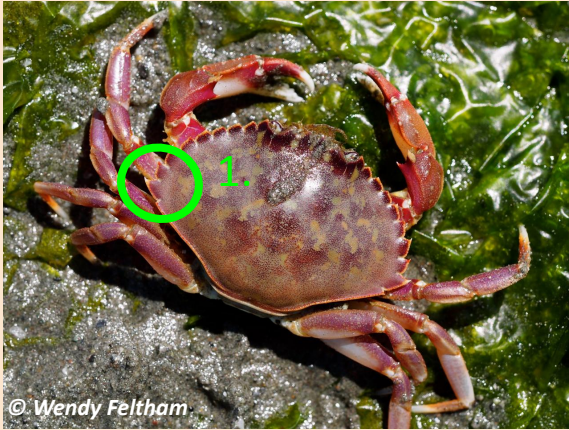


B.



Graceful crab (MEGR)

A.



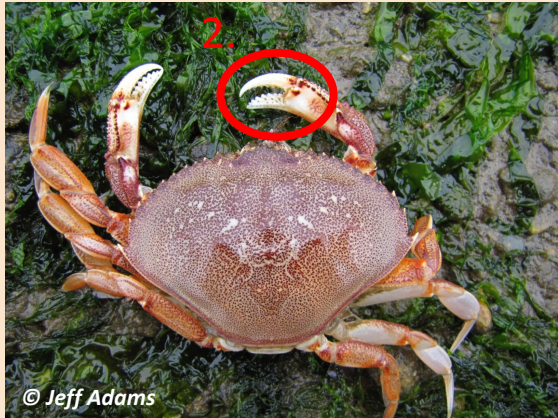
Correct Answer: A

Two features in this photo distinguish the graceful crab (MEGR) from the Dungeness crab (MEMA).

1. Though the marginal teeth of this graceful crab are more pointed like those of the Dungeness, note that this graceful crab is still widest at its 9th marginal tooth, while the Dungeness is widest at its 10th marginal tooth.
2. The Dungeness crab also has serrations on the outside of its claw, while the graceful crab does not.

Dungeness crab (MEMA)

B.



Pick the Dungeness crab (MEMA)

A.



© Kelly Martin

B.



Dungeness crab (MEMA)

A.



Two features in this photo distinguish the red rock crab (CAPR) from the Dungeness crab (MEMA).

1. The red rock crab has a distinct, protruding rostrum while the Dungeness crab does not.
2. The shape of the marginal spines are different - on the red rock crab they are smoother and “scalloped” while the Dungeness crab’s marginal spines are more pointed. However, both crabs are widest at their 10th marginal spine.

Red rock crab (CAPR)

B.



*Note: if claws present, red rock crab also has black tips while Dungeness crab does not.

Pick the graceful crab (MEGR)

A.

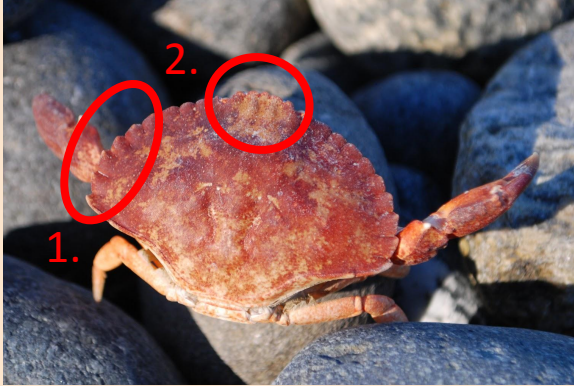


B.



Red rock crab (CAPR)

A.



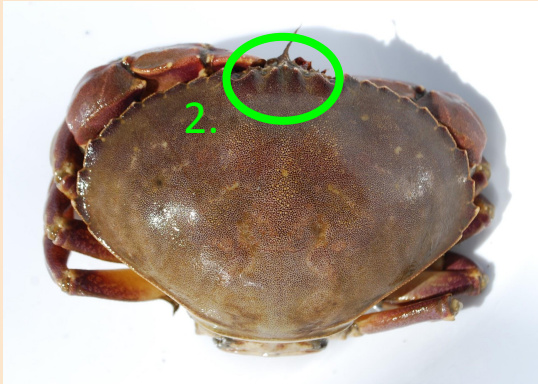
Correct Answer: B

A few features in this photo distinguish the graceful crab (MEGR) from the red rock crab (CAPR).

1. The marginal teeth of the red rock crab appear more “scalped” or are more distinct from each other than the marginal teeth of the graceful crab. The marginal teeth of the graceful crab are less distinct from each other, and the carapace has a white outline.
2. The rostrum of the red rock crab protrudes more up and in front of the eyes relative to the rest of its carapace relative to that of the graceful crab.

Graceful crab (MEMA)

B.



**Note that occasionally you might see a notch on the red rock crab shell similar to the 10th tooth in the graceful crab. If present, use tooth shape and claws (red rock crab has black-tipped claws) to distinguish.