

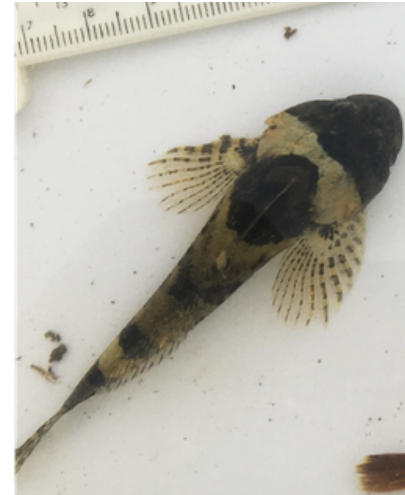
**LEAR**

**COAS**

**ARFE**

**OLMA**

**Head  
Shape**



Long head  
Wide mouth

Short wide head

Short wide head

Pinched nose

**Pectoral  
Fins**



Elongate, lobe-shaped  
Wide concentric black bands

Circular shape  
Stippled pattern

Oblong  
Alternating light/dark

Triangular, delicate  
Variable color

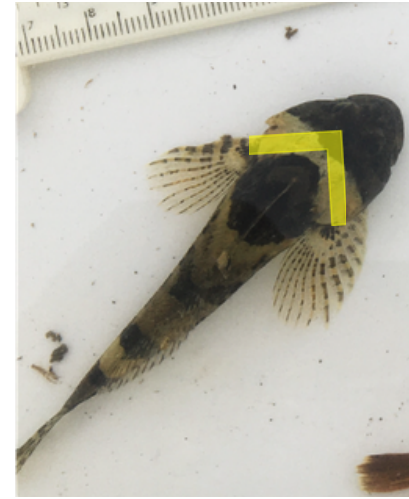
**LEAR**

**COAS**

**ARFE**

**OLMA**

**Saddle Patches (White)**



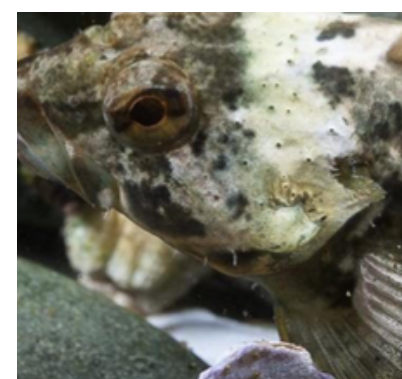
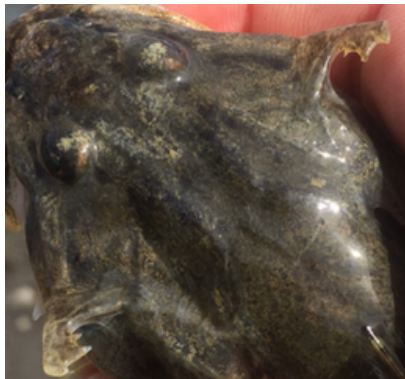
Uncommon, more like "splotches"  
Variable location, white patches

Back of head: variable  
- rare, low contrast, narrow, points toward tail

Back of head (if present): points to head, high contrast  
Behind operculum: fainter, variable  
Tail: higher contrast

Behind operculum: always present, high contrast, sharp edge, points toward tail  
Tail: high contrast

**Opercular Spines**



Long, (especially in large individuals)  
Multipronged

"Simple", single  
Blunt  
Edge of operculum

Bifid  
In front of operculum

Bifid