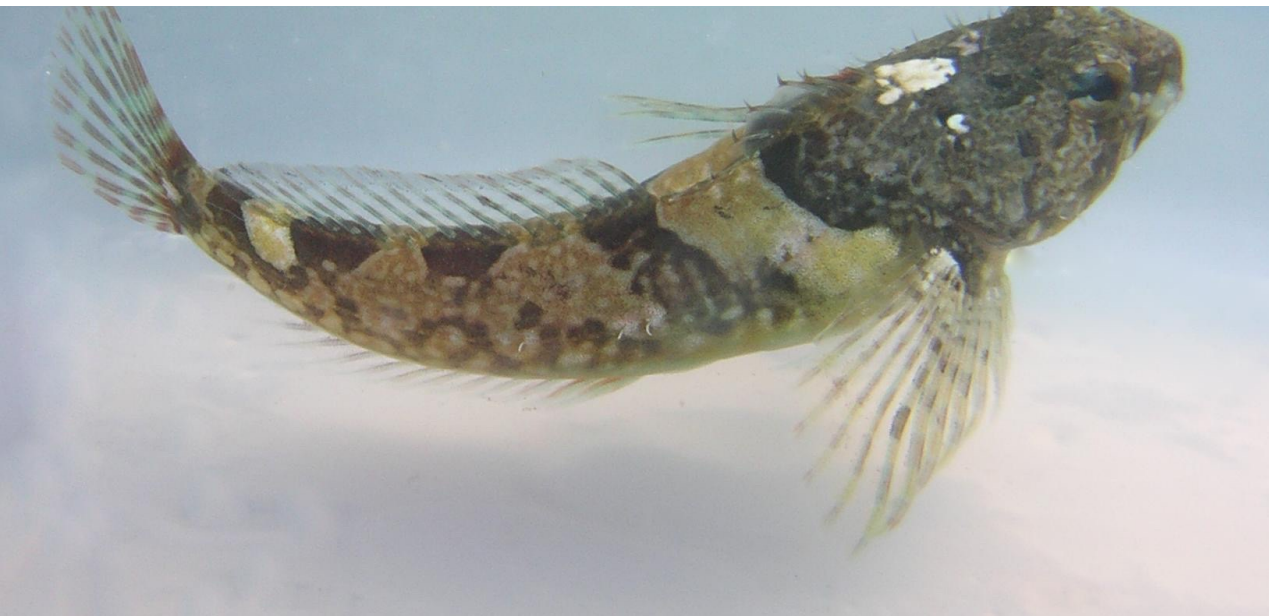


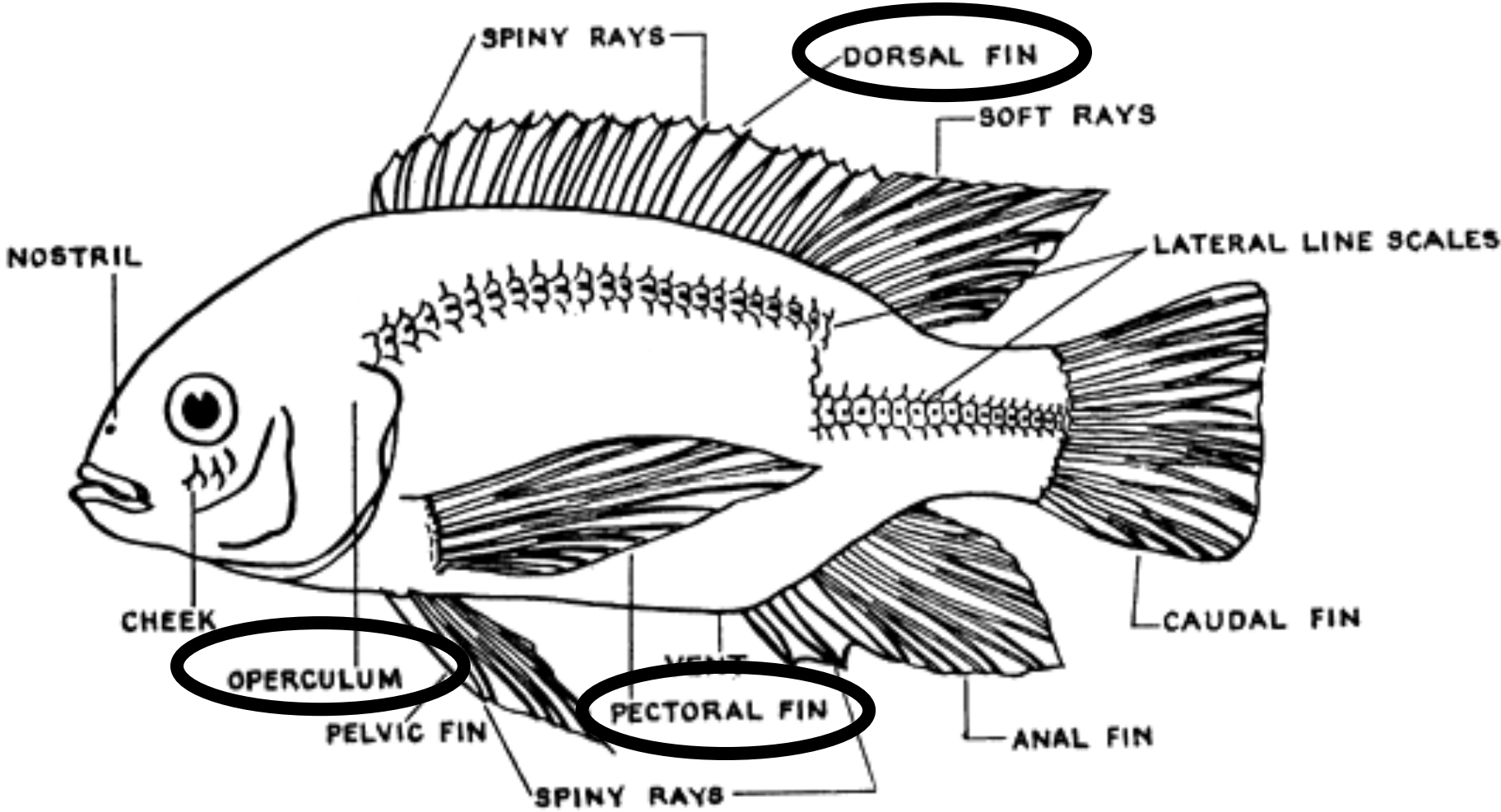


# *Sculpin Stampede*



# Fish identification

---



# Staghorn Sculpin

*Leptocottus armatus*

**LEAR**

- Flattened body; large head
- Large “antler-like” spines in front of gill covers
- Large lobe-shaped pectoral fins with concentric black bands
- Up to 460 mm (~18”)

- Long blunt “bull” head
- Lobe pectorals w/ stripes
- Multi-pronged opercular spines



# Staghorn Sculpin

*Leptocottus armatus*

**LEAR**

- Long blunt “bull” head
- Lobe pectorals w/ stripes
- Multi-pronged opercular spines

**No scales on body**



**Upper preopercular spine shaped like an antler**

**Pectoral fin with dark bars**

# Staghorn Sculpin

*Leptocottus armatus*

**LEAR**

- Long blunt “bull” head
- Lobe pectorals w/ stripes
- Multi-pronged opercular spines



# Prickly sculpin

*Cottus asper*

**COAS**

- Short fat head
- Simple short opercular spines
- Circular pectoral fins with stippled rays

- Similar large, rounded head and flattened body as LEAR
- Short unbranched spines on gill covers
- Circular pectoral fins with sturdy, stippled rays. Often holds dorsal fin erect
- Up to 300mm (~12")



Tall dorsal fin

# Prickly sculpin

*Cottus asper*  
**COAS**

- Short fat head
- Simple short opercular spines
- Circular pectoral fins with stippled rays



# Prickly sculpin

*Cottus asper*  
**COAS**

- Short fat head
- Simple short opercular spines
- Circular pectoral fins with stippled rays





# Tidepool sculpin

*Oligocottus maculosus*

**OLMA**

- Pointy snout
- Delicate, triangular pectorals
- Clear white saddle patches (2)

- Large head with long slender body
- 2 white saddle patches
  - Behind operculum
  - In front of tail
- Small forked spine on gill cover
- Up to 90mm



# Tidepool sculpin

*Oligocottus maculosus*

**OLMA**

- Pointy snout
- Delicate, triangular pectorals
- Clear white saddle patches (2)



# Padded sculpin

*Artedius fenestralis*

**ARFE**

- Stippled ventral side
- Rough scales on dorsal surface
- White saddles

- Short, blunt head, oblong pectorals
- Variable white saddles
  - Back of head (variable), high contrast
  - Behind pectorals (not as much contrast)
  - In front of tail (high contrast)
- Textured/rough scales on dorsal surface
- Ventral surface stippled/spotted



# Padded sculpin

*Artedius fenestralis*

**ARFE**

- Stippled ventral side
- Rough scales on dorsal surface
- White saddles



# Padded sculpin

*Artedius fenestralis*

**ARFE**



- Stippled ventral side
- Rough scales on dorsal surface
- White saddles



# Head Shape

- Long head, wide mouth
- Short wide head



**LEAR  
ARFE**



**COAS  
OLMA**



- Short wide head
- Pinched nose

# Pectoral Fins

- Elongate, Lobe-shaped
- Wide concentric black bands



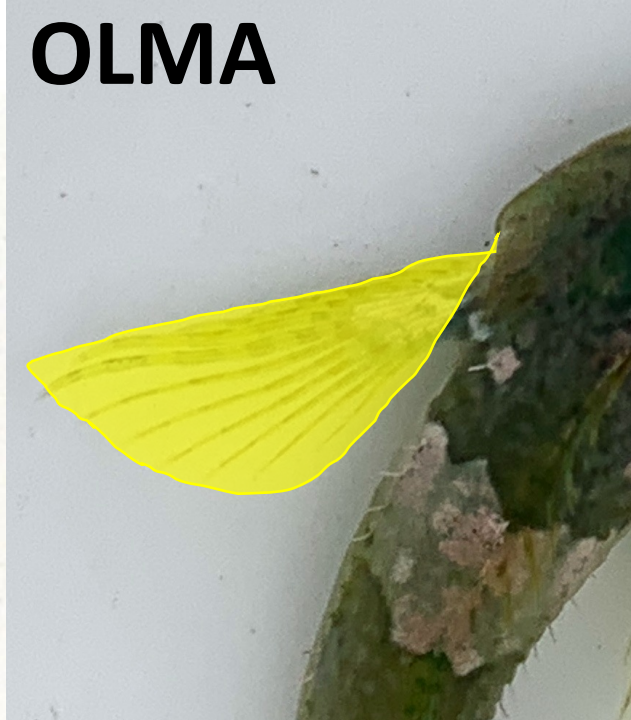
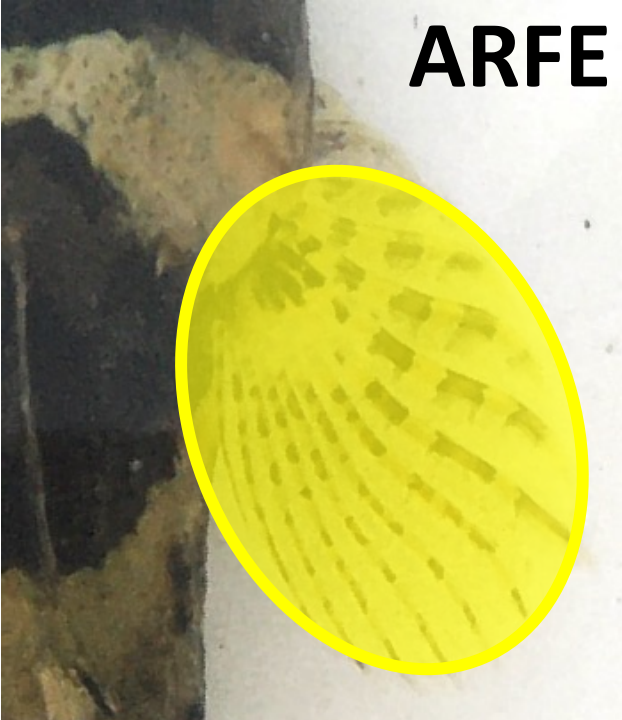
**LEAR  
ARFE**



**COAS  
OLMA**

- Circular shape
- Stippled pattern

- Oblong
- Alternating light/dark



- Triangular, *delicate*
- Variable color

# Opercular Spines

- Long (especially in large individuals)
- Multipronged

- Bifid
- In front of operculum



LEAR



COAS



ARFE



OLMA

- “Simple”, single
- Blunt
- Edge of operculum

- Bifid



# Saddle Patches (white)

- Uncommon, more like “splotches”
- Variable location, white patches

- Back of head (if present): points to head, high contrast
- Behind operculum: fainter, variable
- Tail: higher contrast



- Back of head: variable – rare, low contrast, narrow, points toward tail

- Behind operculum: always present, high contrast, sharp edge, points toward tail
- Tail: high contrast