



CRAB TEAM COMMON SNAIL ID GUIDE

Japanese false cerith - BAAT

Batillaria attramentaria

- Long conical shell up to 45mm, but most individuals **20-30mm**
- Circular operculum and aperture
- Color dark brown with fine bands, wider bands sometimes apparent
- Where present, often found at very high densities
- Very small individuals often found, distinguished from ALCA, NASS by a more triangular profile



Nassa snails - NASS

Multiple species from the genus *Nassarius*

- Shell oval, football-shaped up to **22mm**
- Vertical ribs on shell, and whorls/sutures more distinct than BAAT
- Operculum and aperture oval



Wrinkled Amphissa - AMCO

Amphissa columbiana

- Football shaped up to **30mm**
- Sculpted with vertical ridges, sutures less distinct than NASS
- Aperture and operculum elongated oval
- Color tan to russet brown, can be striped



Carinate dove snail - ALCA

Alia carinata

- Football shaped up to **11mm**
- Smooth shell with indistinct sutures, no vertical ridges
- Elongate aperture, "keeled" body whorl, aperture may out slightly in a ridge
- Color yellow-brown to dark brown



Eastern Dogwhelk - ILOB

Ilyanassa obsoleta

- Football-shaped to **30mm**
- Rounded spire, with shallow sutures
- Operculum and aperture oval
- Shell black and finely beaded when young, but appears gray and smooth when worn/aged



Bubble shells - BUBB

Species in the genus *Haloa* and *Haminoea*

- Extremely reduced shell, partially covered by mantle/body
- When extended, may be up to **33mm** long, shell up to **10mm**
- Contract into "blobs" when out of water or disturbed

Smooth thin shell





CRAB TEAM COMMON SNAIL ID GUIDE

Frilled dogwinkle - NULA

Nucella lamellosa

- Football shaped shell up to **125mm**
- Shell sculpture varies from smooth to frilled, with varices/leafy extensions
- Aperture and operculum “D” shaped
- Shell colors include orange, white browns, purples and stripes
- Other *Nucella* less commonly encountered, but may have clear spiral ridges (*N. canaliculata*) or more rotund shape (*N. ostrina*)



Japanese oyster drill - OCIN

Ocenebrellus inornatus

- Large thick shell up to **50mm**
- Whorls with right-angled “shoulder” appearance, varices/frills sometimes apparent
- Aperture with thick lip and operculum “D” shaped
- Color sandy to russet brown, occasionally with stripes



Checkered periwinkle - LISC

Littorina scutulata

- Rotund shell up to **19mm**. Spire more pointed and elongated than LISI
- Operculum and aperture circular
- Color black or dark with checkered pattern
- Common intertidally, especially on medium energy beaches



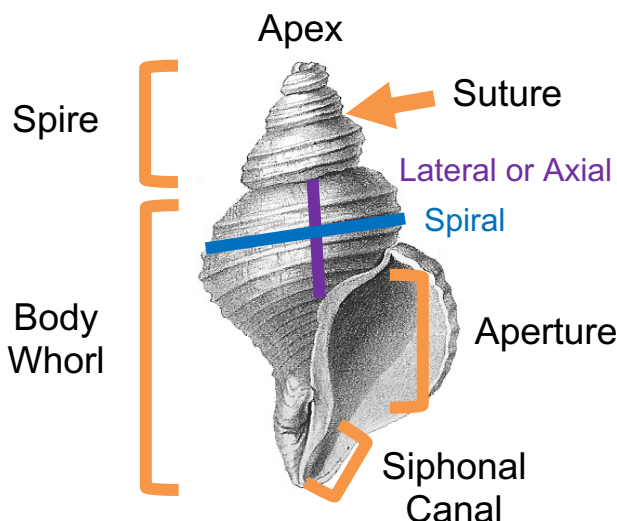
Sitka periwinkle - LISI

Littorina sitkana

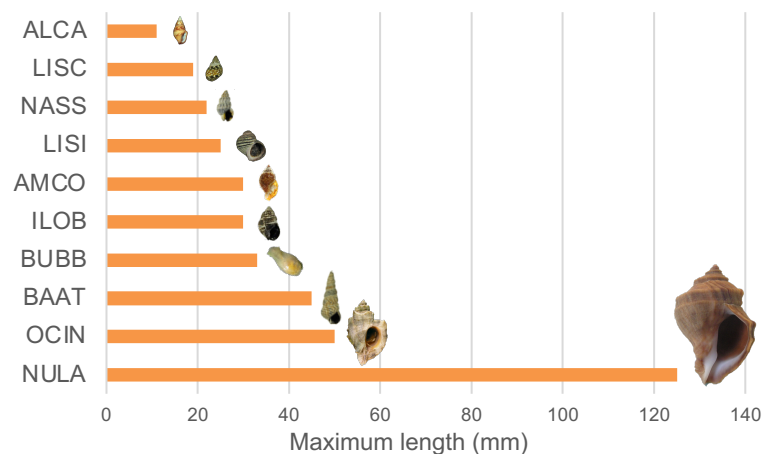
- Shell very rotund up to **25mm**. Very reduced spire compared to LISC
- Spiral grooves may or may not be apparent
- Operculum and aperture circular
- Color variable with with or without stripes of variable width



Parts of a Shell



How Big?



Photos: OCIN: E. Grason; NULA (Smooth): Jan Delsing, Wikimedia Commons; BUBB shell: Dave Cowles. All others: Linda Schroeder – Pacific Northwest Shell Club